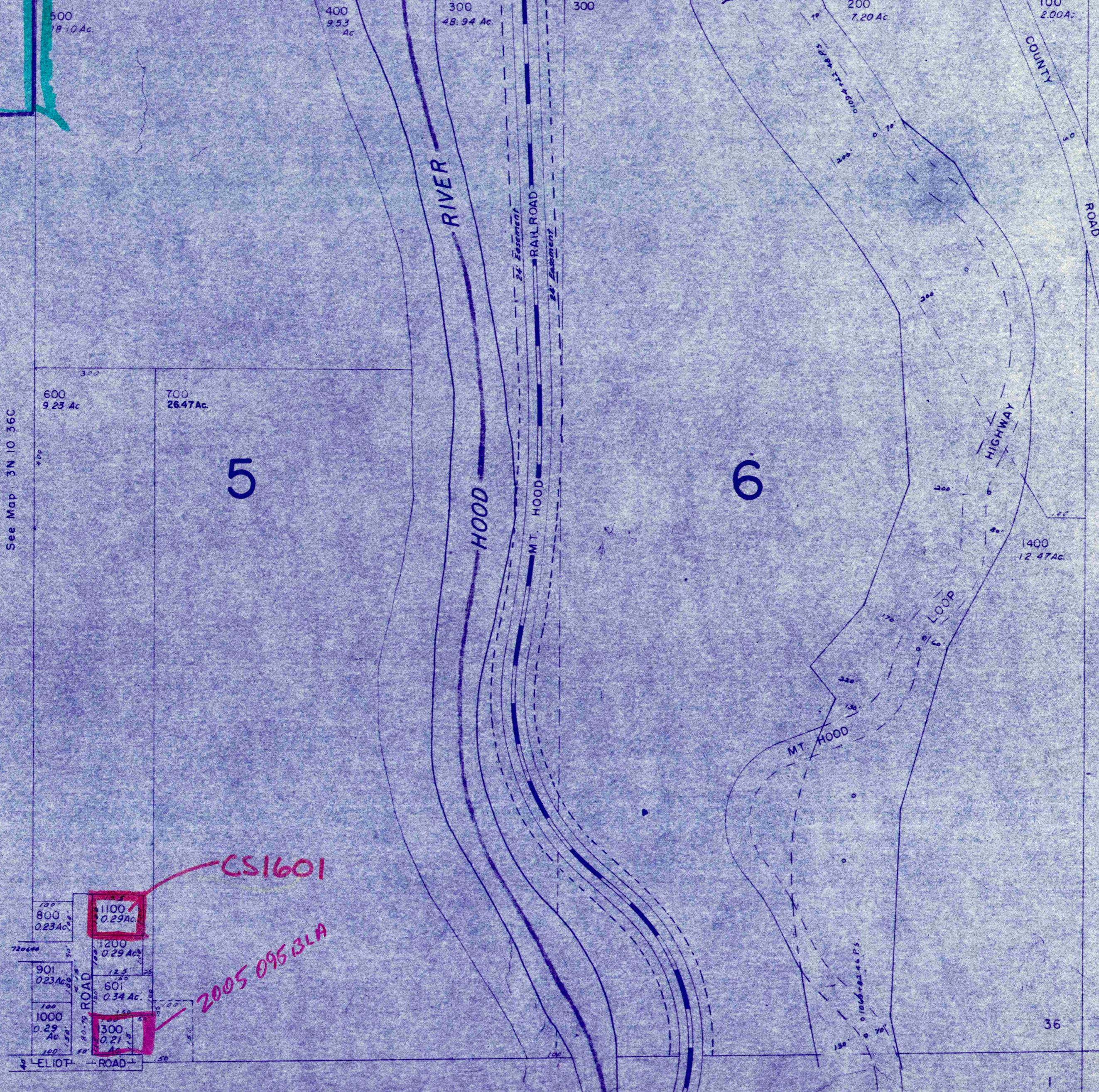
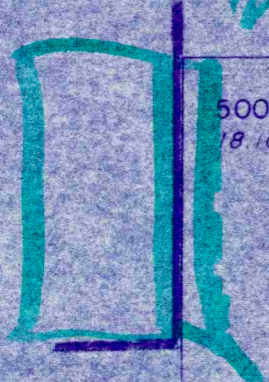


2008 045 BLA



See Map 3N 10 36C

See Map 3N 10 36A

See Map 3N 10 31

See Map 2N 10 1

5

6

36 31
1 6

CS1601

2005 0953LA

100 800 0.23 Ac	1100 0.29 Ac
901 0.23 Ac	1200 0.29 Ac
100 1000 0.29 Ac	601 0.34 Ac
100	300 0.21 Ac