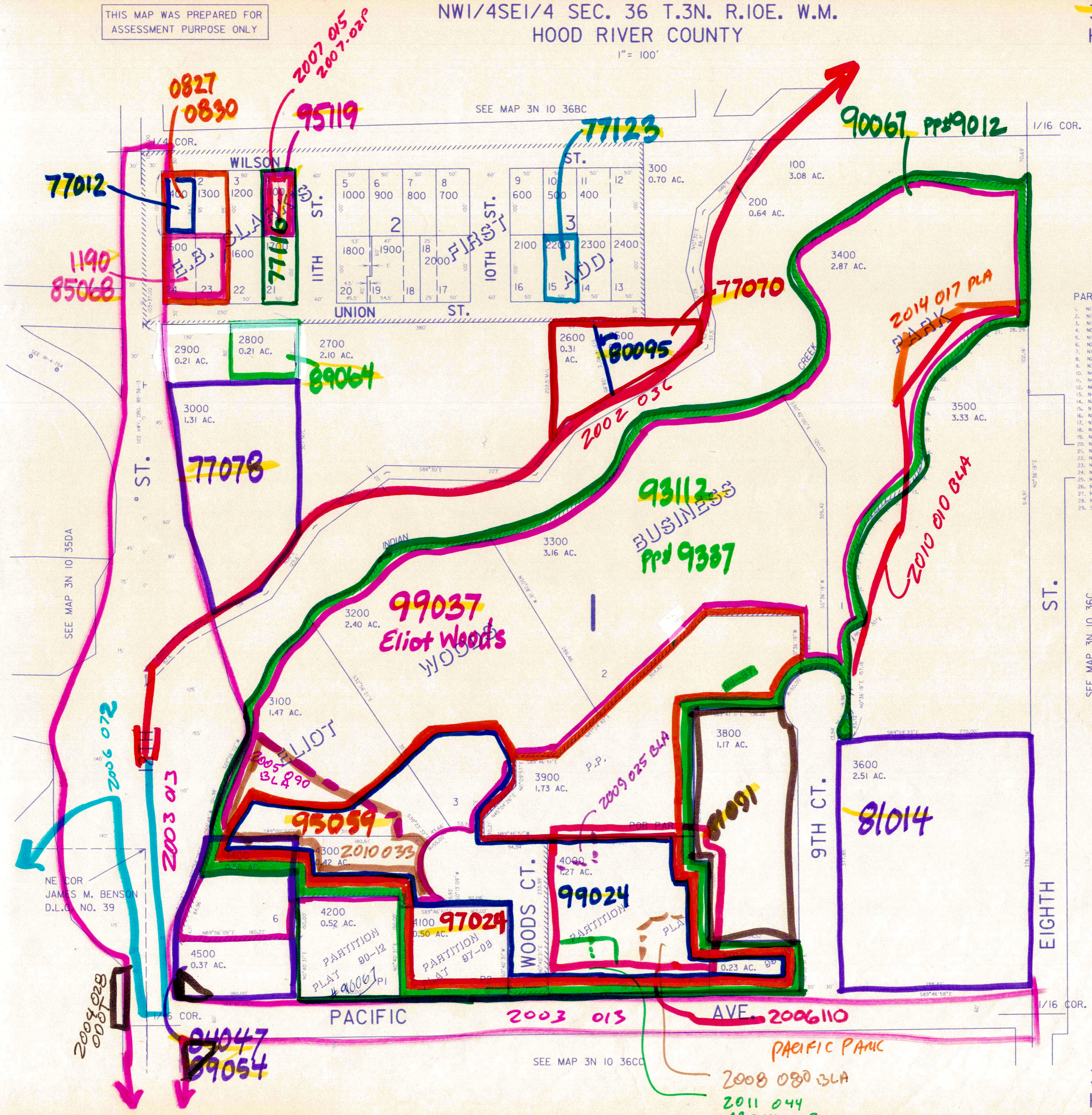


THIS MAP WAS PREPARED FOR
ASSESSMENT PURPOSE ONLY

NW1/4SE1/4 SEC. 36 T.3N. R.10E. W.M.
HOOD RIVER COUNTY

3N 10 36CB
HOOD RIVER

1" = 100'



PARCEL 3400

1.	N13°35'21"W	37.56'
2.	N19°15'21"W	22.38'
3.	N11°04'59"W	17.89'
4.	N0°11'06"W	13.03'
5.	N15°24'35"E	15.26'
6.	N26°18'15"E	14.76'
7.	N19°59'34"E	16.55'
8.	N0°4'00'23"E	16.05'
9.	N39°00'28"E	14.97'
10.	N46°36'13"E	14.38'
11.	N44°27'20"E	18.10'
12.	N61°56'07"E	28.39'
13.	N45°58'16"E	26.84'
14.	N24°26'32"E	17.31'
15.	N12°06'17"E	17.40'
16.	N0°42'22"W	16.83'
17.	N7°27'24"W	18.47'
18.	N2°58'35"E	18.30'
19.	N8°27'33"E	28.63'
20.	N16°41'34"E	22.34'
21.	N32°50'28"E	20.47'
22.	N45°14'24"E	19.51'
23.	N45°16'04"E	28.76'
24.	N39°48'00"E	29.30'
25.	N50°12'22"E	13.94'
26.	N6°23'21"E	26.09'
27.	N84°51'09"E	21.20'
28.	N86°48'34"E	22.76'
29.	S84°42'29"E	10.79'

Revised
4/30/01, JD
7-18-01
3N 10 36CB
HOOD RIVER