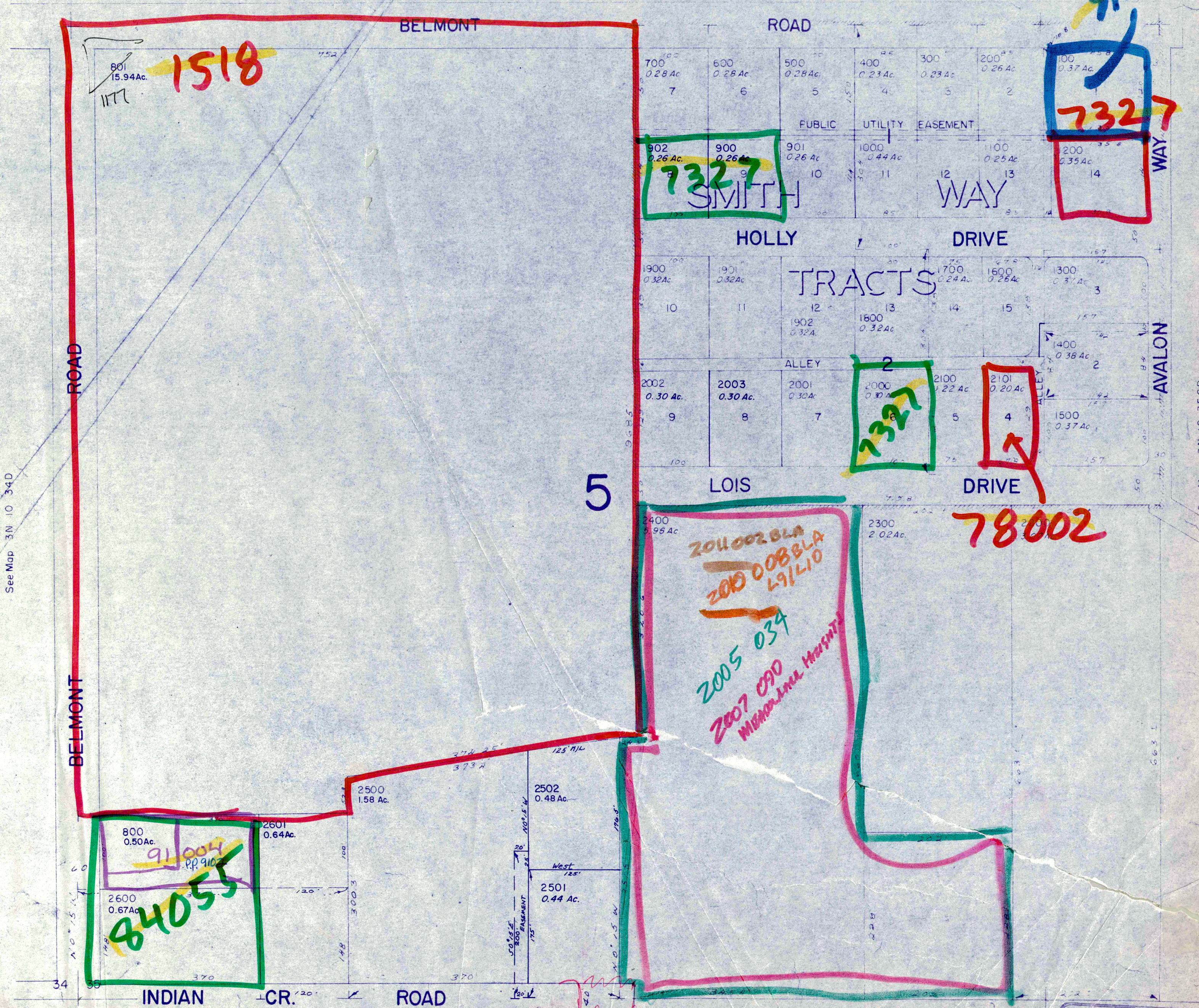


JLH Plat  
of SW1/4  
0797

Raymond Plat  
0799

CANCELLED NO'S  
802

See Map 3N 10 35CB



See Map 3N 10 34D

See Map 3N 10 35CD

See Map 2N 10 2

RECEIVED  
MAR 8 1981  
DEPT. OF REVENUE STATE OF OREGON  
3N 10 35CC