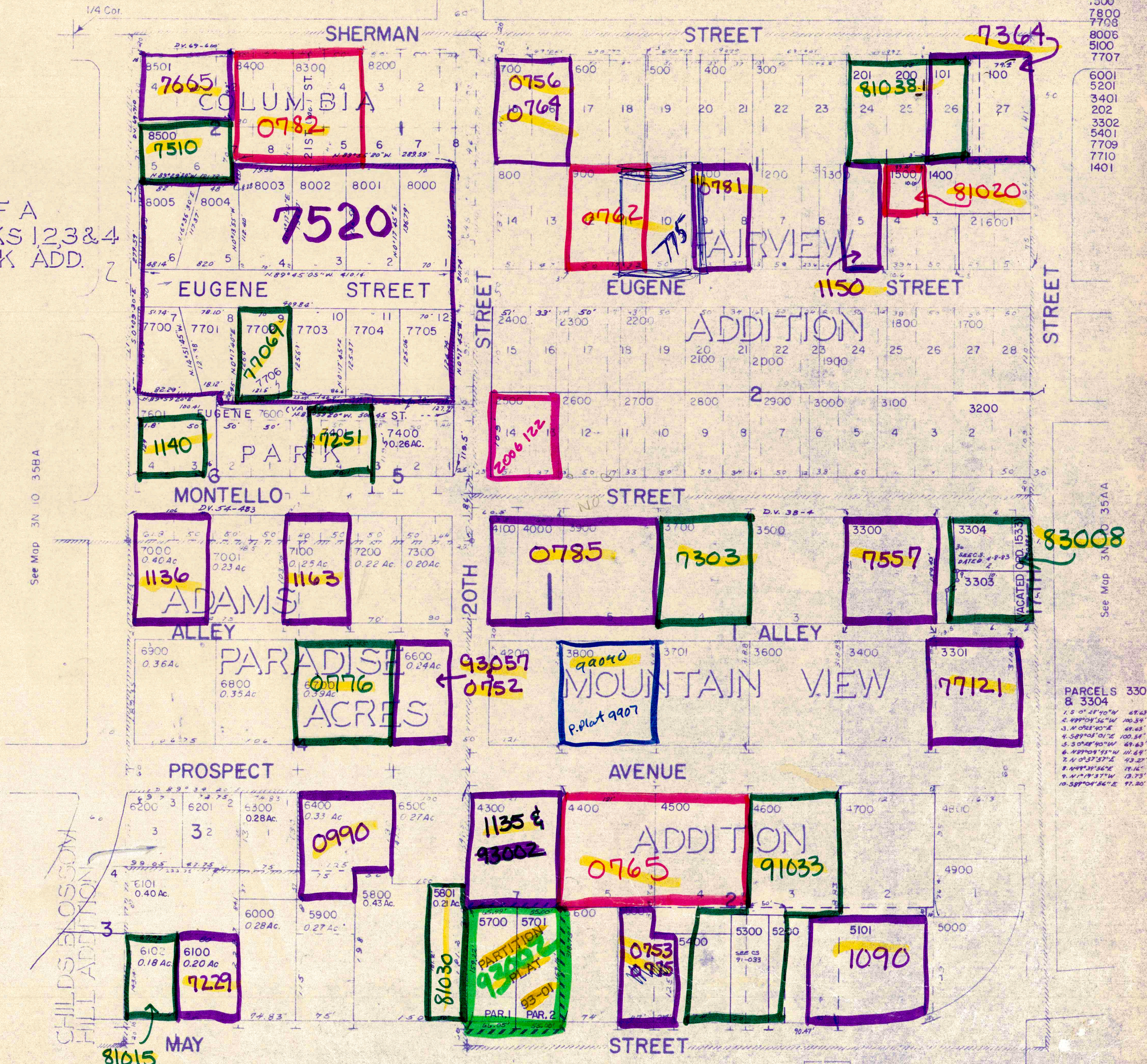


CANCELLED NO.

- 7002
- 7602
- 7900
- 8100
- 8600
- 8700
- 8800
- 7500
- 7800
- 7708
- 8006
- 5100
- 7707

See Map 3N 10 26DC

REPLAT OF A  
PORTION OF BLKS 1,2,3 & 4  
COLUMBIA PARK ADD.



See Map 3N 10 35BA

See Map 3N 10 35AA

PARCELS 3303 & 3304  
 1. 5' 0" 28' 10" W 49.63'  
 2. 119' 0" 56" W 100.54'  
 3. 11' 0" 28' 10" E 49.63'  
 4. 58' 0" 10" W 100.54'  
 5. 50' 0" 40" W 49.63'  
 6. 119' 0" 56" W 100.54'  
 7. 11' 0" 28' 10" E 49.63'  
 8. 119' 0" 56" W 100.54'  
 9. 11' 0" 28' 10" E 49.63'  
 10. 58' 0" 10" W 100.54'

See Map 3N 10 35AC