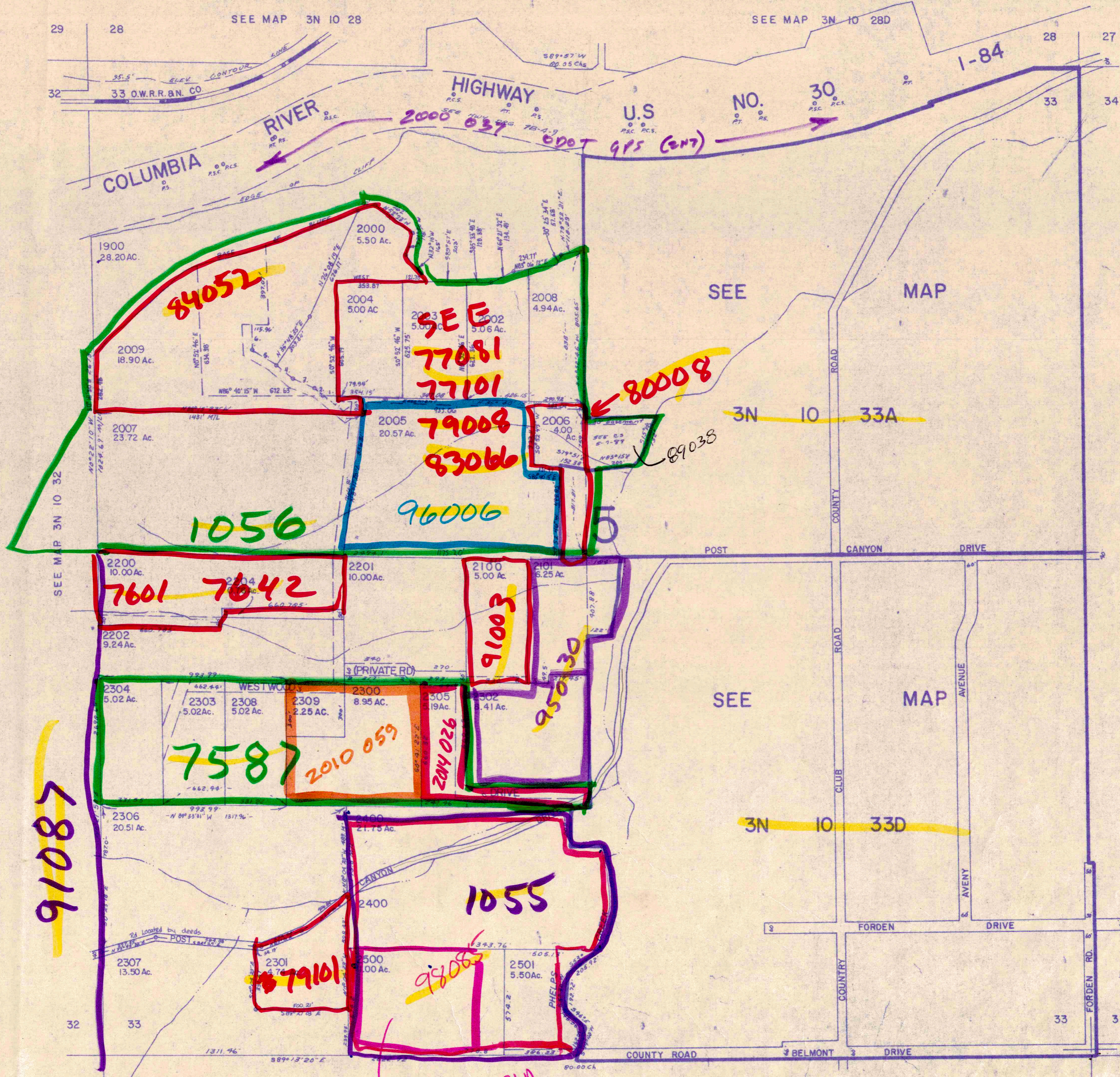


This map was prepared for assessment purposes only.

SECTION 33 T.3N. R.10E. W.M.
HOOD RIVER COUNTY

1" = 400'

3N 10 33
& INDEX



PARCEL 2009
 1. S.86°40'18"E 69.71'
 2. N.48°04'44"W 52.37'
 3. N.45°10'18"W 126.47'
 4. N.49°15'25"W 119.22'
 5. N.58°25'40"W 157.06'
 6. N.9°53'02"W 144.35'

CANCELLED NO'S
 100 thru 1800
 2001
 2401
 2402
 2600 thru 4900
 2203

SEE MAP 3N 10 34

3N 10 33
& INDEX

RECEIVED

SEE MAP 2N 10 4