

THIS MAP WAS PREPARED FOR
ASSESSMENT PURPOSE ONLY

NW1/4 SE1/4 SEC. 25 T.3N. R.10E. W.M.
HOOD RIVER COUNTY

~~3N 10 25DB~~
HOOD RIVER

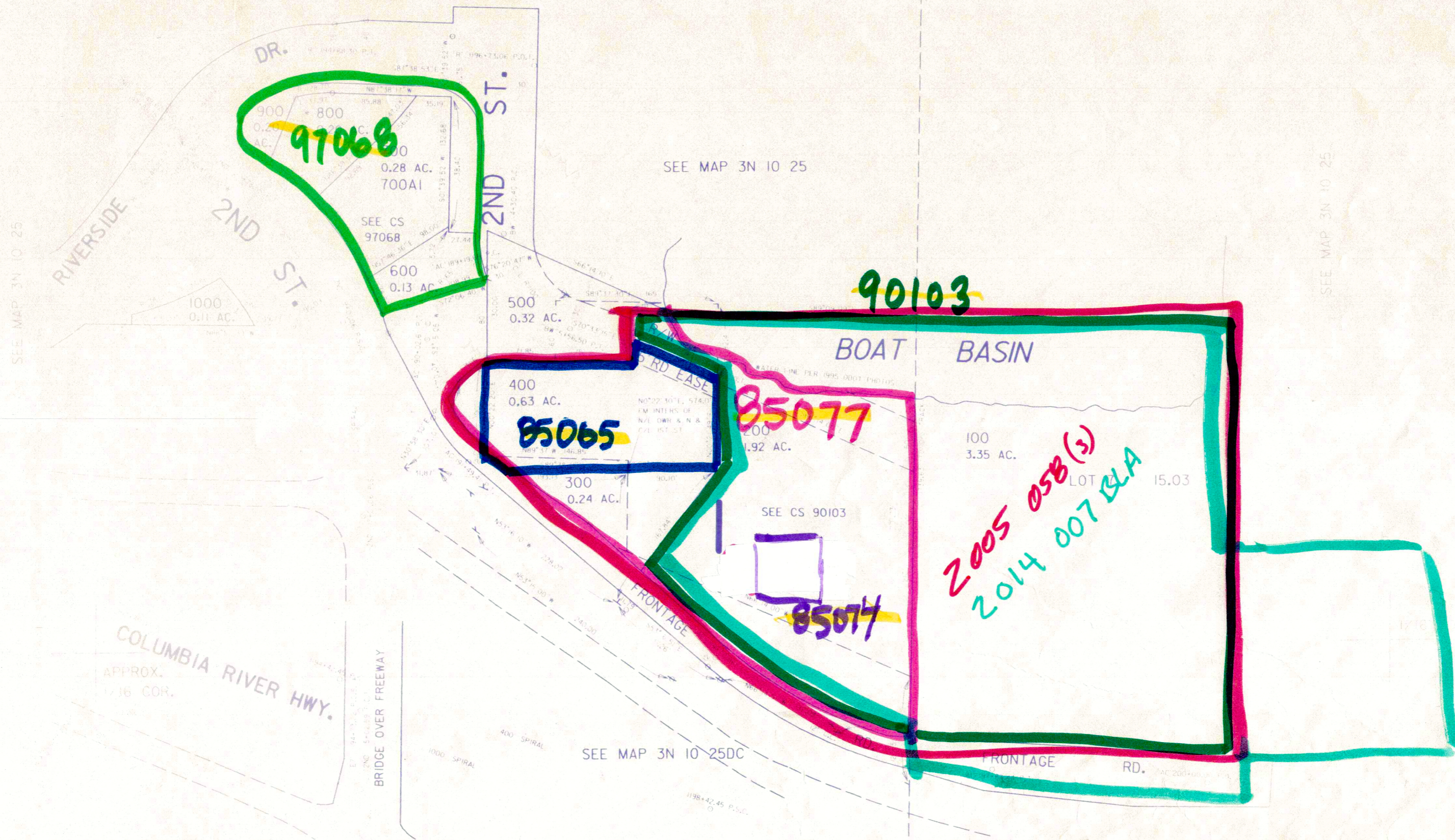
CEN. SEC.

1" = 100'

1/16 COR.

NE COR
NATHANIEL COE
D.L.C. 37

99036
2ND ST INTERCHANGE



~~3N 10 25DB~~
HOOD RIVER