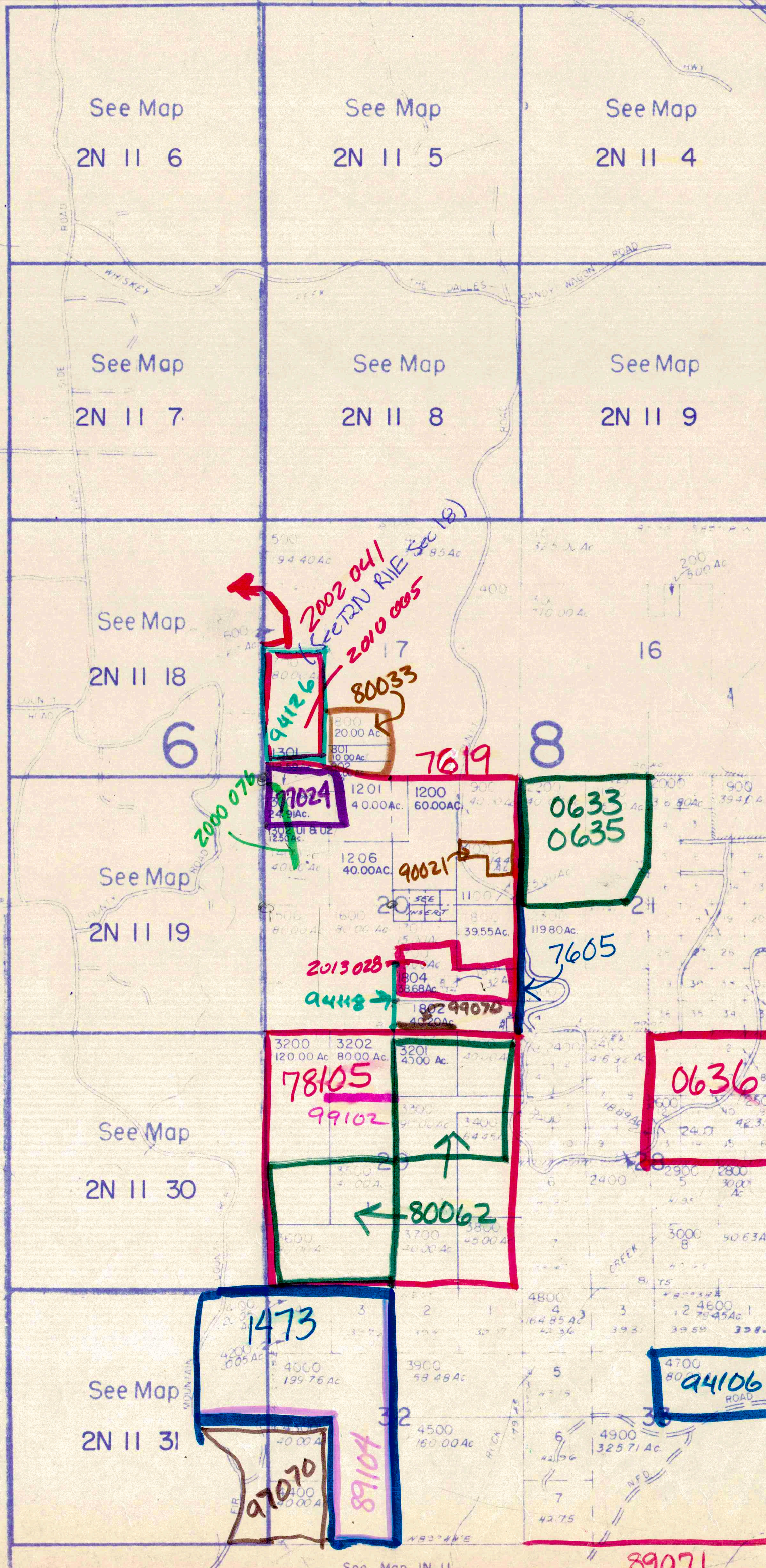


1" = 2000'
See Map 3N 11

CWRR B NCC COLUMBIA RIVER
COLUMBIA RIVER HIGHWAY



CANCELLED NO'S
1803
2301
1204

78072-B

INSERT
SEC. 20
1" = 400'

CEN. SEC. 20	1203 10.00AC.			1/16 COR.
		1202 2.50AC.	1205 7.50AC.	

See Map 2N 11 6

See Map
2N 11 18

See Map
2N 11 19

See Map
2N 11 30

See Map
2N 11 31

See Map 1N 11

CEDAR SPRINGS
PINEHURST, AMENDED PLAT OF SPITZENBERG SUBDIVISION

RECEIVED
MAY 28 1911