

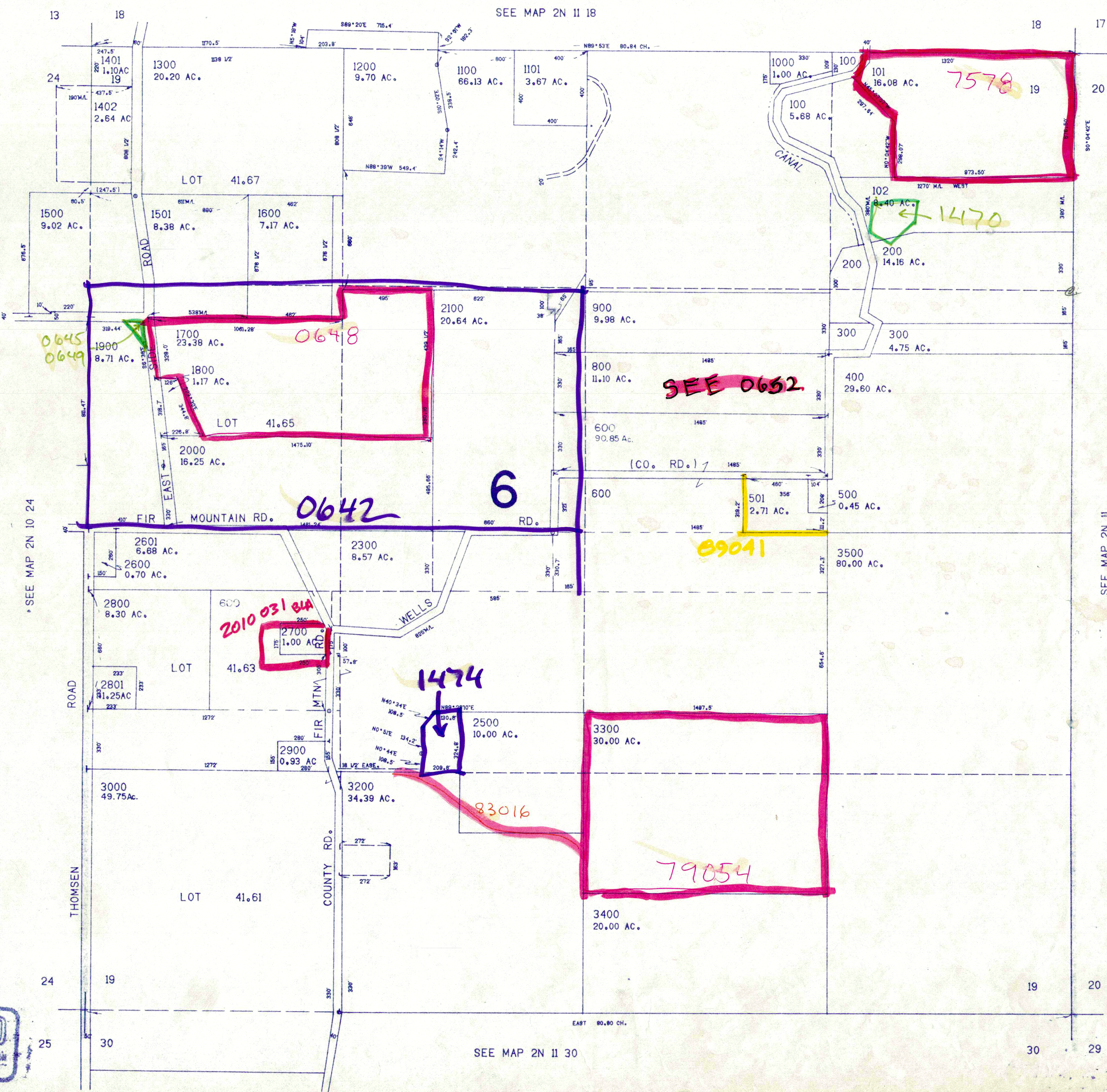
THIS MAP WAS PREPARED FOR ASSESSMENT PURPOSE ONLY.

Winchell
Butte Rd
0653

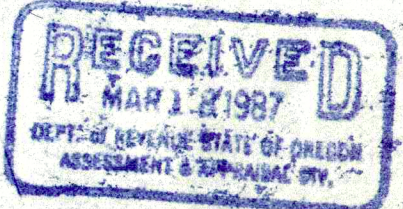
SECTION 19 T.02N. R.11E. W.M.
HOOD RIVER COUNTY

Wells Dr
0651

02N 11 19



- CANCELLED NO.'S
- 2400
 - 2602
 - 2701
 - 3100
 - 1400
 - 700
 - 2200
 - 2301
 - 2401
 - 2402
 - 2702
 - 2901



02N 11 19