

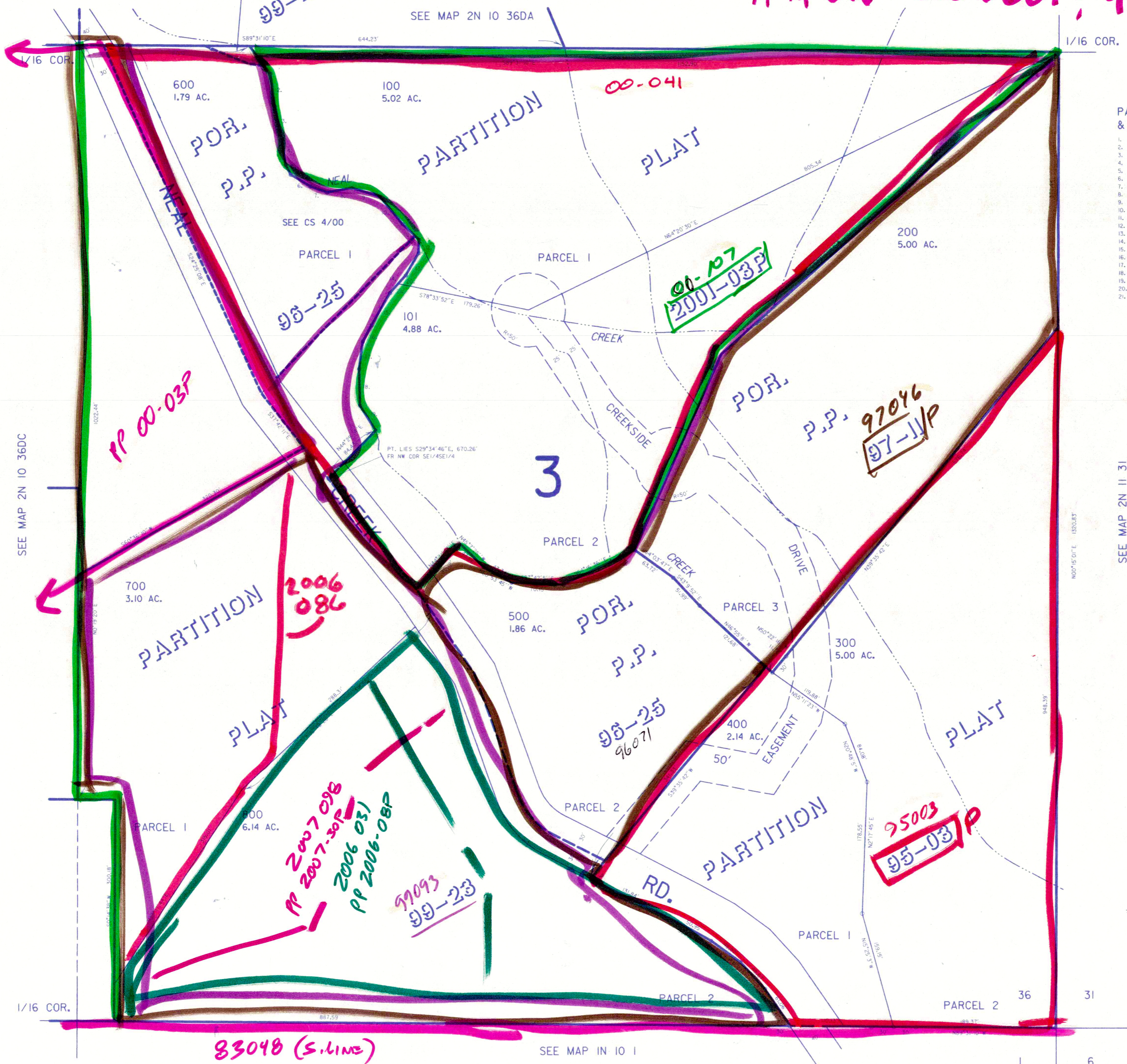
THIS MAP WAS PREPARED FOR ASSESSMENT PURPOSE ONLY

SE1/4SE1/4 SECTION 36 T.2N. R.10E. W.M.
HOOD RIVER COUNTY

2N 10 36DD

1" = 100'

1/4 1/4 Sec - See 0607; 94010



PARCELS 100 & 600

1.	N36°57'04"W	46.51'
2.	N7°5'57"W	45.03'
3.	N12°27'27"W	45.16'
4.	N7°38'13"W	35.34'
5.	N28°12'18"W	14.71'
6.	N58°28'41"W	30.86'
7.	N70°18'50"W	24.14'
8.	S79°48'41"W	34.02'
9.	N72°37'23"W	39.75'
10.	N39°13'48"W	47.95'
11.	N45°50'27"W	30.50'
12.	N2°3'19"E	18.23'
13.	N30°16'51"E	34.86'
14.	N41°46'58"E	31.97'
15.	N29°49'16"E	49.99'
16.	N28°7'40"E	25.33'
17.	N7°48'38"E	37.32'
18.	N1°9'30"W	49.37'
19.	N32°5'36"W	40.24'
20.	S41°46'58"W	15.52'
21.	S41°46'58"W	16.45'

SEE MAP 2N 10 36DC

SEE MAP 2N 11 31

83048 (S. line)

SEE MAP IN 10 1

Revised 3/12/01, JD

2N 10 36DD