

Section 35 T2N R10E WM

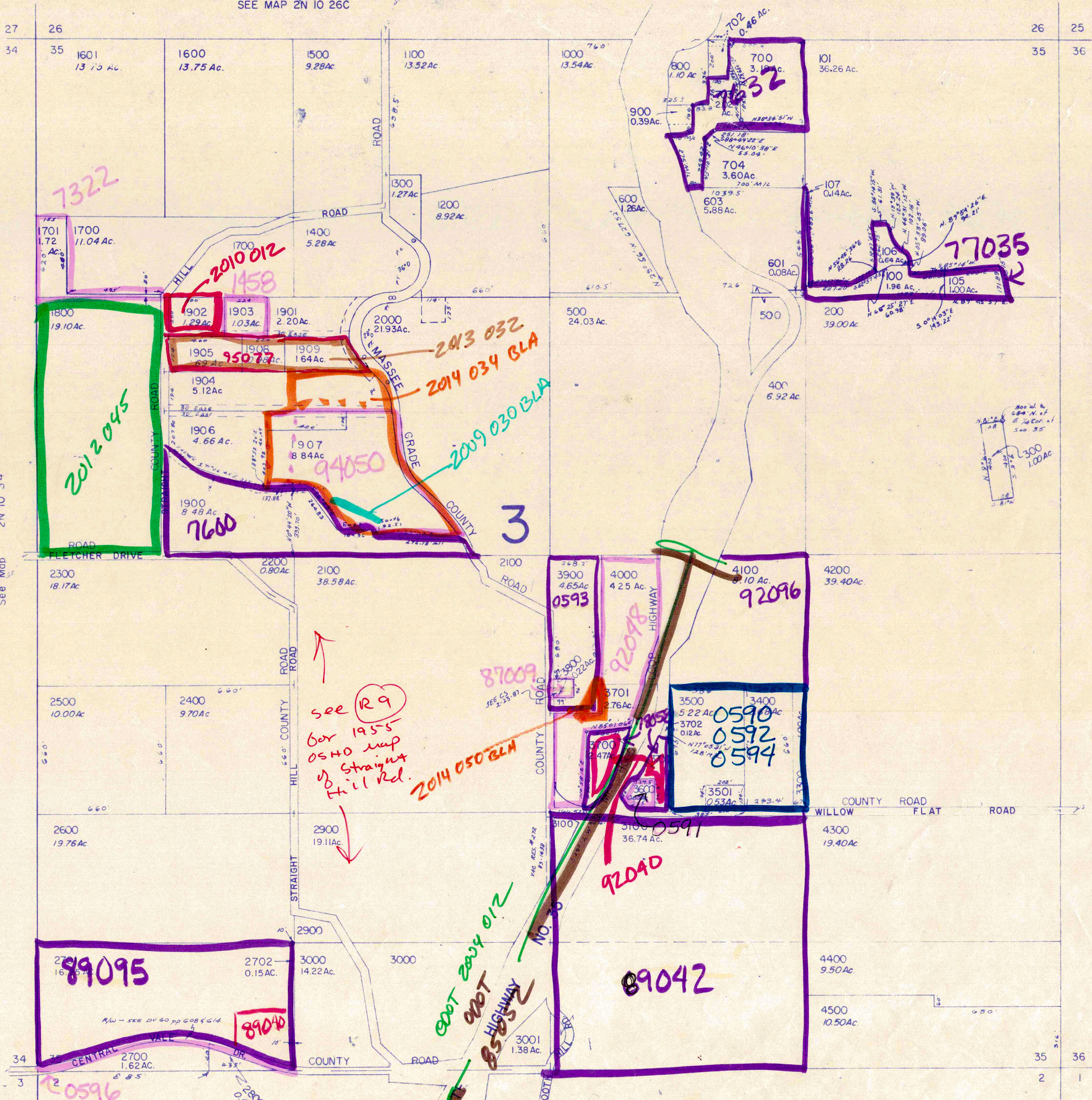
Hood River County

1" = 400'

2N 10 35

SEE MAP 2N 10 26C

SEE MAP 2N 10 26D



CANCELLED NO'S

- 3901
- 102
- 103
- 104
- 3200
- 701
- 602
- 2001

See Map 2N 10 34

See Map 2N 10 36

See Map IN 10 2

2N 10 35

9-93