

THIS MAP WAS PREPARED FOR ASSESSMENT PURPOSE ONLY

NE 1/4 SEC. 27 T.2N. R.10E. W.M.
HOOD RIVER COUNTY

2N 10 27A

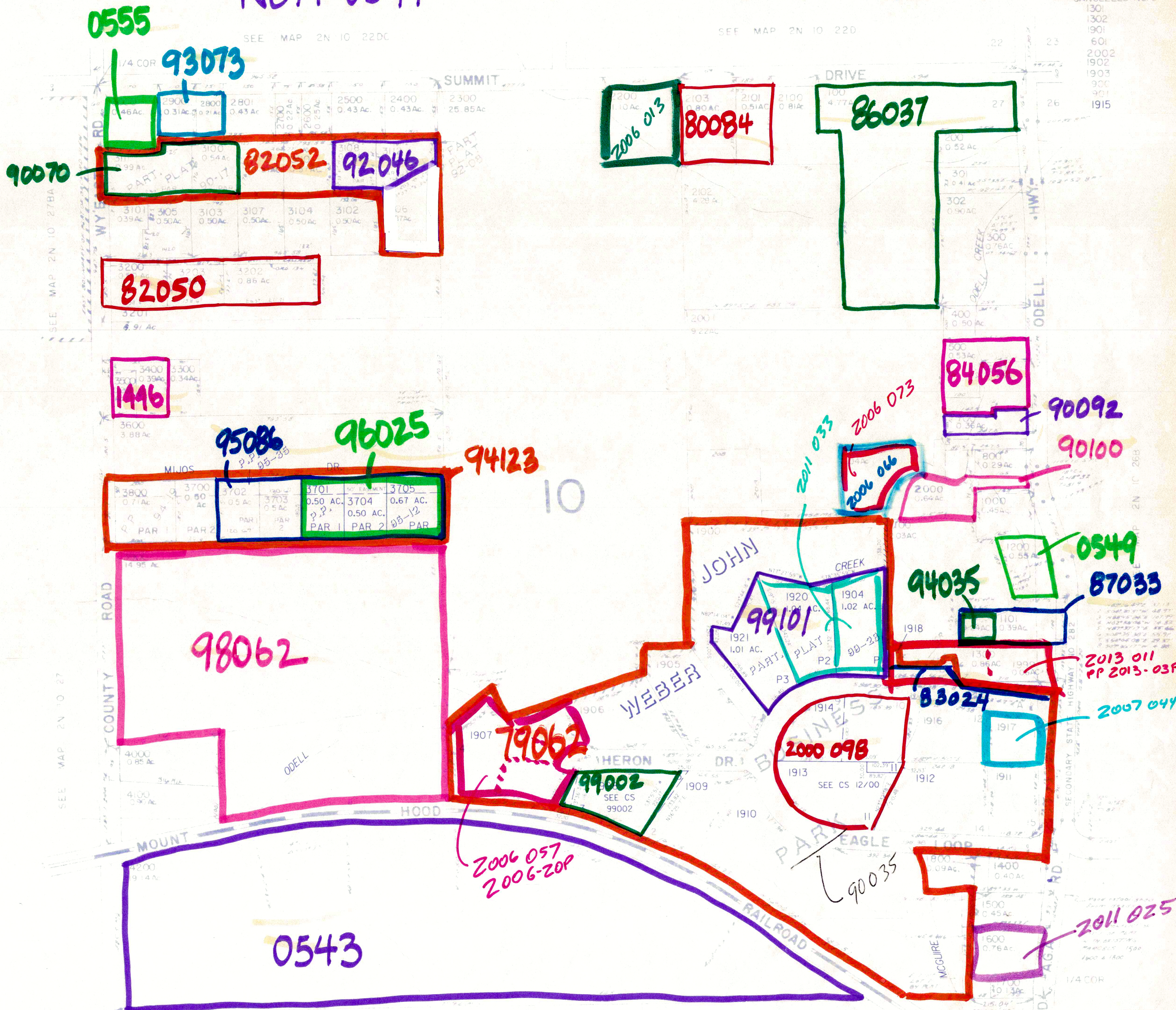
TOPO ODELL SCHOOL
1412

NE 1/4 0544

1" = 200'

CANCELLED NO'S

- 1301
- 1302
- 1901
- 601
- 2002
- 1902
- 1903
- 900
- 901
- 1915



Revised
5/1/01, JD
9-17-01

2N 10 27A