

SE1/4 SEC. 26 T.02N. R.10E. W.M.  
HOOD RIVER COUNTY

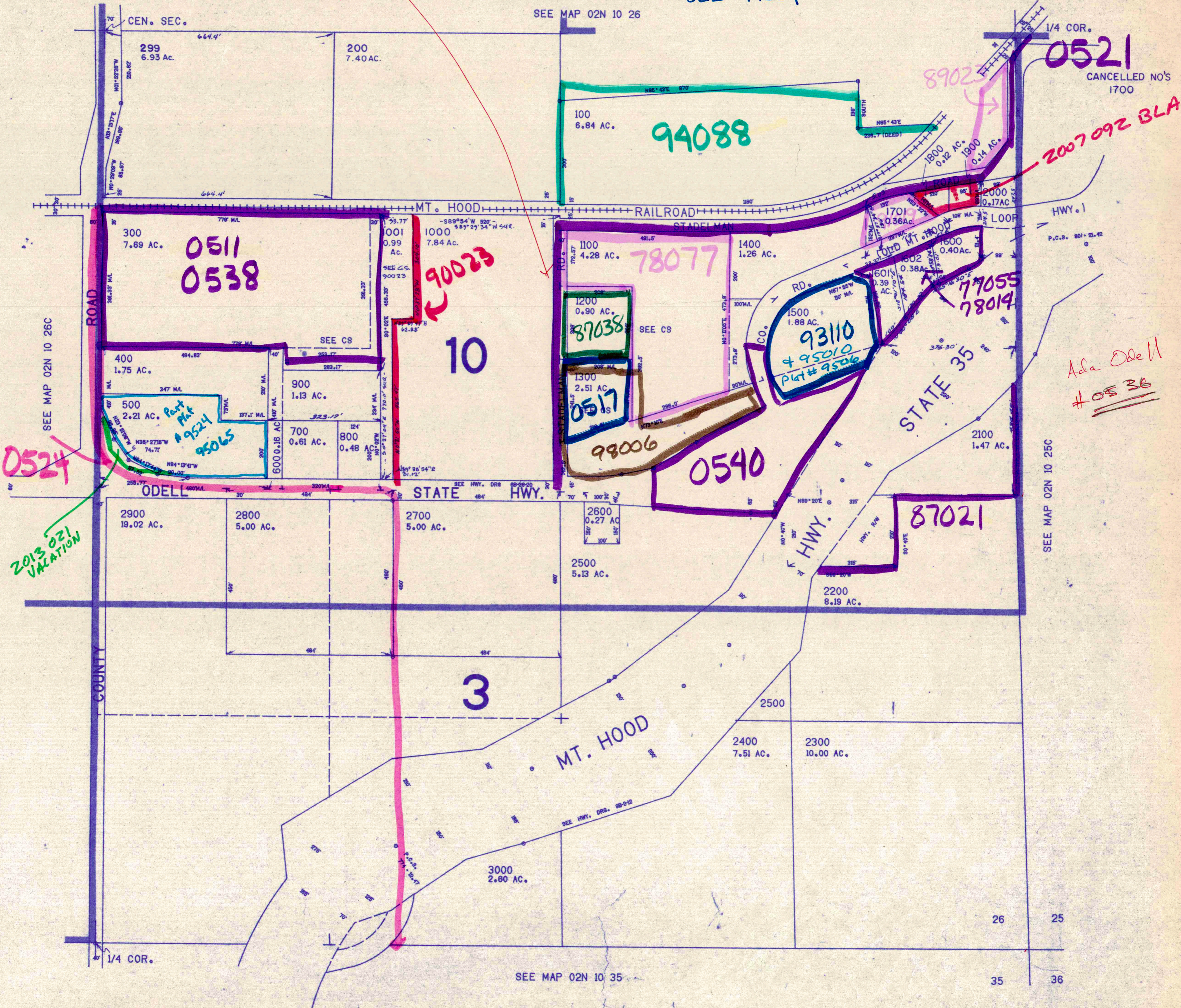
02N 10 26D

THIS MAP WAS PREPARED FOR  
ASSESSMENT PURPOSE ONLY.

1"=200'

BREAKDOWN OF SE. 1/4  
SEE 77004

*Revoke Bros. 10c  
OS 39  
1441*



02N 10 26D

9/92