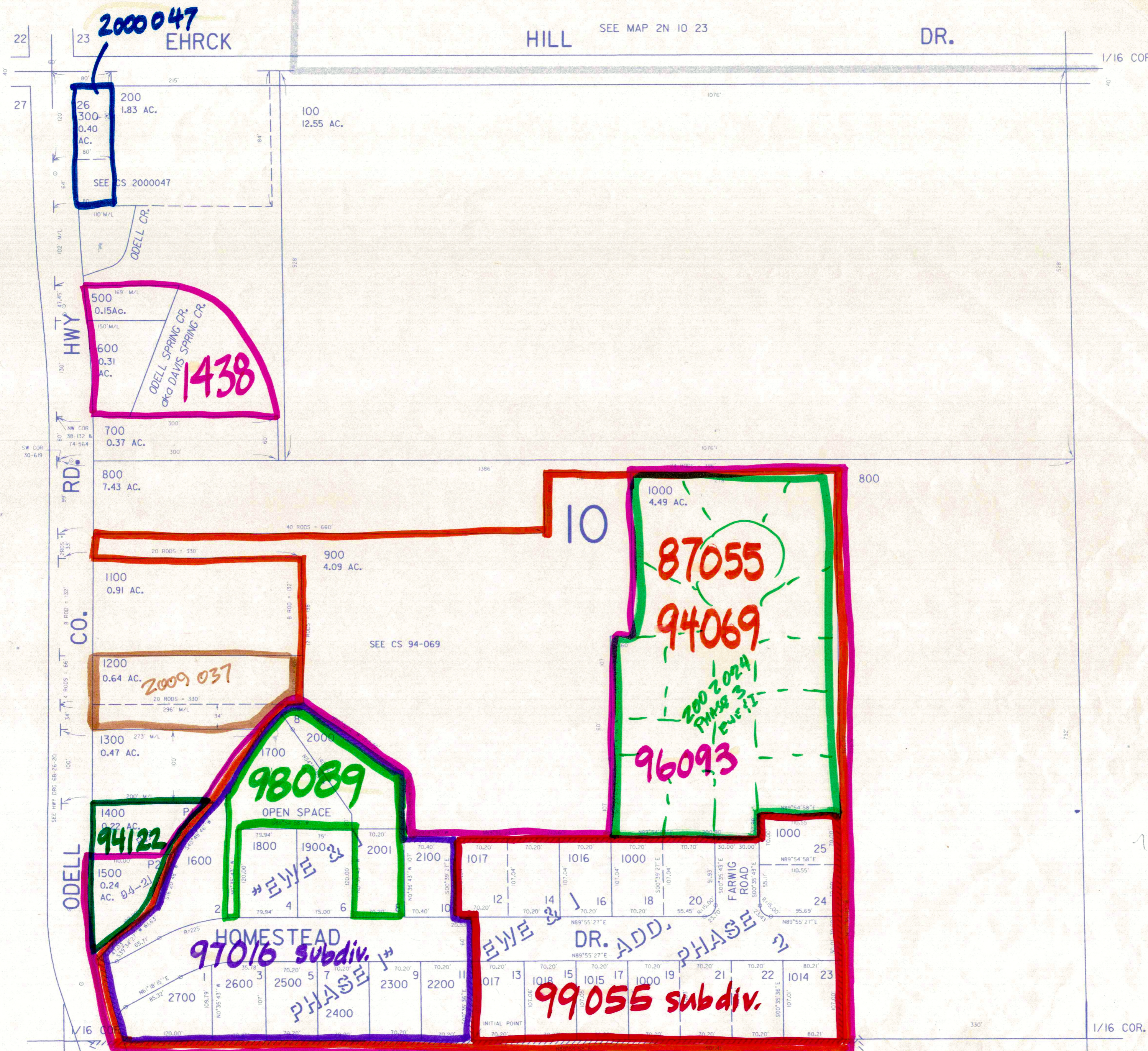


THIS MAP WAS PREPARED FOR  
ASSESSMENT PURPOSE ONLY

NW1/4 NW1/4 SEC. 26 T.2N. R.10E. W.M.  
HOOD RIVER COUNTY

2N 10 26BB

1" = 100'



CANCELLED NO.  
1001 THRU 1013  
201  
400

SEE MAP 2N 10 26B

5.81

1203

SEE MAP 2N 10 26BC

SEE MAP 2N 10 26B

Revised  
7/23/01, JD  
9-17-01

2N 10 26BB