

THIS MAP WAS PREPARED FOR ASSESSMENT PURPOSE ONLY

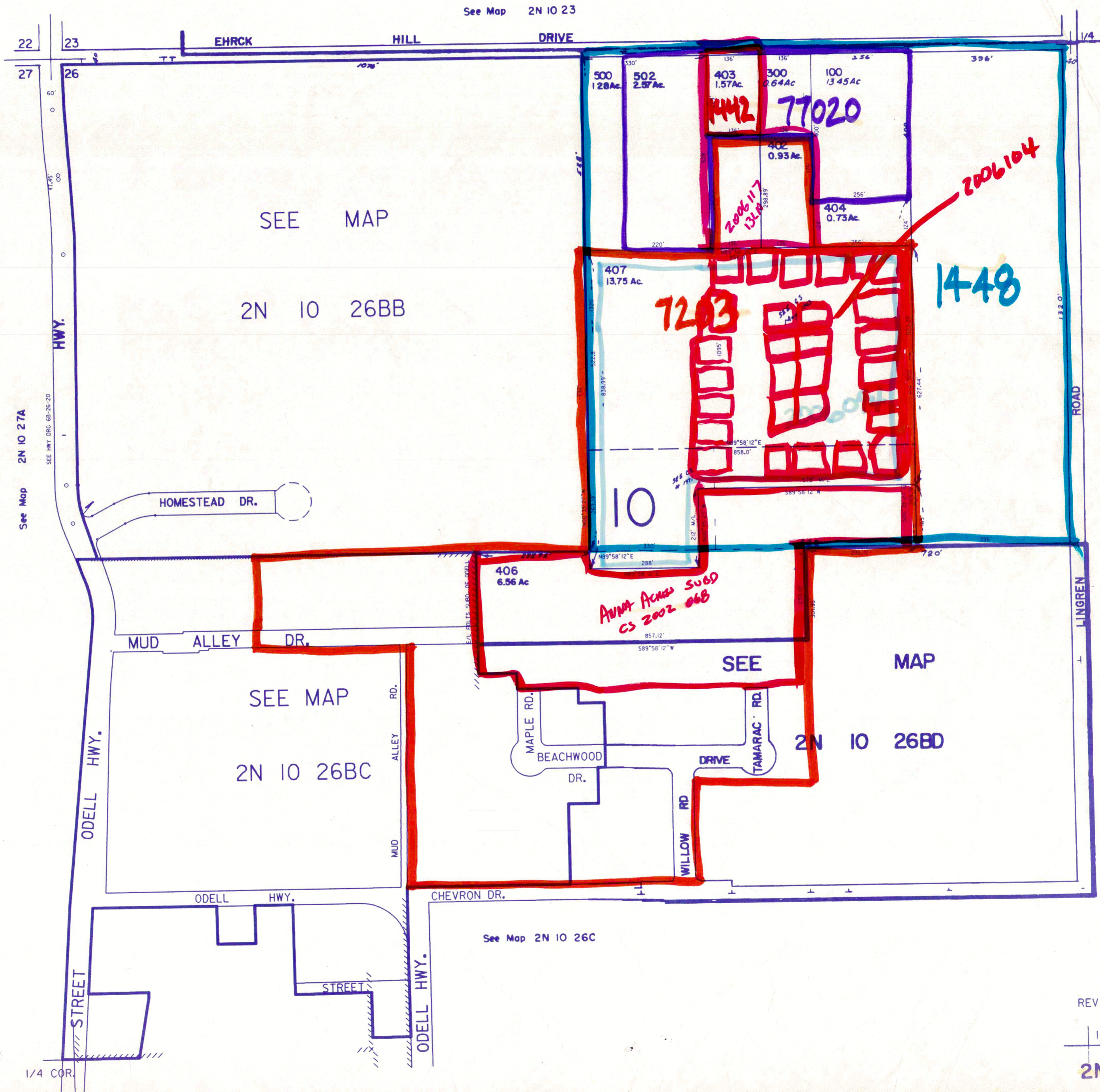
NW1/4 Sec. 26 T2N R10E WM

2N 10 26B

Hood River County

1"=200'

Road 0513



CANCELLED NO.
400
401
501
600 THRU
4500

See Map 2N 10 26

REVISED 1-29-98, CS

9-17-01

1/4 COR.

2N 10 26B