

THIS MAP WAS PREPARED FOR ASSESSMENT PURPOSE ONLY

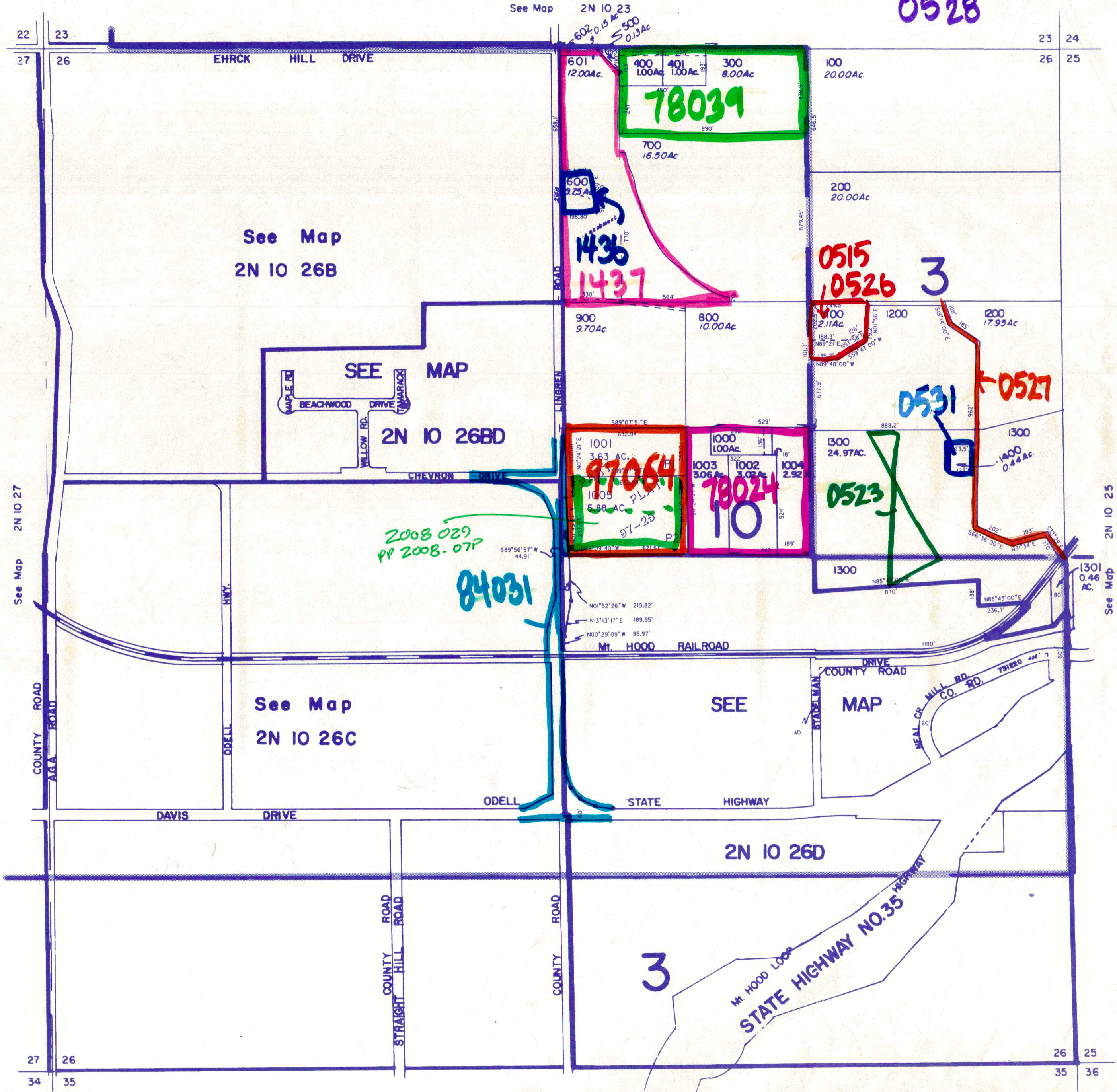
Section 26 T2N R10E WM
Hood River County
1"=400'

2N 10 26
& INDEX

CUTLER BROS.
0512

DAVIS DITCH
0528

Cancelled Nos
1500 thru
3600



See Map 2N 10 35

REVISED 12-11-97, JD
9-12-01

2N 10 26
& INDEX