

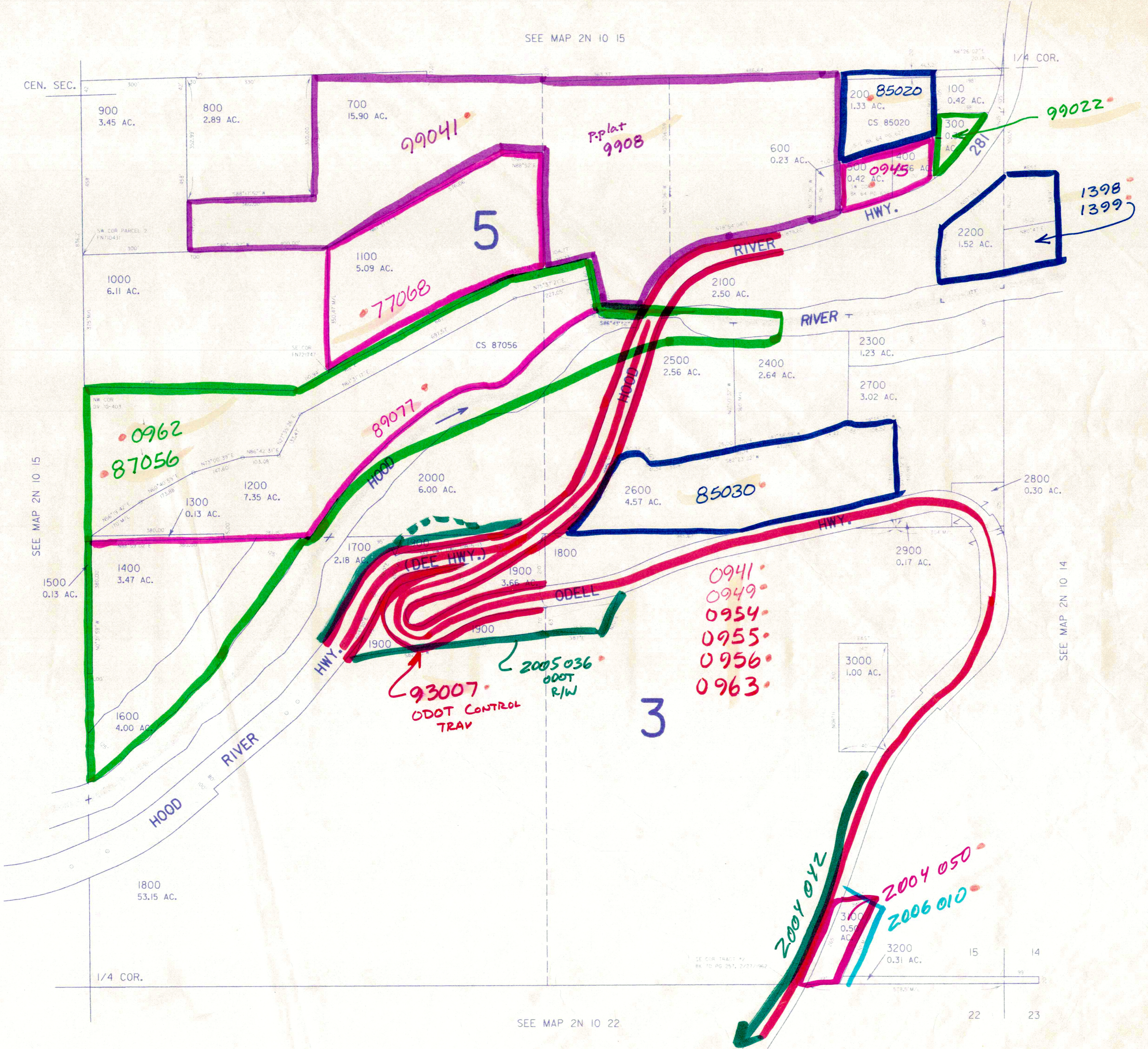
THIS MAP WAS PREPARED FOR  
ASSESSMENT PURPOSE ONLY

SE1/4 SEC. 15 T.2N. R.10E. W.M.  
HOOD RIVER COUNTY

2N 10 15D

1" = 200'

SEE MAP 2N 10 15



CEN. SEC.

SEE MAP 2N 10 15

SEE MAP 2N 10 14

SEE MAP 2N 10 22

Revised 8/26/99, JD

2N 10 15D

900  
3.45 AC.

800  
2.89 AC.

700  
15.90 AC.

200  
1.33 AC.

100  
0.42 AC.

1000  
6.11 AC.

1100  
5.09 AC.

600  
0.23 AC.

300  
0.42 AC.

300  
0.42 AC.

2200  
1.52 AC.

0962

87056

1200  
7.35 AC.

1300  
0.13 AC.

2000  
6.00 AC.

2500  
2.56 AC.

2400  
2.64 AC.

2300  
1.23 AC.

2700  
3.02 AC.

1500  
0.13 AC.

1400  
3.47 AC.

1700  
2.18 AC.

1900  
3.66 AC.

2600  
4.57 AC.

85030

2800  
0.30 AC.

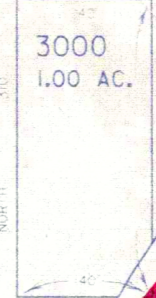
2900  
0.17 AC.

1800  
53.15 AC.

93007  
ODOT CONTROL TRAV

2005036  
ODOT R/W

- 0941
- 0949
- 0954
- 0955
- 0956
- 0963



2004012

2004050  
2006010

3000  
0.50 AC.

3200  
0.31 AC.

15 14  
22 23