

NE1/4 SEC. 02 T.02N. R.10E. W.M.
HOOD RIVER COUNTY

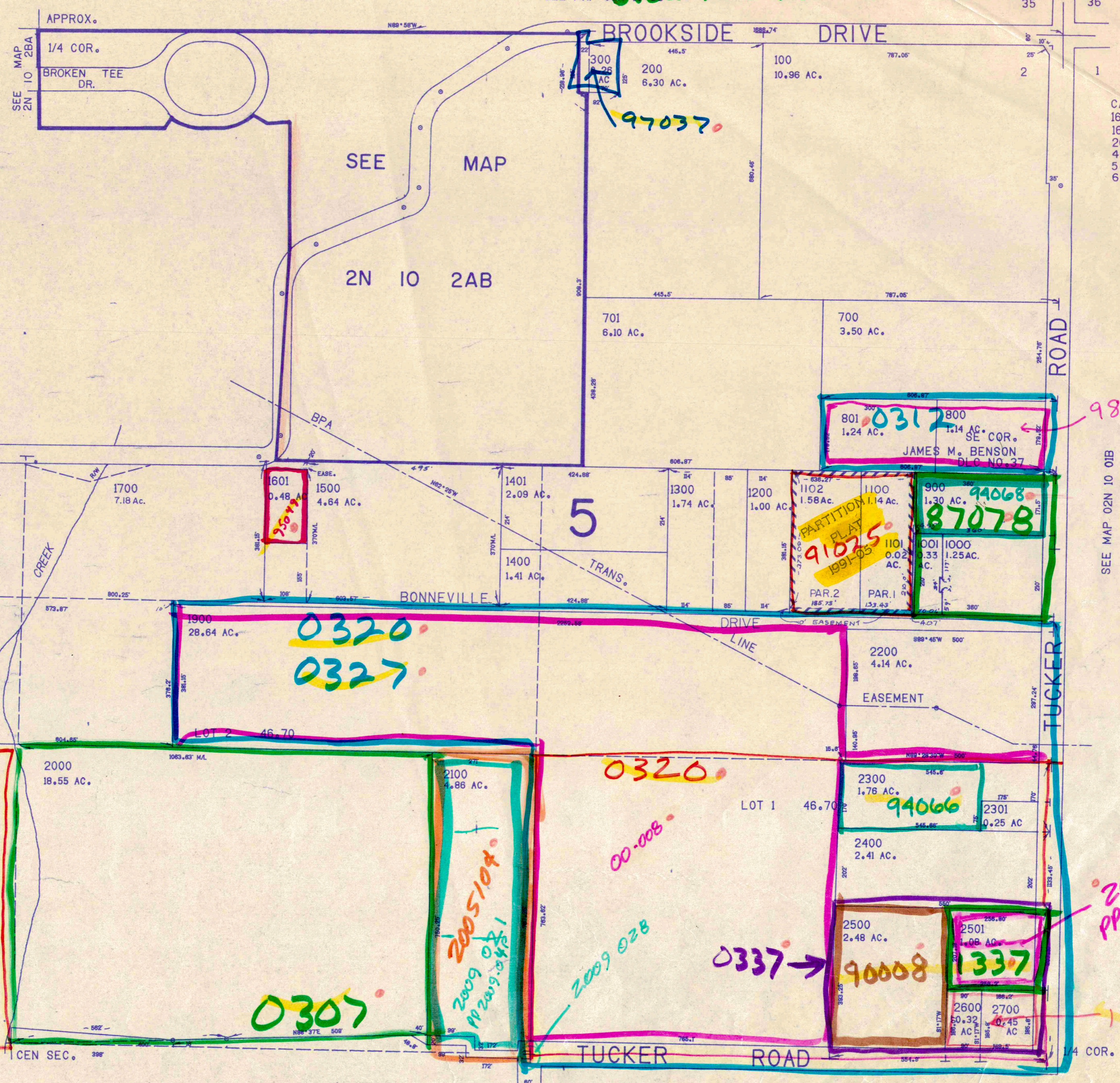
2N 10

THIS MAP WAS PREPARED FOR
ASSESSMENT PURPOSE ONLY.

1"=200'

ENTIRE SEC. # 1343
Brookside Rd # 1344

SEE MAP 02N 10 01B



CANCELLED NO.'S
1600
1602
2001
400
500
600

SEE MAP 02N 10 2B

SEE MAP 02N 10 01B

SEE MAP 02N 10 02D

87004

0307

2005104
2009 028
PP 2009-0421

0320

00-008

2009 028

0337

90008

1337

2006 017
PP 2006-04P

1339

98077

5

PARTITION
FLAT
91075
1991-05

94068
87078

0312

JAMES M. BENSON
D.L.O. NO. 37

APPROX.
1/4 COR.
BROKEN TEE
DR.

SEE MAP
02N 10 2BA

SEE MAP

2N 10 2AB

BROOKSIDE DRIVE

ROAD

TUCKER

TUCKER ROAD

CEN SEC.

1/4 COR.

1800
4.22 Ac.

1700
7.18 Ac.

1601
0.48 AC.

1500
4.64 AC.

1401
2.09 AC.

1300
1.74 AC.

1200
1.00 AC.

1102
1.58 AC.

1100
1.14 AC.

900
1.30 AC.

1101
0.02 AC.

1001
0.33 AC.

1000
1.25 AC.

1900
28.64 AC.

0320
0327

1400
1.41 AC.

2200
4.14 AC.

EASEMENT

2000
18.55 AC.

LOT 2
46.70

2100
4.86 AC.

LOT 1
46.70

2300
1.76 AC.

94066

2301
0.25 AC.

2400
2.41 AC.

2500
2.48 AC.

2501
1.09 AC.

2600
0.32 AC.

2700
0.45 AC.