

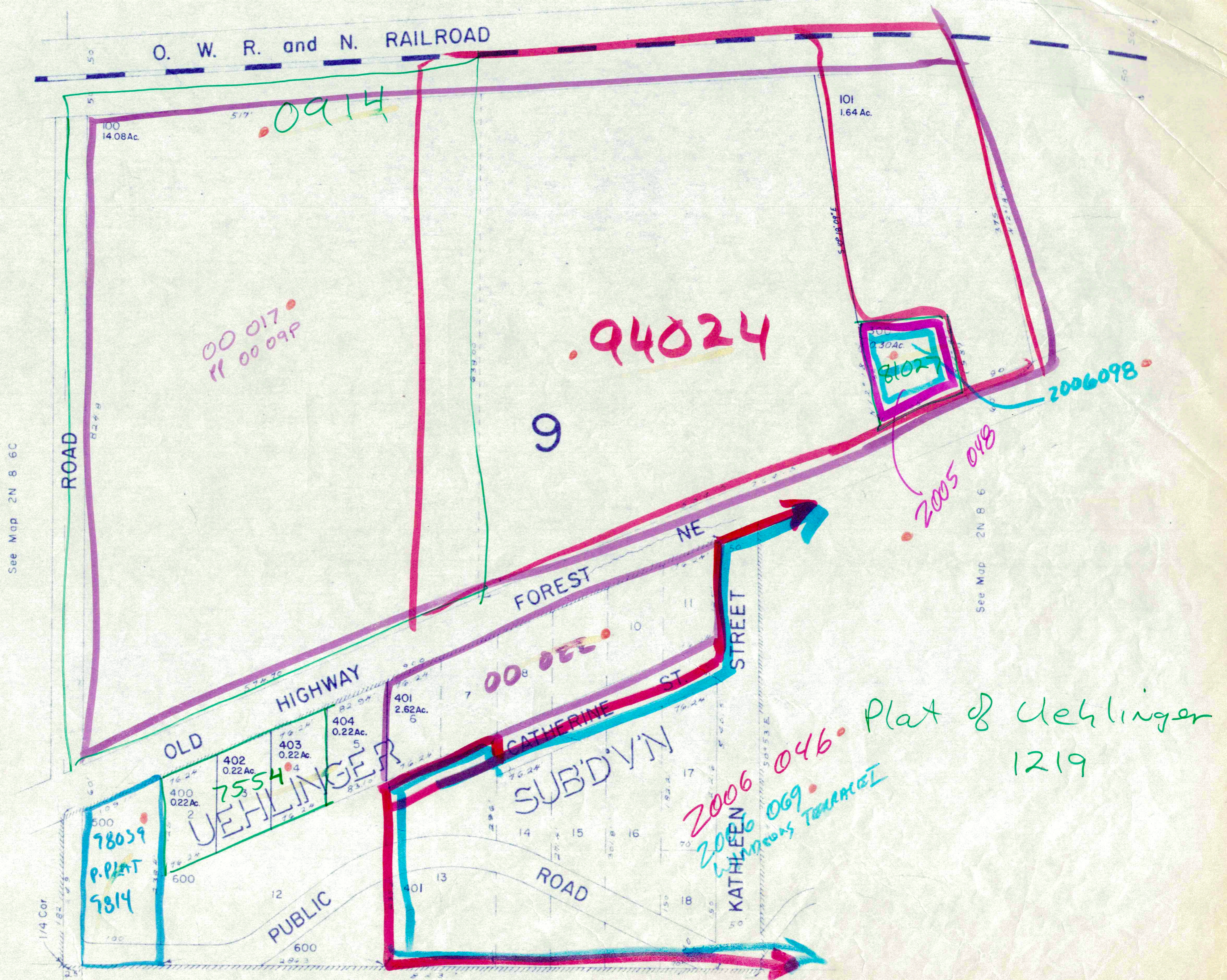
SW1/4 SE1/4 Sec. 6 T2N R8E WM  
HOOD RIVER COUNTY

1"=100'

2N 8 6DC

Cancelled No's.  
200  
700

See Map 2N 8 6



See Map 2N 8 6C

See Map 2N 8 6

See Map 2N 8 7

RECEIVED  
JUN 13 1985  
DEPT. OF REVENUE & STATE OF OREGON  
ASSESSMENT & APPRAISAL DIV.

2N 8 6DC