

NE1/4 NE1/4 SEC. 12 T.2N. R.7E. W.M.  
HOOD RIVER COUNTY

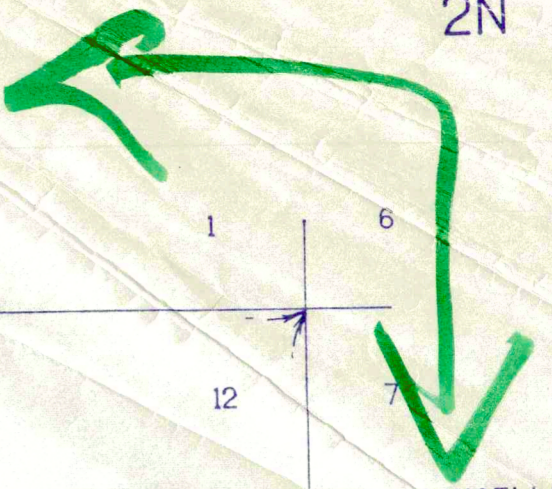
2N 7 2AA

THIS MAP WAS PREPARED FOR  
ASSESSMENT PURPOSE ONLY.

1"=100'

SEE MAP 2N 7

COLUMBIA RIVER  
2008 065



CANCELLED S.

- 200
- 300
- 301
- 501
- 1001
- 2002
- 2901
- 3101

LOT 1  
39.29

O.W.R. & N.  
RAILROAD

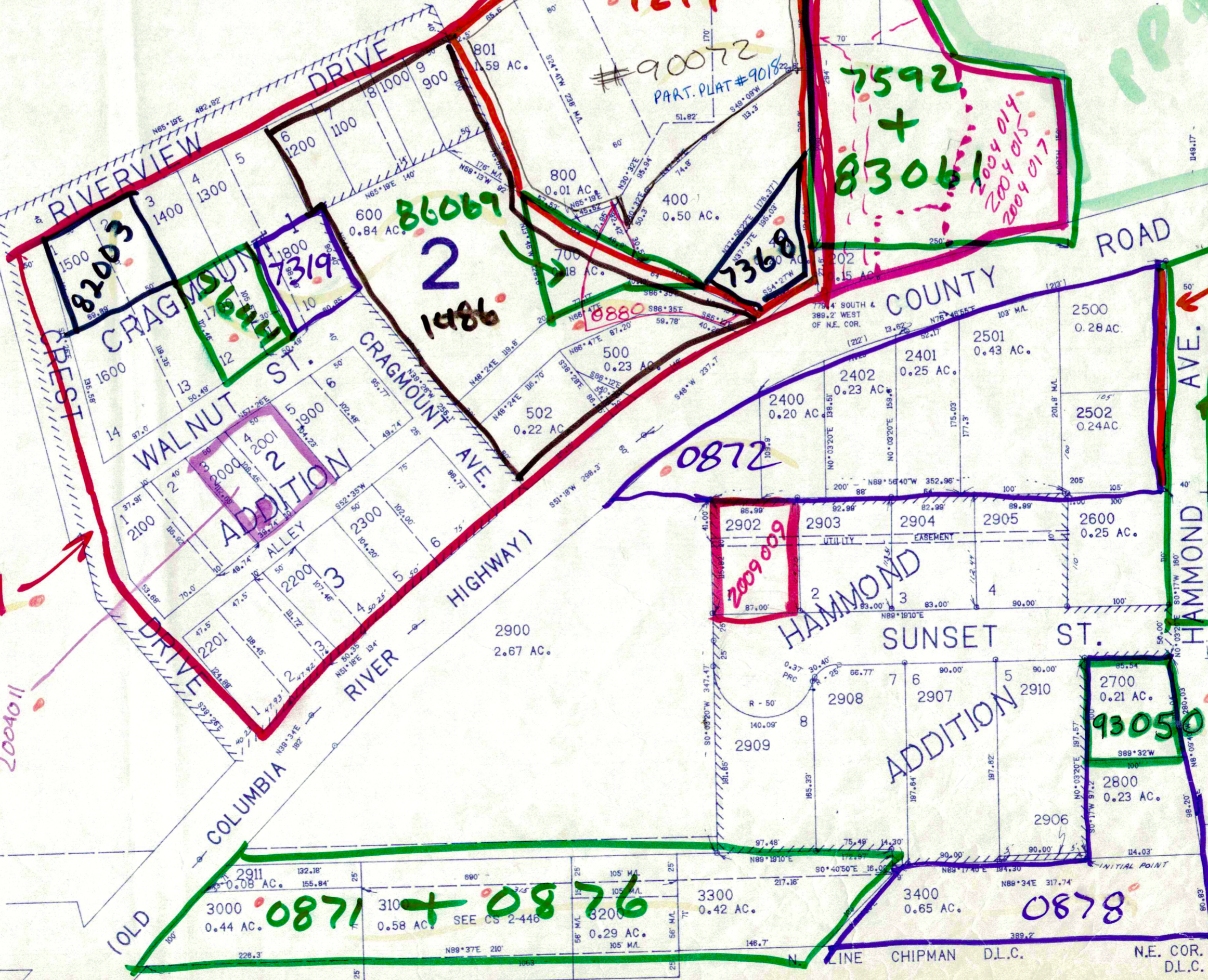
Cragmount Plat  
# 1323

8112

93096

189335

SEE MAP 2N 7 12AB



0879

2004011

82054

0874

7671

SEE MAP 2N 8 7B

LOT 8  
3.42

0871 + 0876

0878

93050

2N 7 12AA

SEE MAP 2N 7 12AD