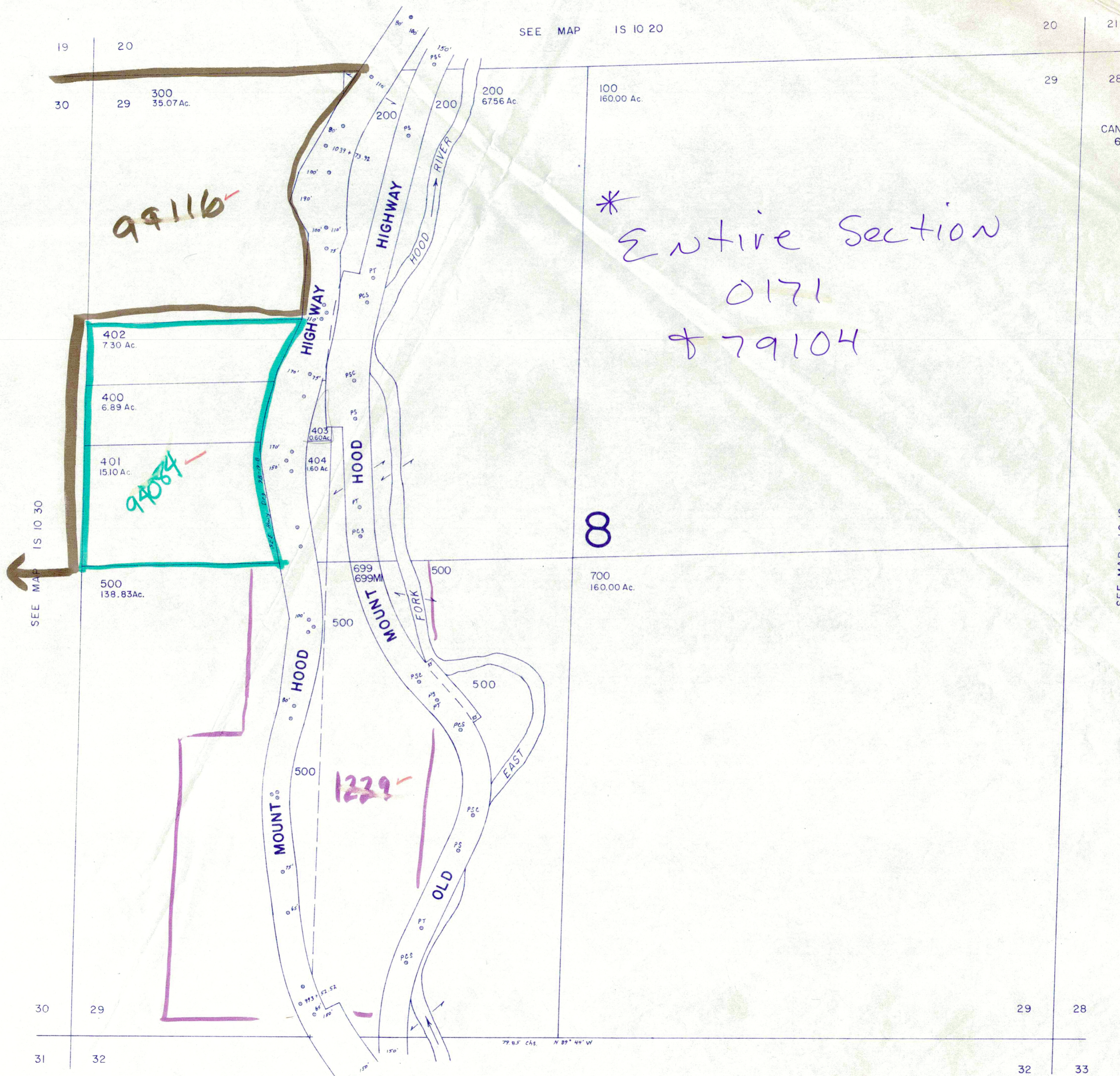


SECTION 29 T1S R10E WM

HOOD RIVER COUNTY

1"=400'

IS 10 29



SEE MAP IS 10 20

20 21

19 20

30 29 300
35.07 Ac.

200
6756 Ac.

100
160.00 Ac.

29 28

CANCELLED NO.'S
600

*
Entire Section
0171
79104

SEE MAP IS 10 30

8

SEE MAP IS 10

402
7.30 Ac.

400
6.89 Ac.

401
15.10 Ac.

500
138.83 Ac.

403
0.60 Ac.

404
1.60 Ac.

699
699M

700
160.00 Ac.

30 29

29 28

31 32

32 33

SEE MAP IS 10

IS 10 29