

NE1/4 SW1/4 SEC. 06 T.01S. R.10E. W.M.  
HOOD RIVER COUNTY

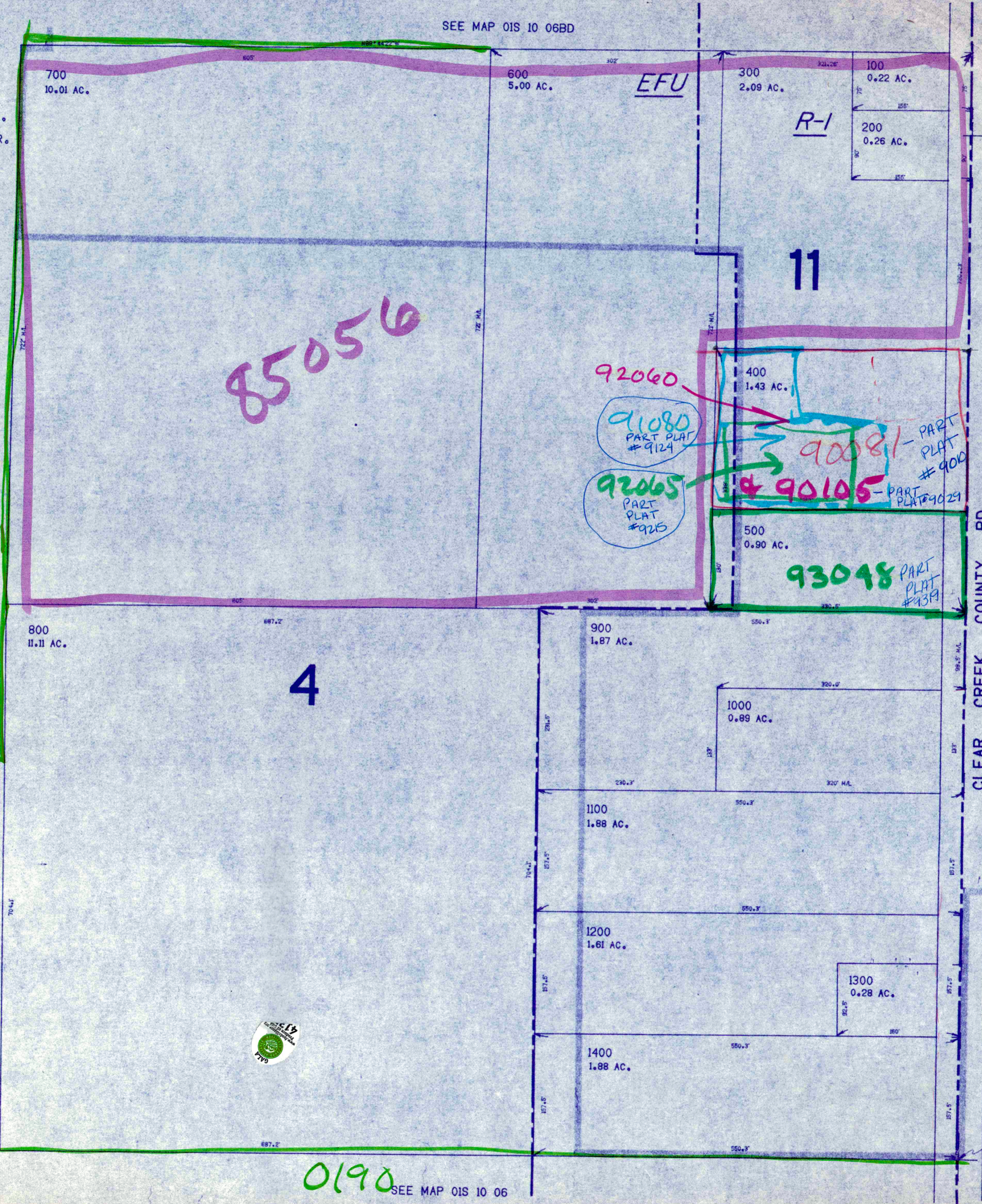
01S 10 06CA

THIS MAP WAS PREPARED FOR  
ASSESSMENT PURPOSE ONLY.

1"-100

SEE MAP 01S 10 06BD

APPROX.  
1/16 COR.



CEN. SEC.

CLEAR CREEK COUNTY RD.

SEE MAP 01S 10 06

1/16 COR.

4

11

85056

79070

92060

91080  
PART PLAT  
#9124

92065  
PART PLAT  
#9215

90081 - PART  
PLAT  
#900

90105 - PART  
PLAT #9029

93048  
PART  
PLAT  
#9319

700  
10.01 AC.

600  
5.00 AC.

300  
2.09 AC.

100  
0.22 AC.

200  
0.26 AC.

800  
11.11 AC.

900  
1.87 AC.

1000  
0.89 AC.

1100  
1.88 AC.

1200  
1.61 AC.

1300  
0.28 AC.

1400  
1.88 AC.

0190

SEE MAP 01S 10 06

01S 10 06CA

