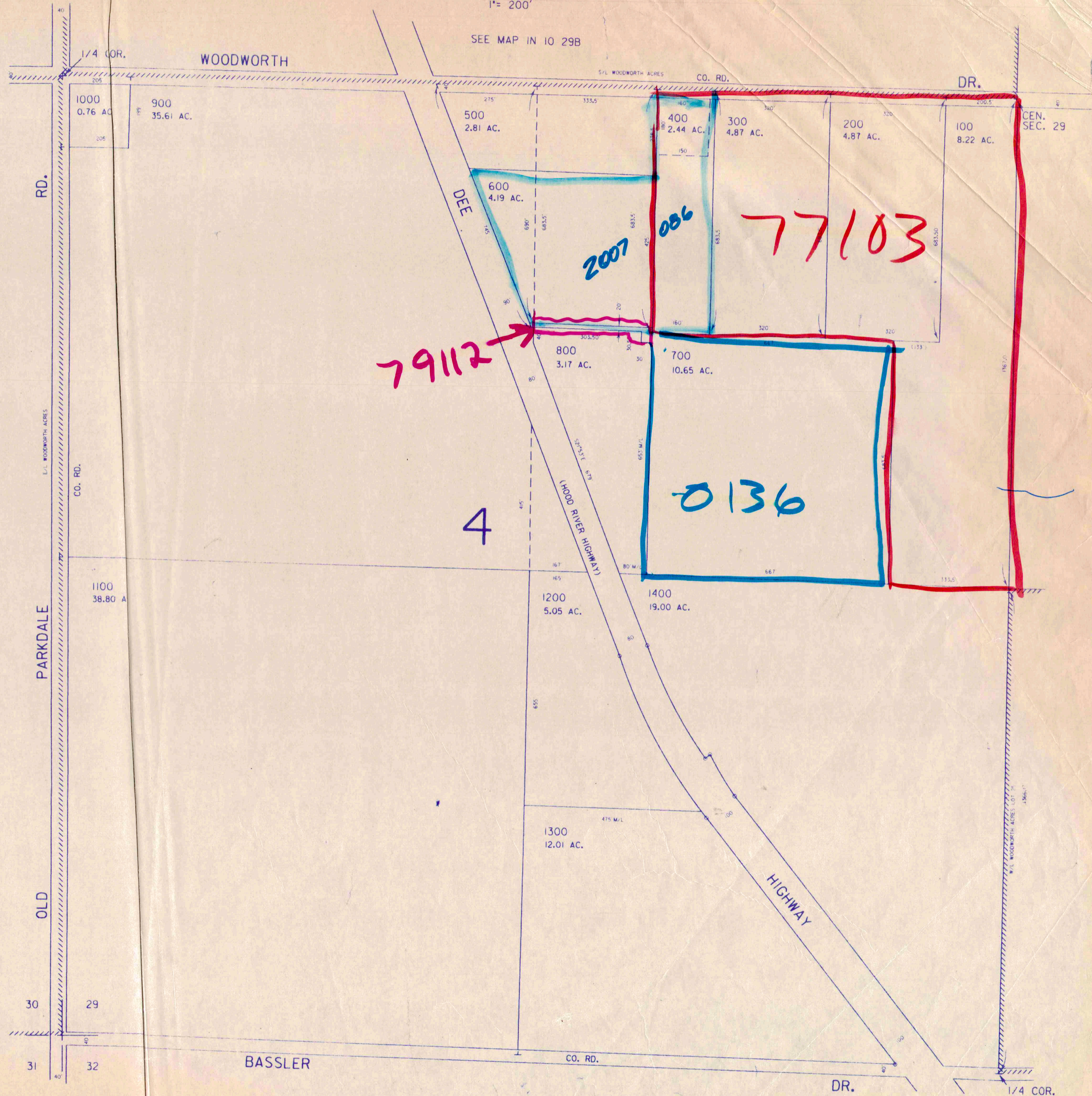


THIS MAP WAS PREPARED FOR ASSESSMENT PURPOSE ONLY

SW 1/4 SEC. 29 T.1N. R.10E. W.M.  
HOOD RIVER COUNTY

IN 10 29C

1" = 200'



SEE MAP IN 10 30

SEE MAP IN 10 29D

SEE MAP IN 10 32

IN 10 29C