

THIS MAP WAS PREPARED FOR ASSESSMENT PURPOSE ONLY

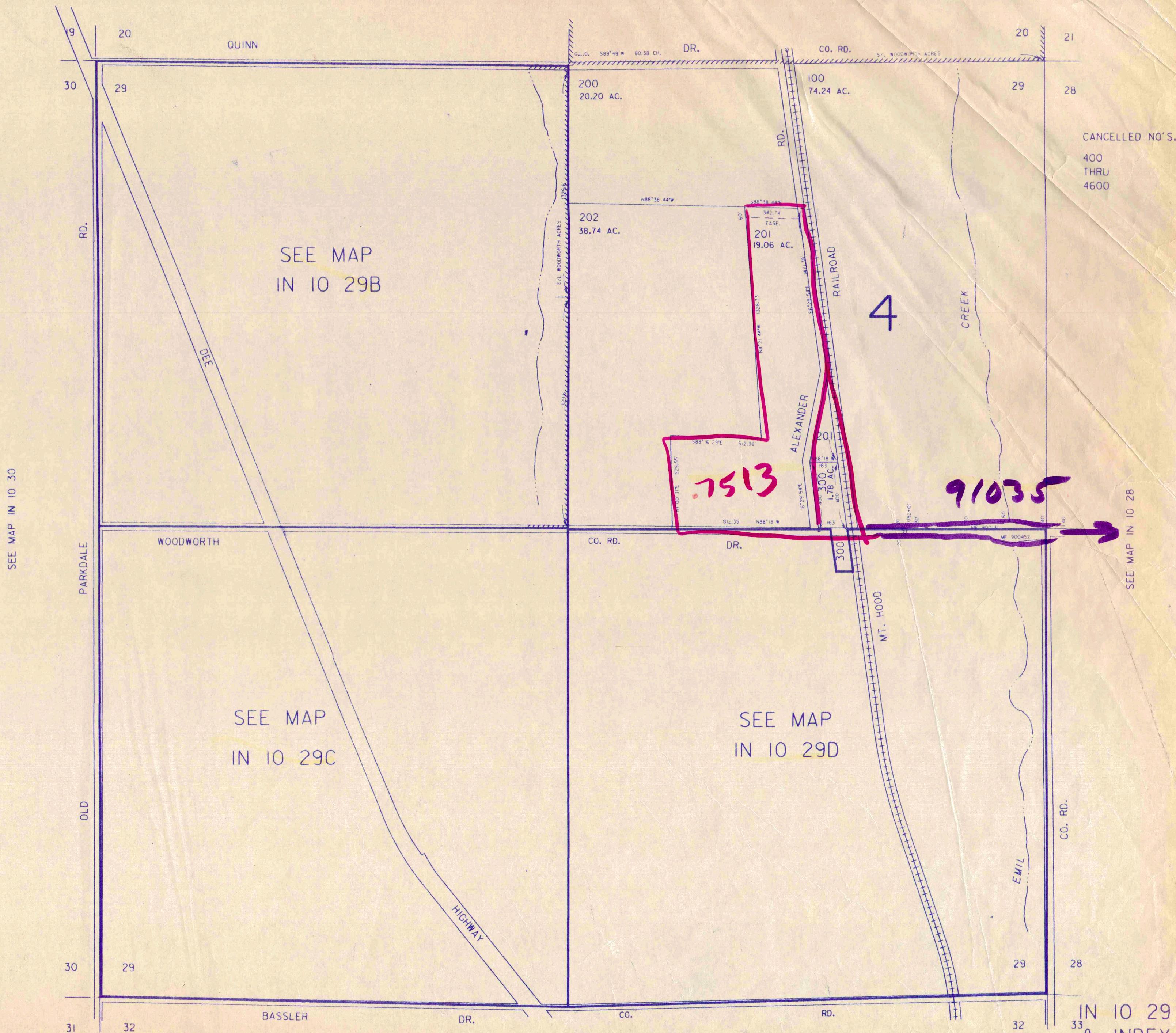
SECTION 29 T.1N. R.10E W.M.
HOOD RIVER COUNTY

1" = 400'

SEE MAP IN 10 20

see #88060 for
ODOT control
Survey in
secs. 28+29

IN 10 29
& INDEX



IN 10 29
& INDEX

SEE MAP IN 10 32