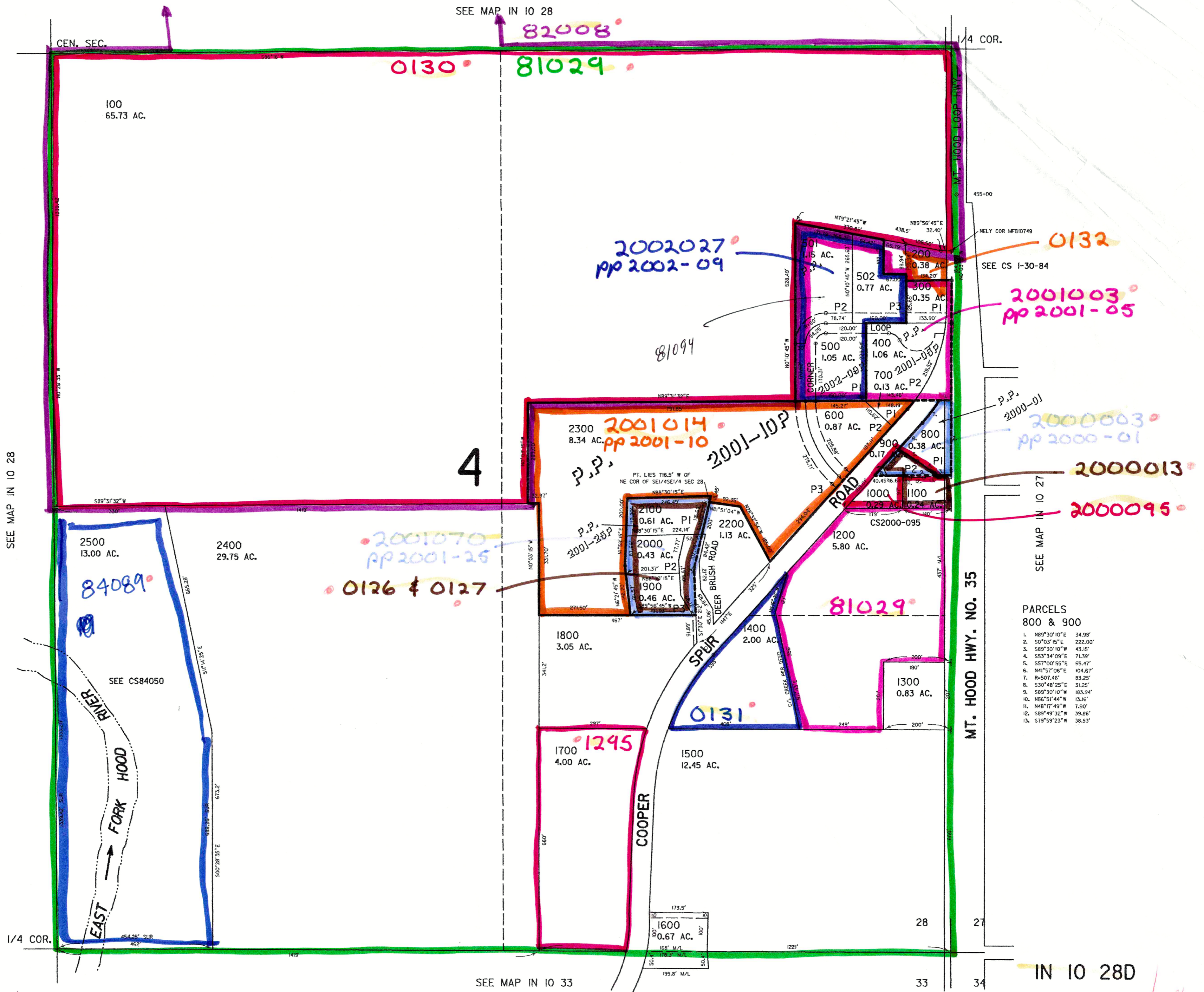


THIS MAP WAS PREPARED FOR
ASSESSMENT PURPOSE ONLY

SE1/4 SEC. 28 T.1N. R.10E. W.M. HOOD RIVER COUNTY

1" = 200'

IN 10 28D



PARCELS
800 & 900

1.	N89°30'10"E	34.98'
2.	S0°03'15"E	222.00'
3.	S89°30'10"W	43.15'
4.	S33°34'09"E	71.39'
5.	S57°00'55"E	65.47'
6.	N41°57'06"E	104.67'
7.	R=507.46'	83.25'
8.	S30°48'25"E	31.25'
9.	S89°30'10"W	183.94'
10.	N86°51'44"W	13.16'
11.	N48°17'49"W	7.90'
12.	S89°45'32"W	39.86'
13.	S79°59'23"W	38.53'

IN 10 28D

Revised
7/16/2002, JD

JD