

THIS MAP WAS PREPARED FOR
ASSESSMENT PURPOSE ONLY

SW 1/4 SEC. 22 T.10N. R.10E. W.M.
HOOD RIVER COUNTY

SEE 90080-B
FOR BREAKDOWN
OF SW 1/4

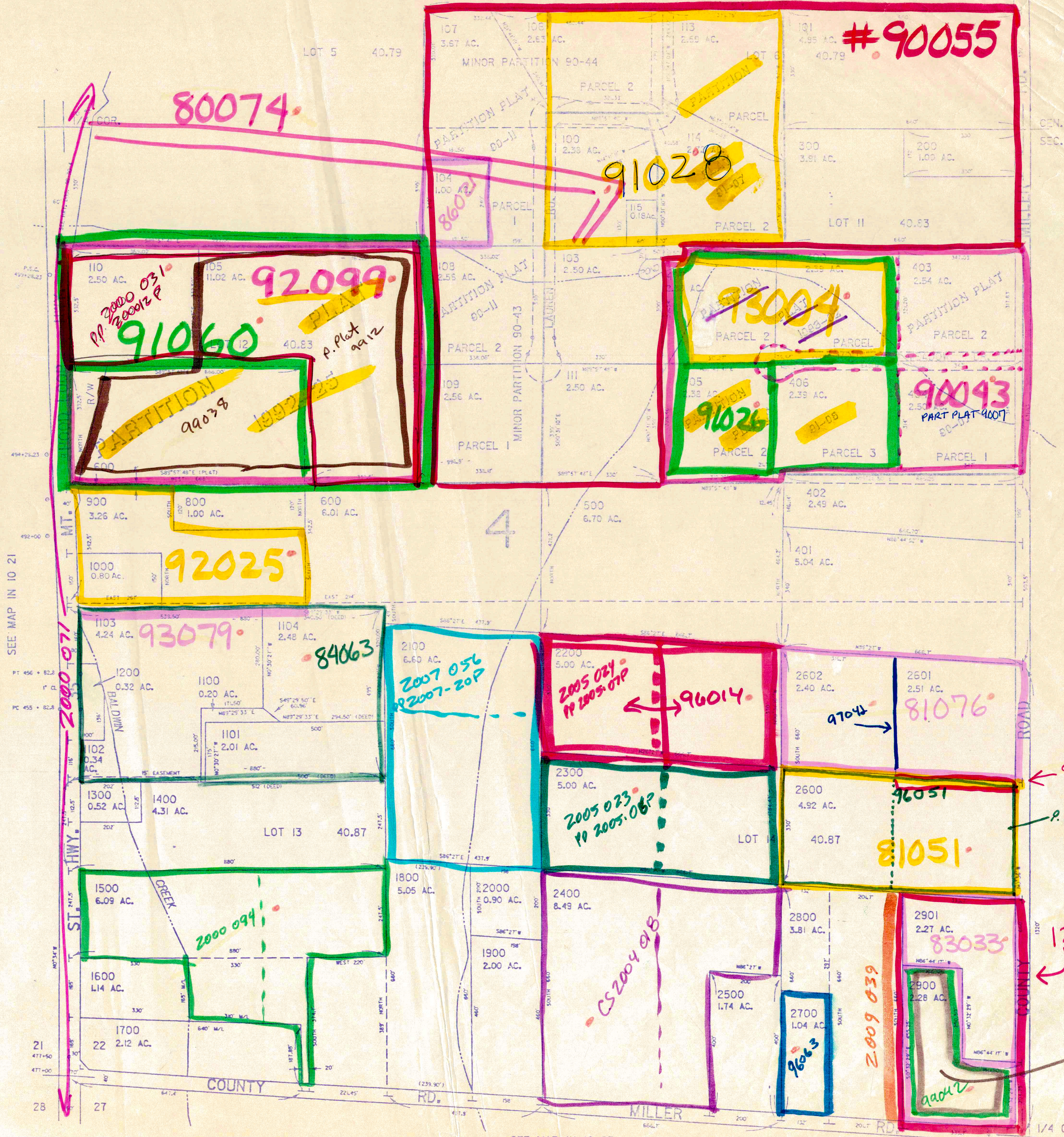
IN 10 22C

1" = 200'

SEE MAP IN 10 22B

MOST OF SW 1/4 # 0122

CANCELLED NO.'S
102
112
700
2701



SEE MAP IN 10 22

SEE MAP IN 10 21

SEE MAP IN 10 27

IN 10 22C

1/4 COR. 6/94