

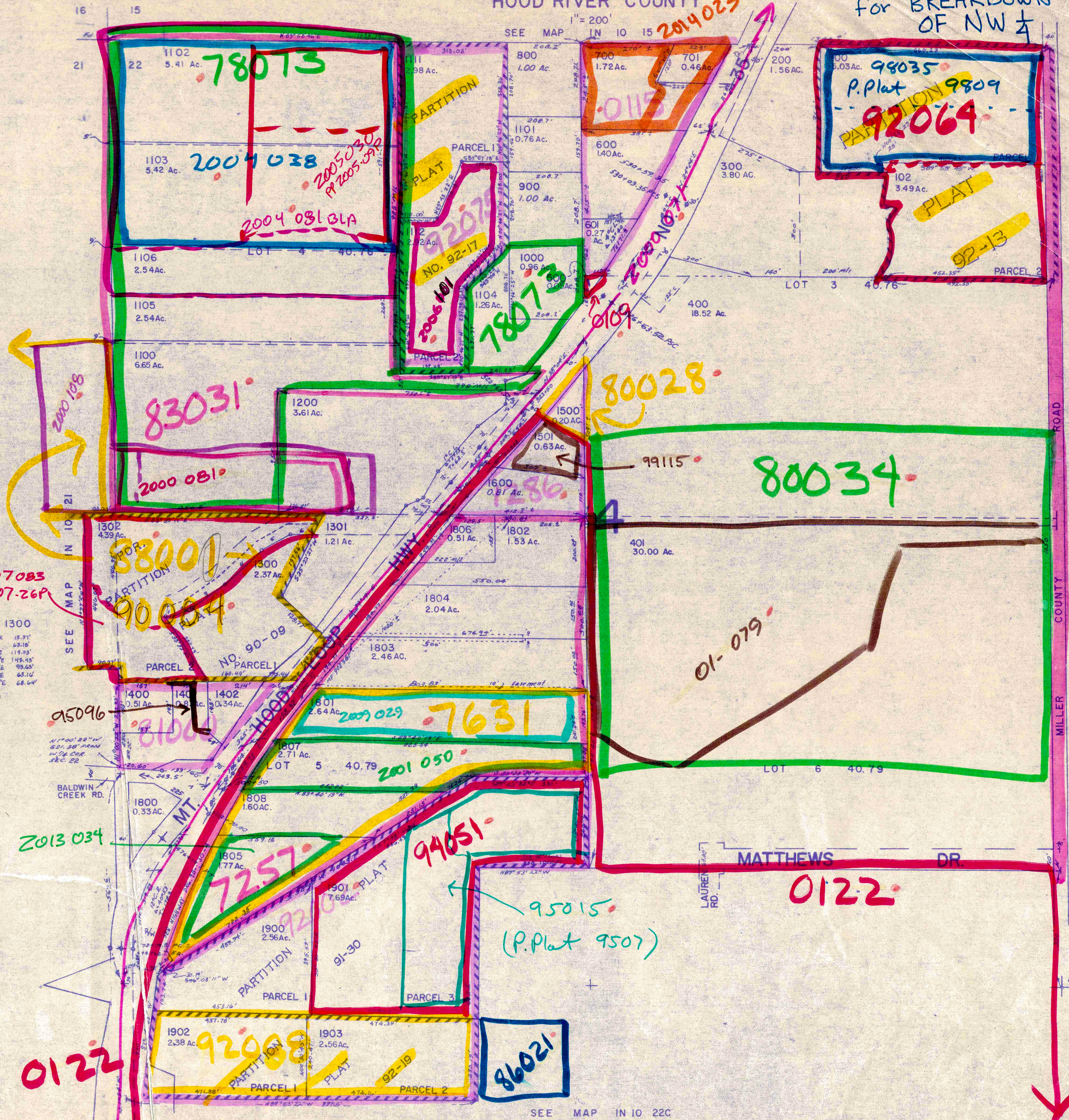
This tract was prepared for assessment purposes only

NW 1/4 SEC. 22 T. 1 N. R. 10 E. W. M.
HOOD RIVER COUNTY

SEE 90080-A
for BREAKDOWN
OF NW 1/4

IN 10 22B

Cancelled No's.
1700
499
101
1107
1109
1110
1108



PARCEL 1300
1. N89°51'42"E 15.97'
2. N40°41'17"E 63.18'
3. N54°12'55"E 119.03'
4. N45°38'59"E 142.15'
5. N60°30'31"E 93.63'
6. N80°20'11"E 63.16'
7. N15°22'21"E 68.64'

SEE MAP IN 10 22C

SEE MAP IN 10 22

IN 10 22B
6/94