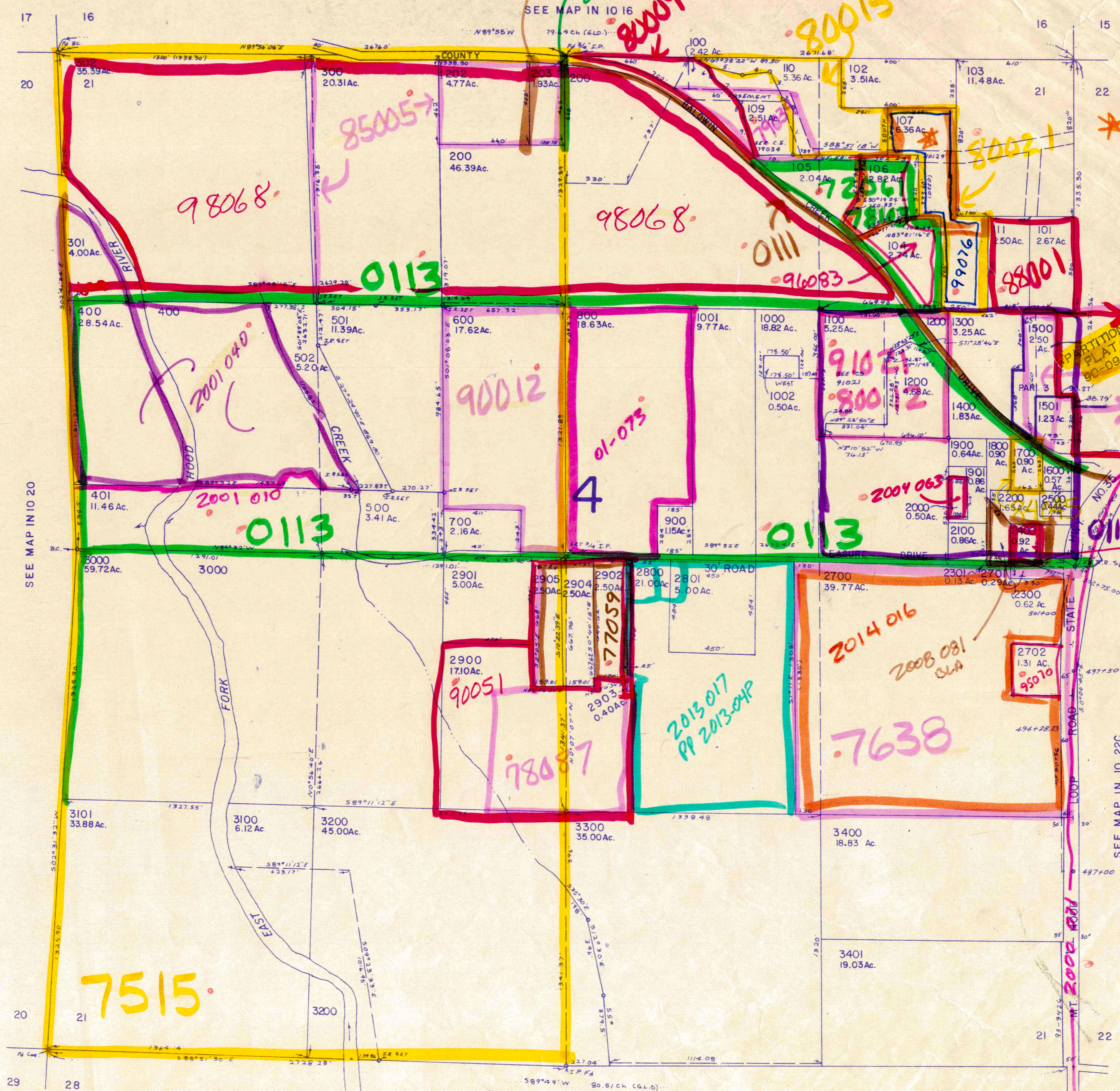


SECTION 21 T.1N. R.10E. W.M.  
HOOD RIVER COUNTY

1" = 400'



- CANCELLED NO.
- 201
  - 2600
  - 2601
  - 1902
  - 108
  - 1301
  - 1601

PARCEL 109

1. N01°08'42"W 247.40'
2. N49°53'42"W 71.82'
3. N25°48'09"W 160.03'
4. S02°21'25"W 141.09'
5. N78°11'15"W 191.35'
6. S28°14'21"E 50.30'
7. S00°17'08"E 204.83'
8. S10°23'53"E 73.08'
9. S16°05'24"E 218.87'
10. N88°51'18"E 200.81'

see (28) for  
1988 ODOT  
map of Hwy 35

17

16

16

15

20

21

21

22

301

4.00Ac.

400

28.54Ac.

401

11.46Ac.

5000

59.72Ac.

3101

33.88Ac.

20

21

29

28

SEE MAP IN IO 16

SEE MAP IN IO 28

SEE MAP IN IO 22B

SEE MAP IN IO 22C