

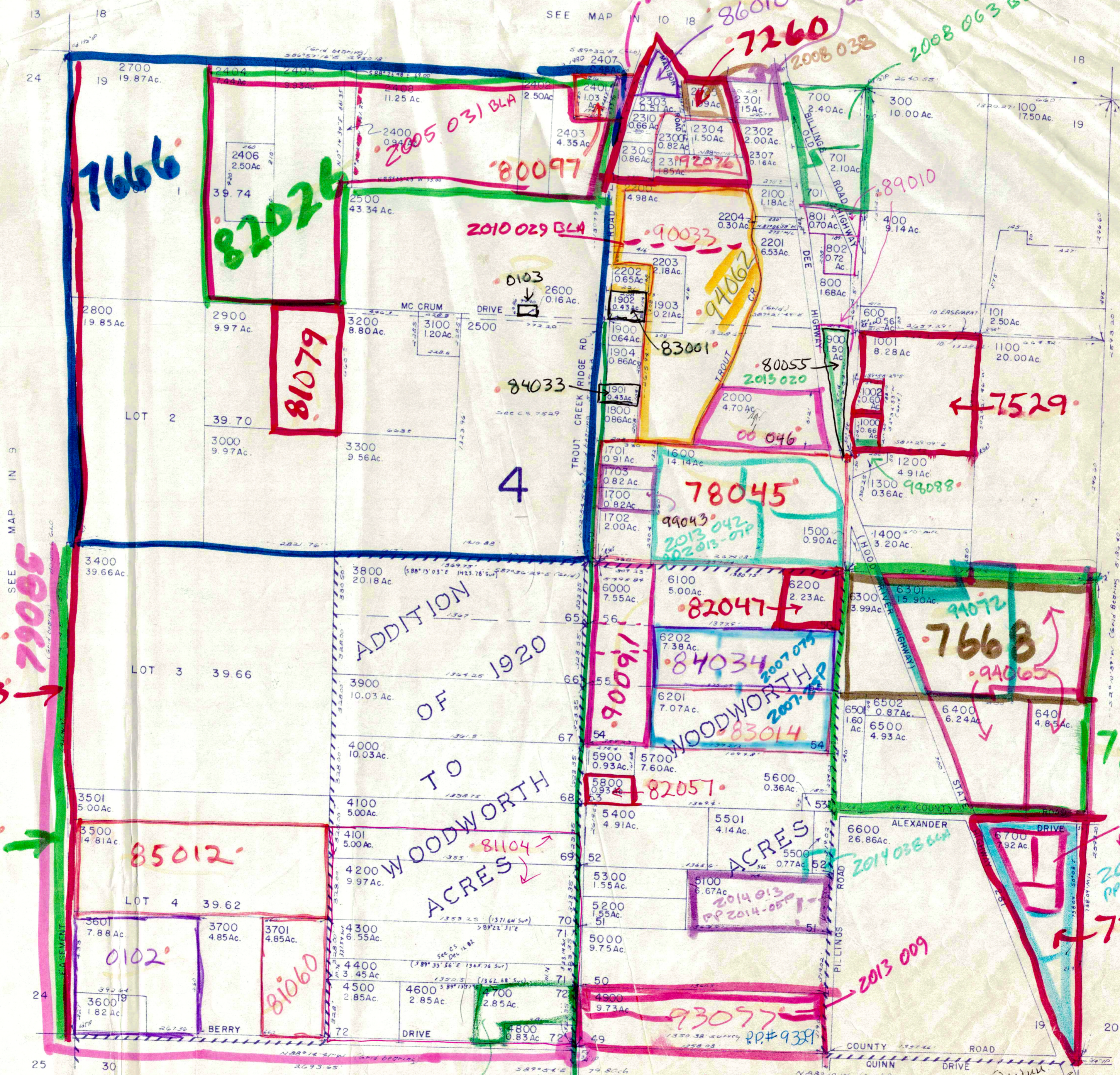
SEC. BREAKDOWN  
# 1238  
# 7528

SECTION 19 T.1N. R.10E. W.M.  
HOOD RIVER COUNTY

1" = 400'

E 1/2 Section # 78045  
W 1/2 " # 0104 (JLH)

IN 10 19



7666

82026

81079

80097

2010 029 BLA

0103

84033

4

83001

78045

7529

81043

0101

85012

0102

81060

81104

82057

ACRES

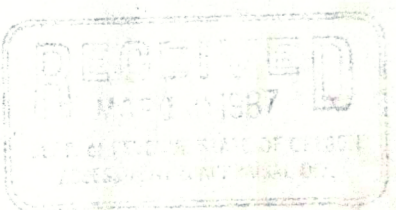
7668

78029

77017

0263

2008 075



See Quinn Rd Narrative (wo Dist)

IN 10 19