

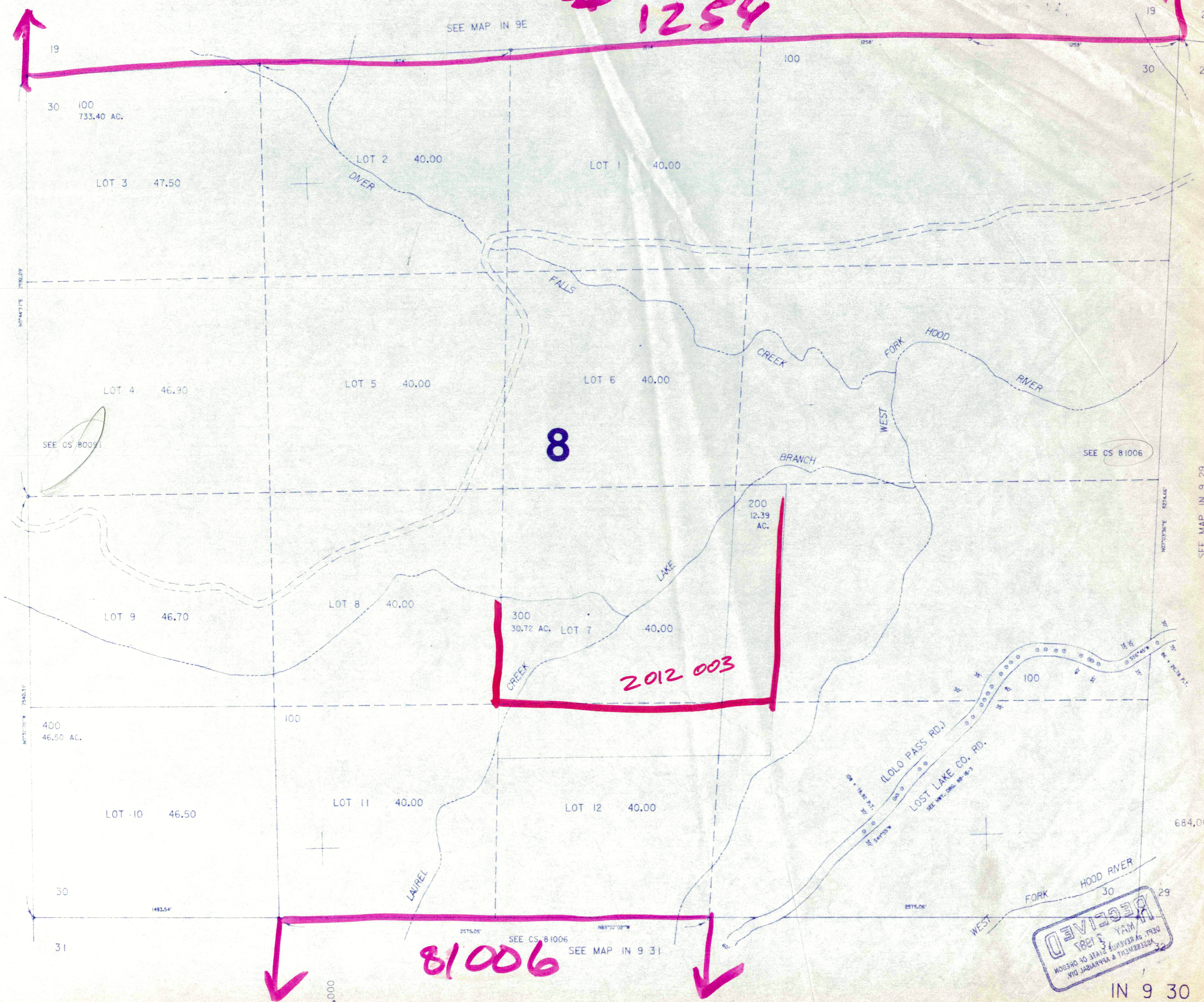
THIS MAP WAS PREPARED FOR ASSESSMENT PURPOSE ONLY

SECTION 30 T.1N. R.9E. W.M.
HOOD RIVER COUNTY

IN 9 30

1" = 400'

1254



81006

RECEIVED
MAY 3 1981
DEPT. OF REVENUE & ASSESSMENT
ASSESSMENT & REPARATION DIV.
HOOD RIVER, OREGON

IN 9 30