

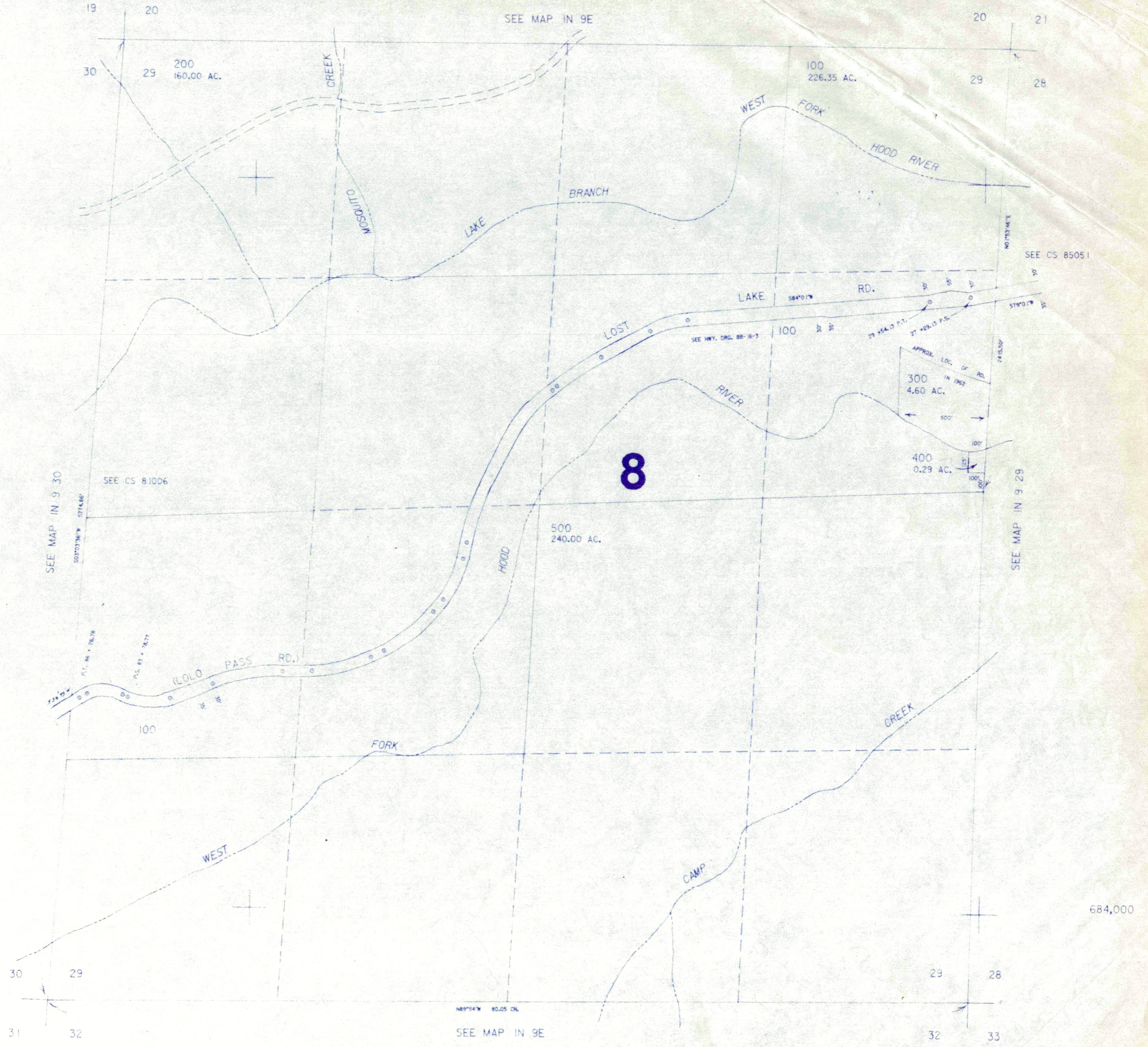
SECTION 29 T.1N. R.9E. W.M.  
HOOD RIVER COUNTY

IN 9 29

STATEMENT OF WORKING DIA  
DEPT. OF LAND AND WATER CONSERVATION  
MAY 2 1981  
RECEIVED

THIS MAP WAS PREPARED FOR  
ASSESSMENT PURPOSE ONLY

1" = 400'



684,000

1,686,000

IN 9 29