

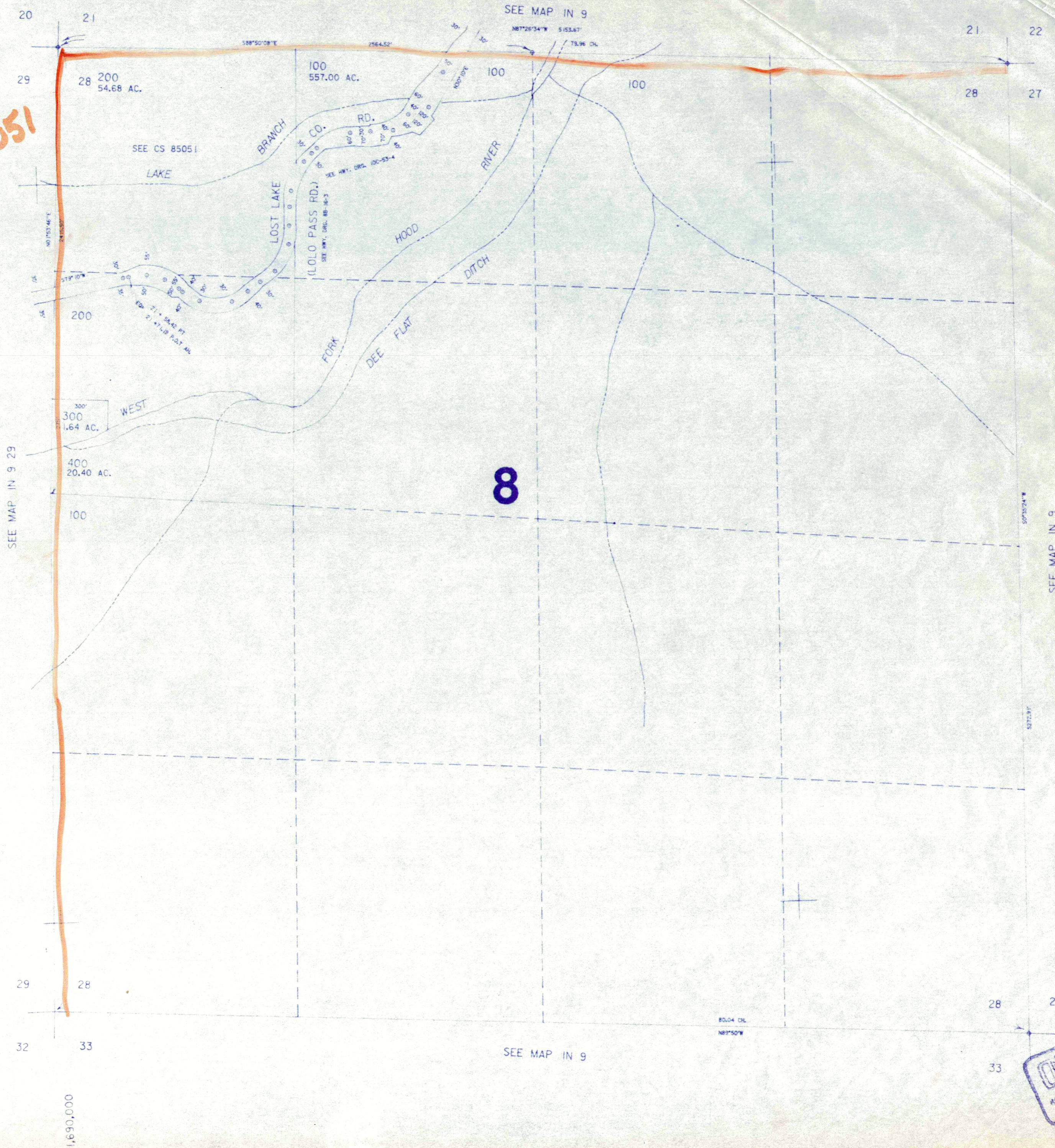
THIS MAP WAS PREPARED FOR
ASSESSMENT PURPOSE ONLY

SECTION 28 T.1N. R.9E. W.M.
HOOD RIVER COUNTY

IN 9 28

1" = 400'

1985051



RECEIVED
MAY 1985
COUNTY CLERK
HOOD RIVER COUNTY, OREGON

IN 9 28