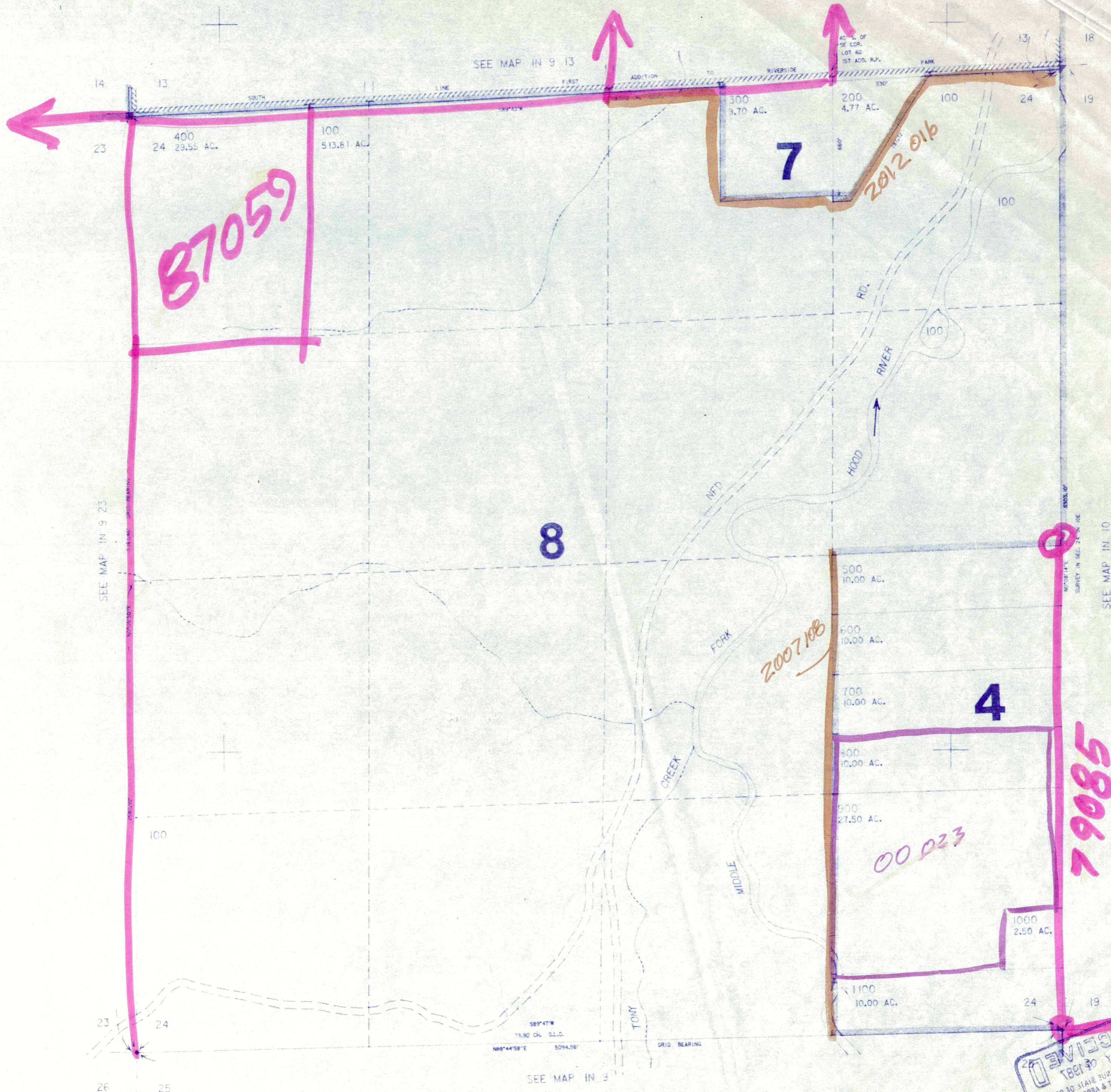


THIS MAP WAS PREPARED FOR
ASSESSMENT PURPOSE ONLY

SECTION 24 T.1N. R.9E. W.M.
HOOD RIVER COUNTY

IN 9 24

1" = 400'



87059

7

2012 016

2007 108

4

00 023

79085

RECEIVED
MAY 08 2018
DEPT. OF REVENUE STATE OF OREGON
ASSESSMENT & APPRAISAL DIV.

IN 9 24