

THIS MAP WAS PREPARED FOR ASSESSMENT PURPOSE ONLY

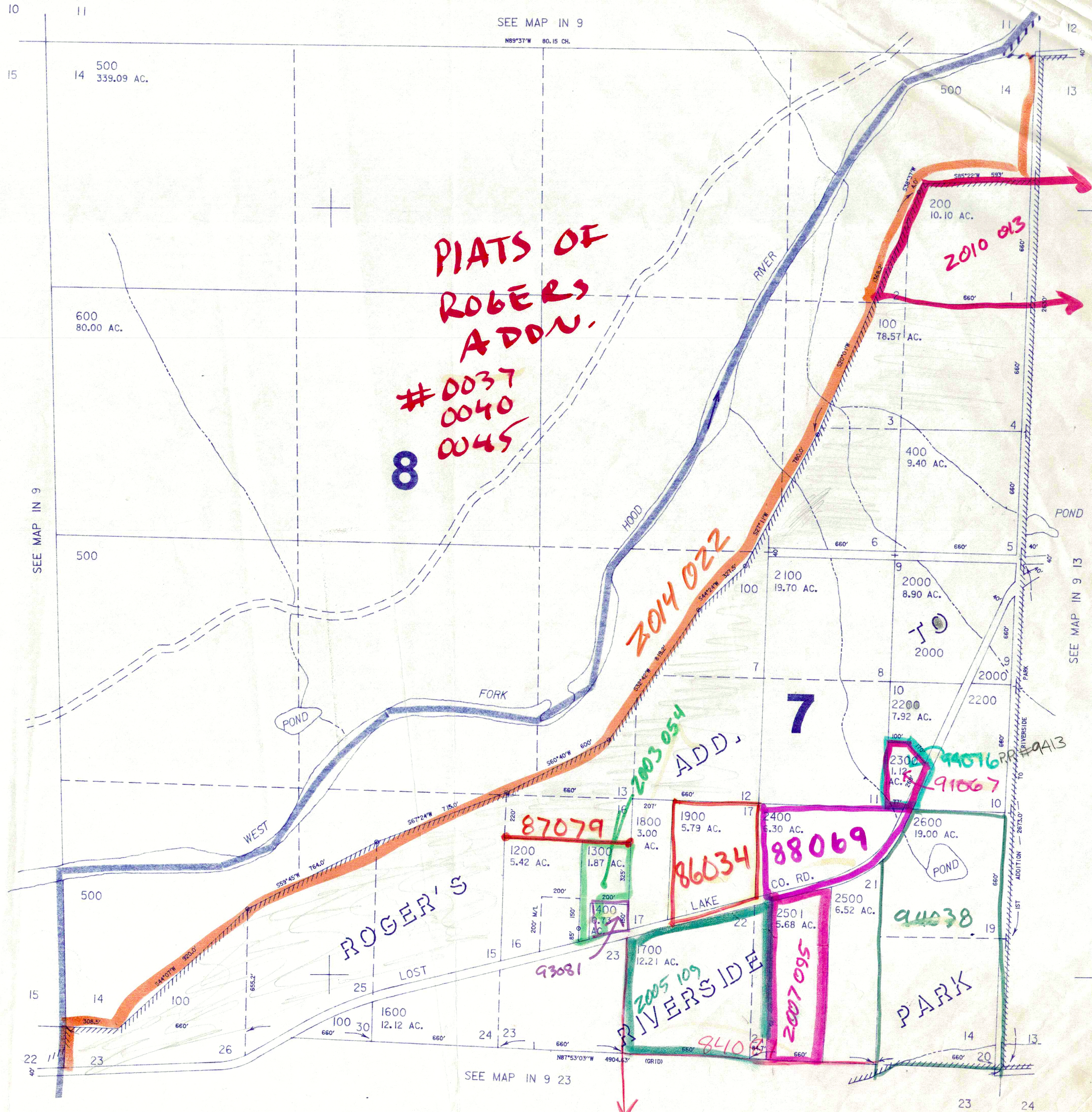
SECTION 14 T.1N. R9E. W.M.
HOOD RIVER COUNTY

IN 9 14

1" = 400'

CANCELLED NO.'S

- 101
- 102
- 300
- 700
- 701
- 800
- 900
- 1000
- 1100
- 1500



**PIATS OF
ROBERS
ADDN.**

**# 0037
0040
0045**
8

2014 022

2010 013

**2003 054
ADD.**

ROGER'S

87079

86034

88069

2005 109

2007 095

93081

94038

8410

PARK

SEE MAP IN 9 23

SEE MAP IN 9 13

SEE MAP IN 9

SEE MAP IN 9

IN 9 14

1,702,000