

SECTION 13 T.01N. R.09E. W.M.
HOOD RIVER COUNTY

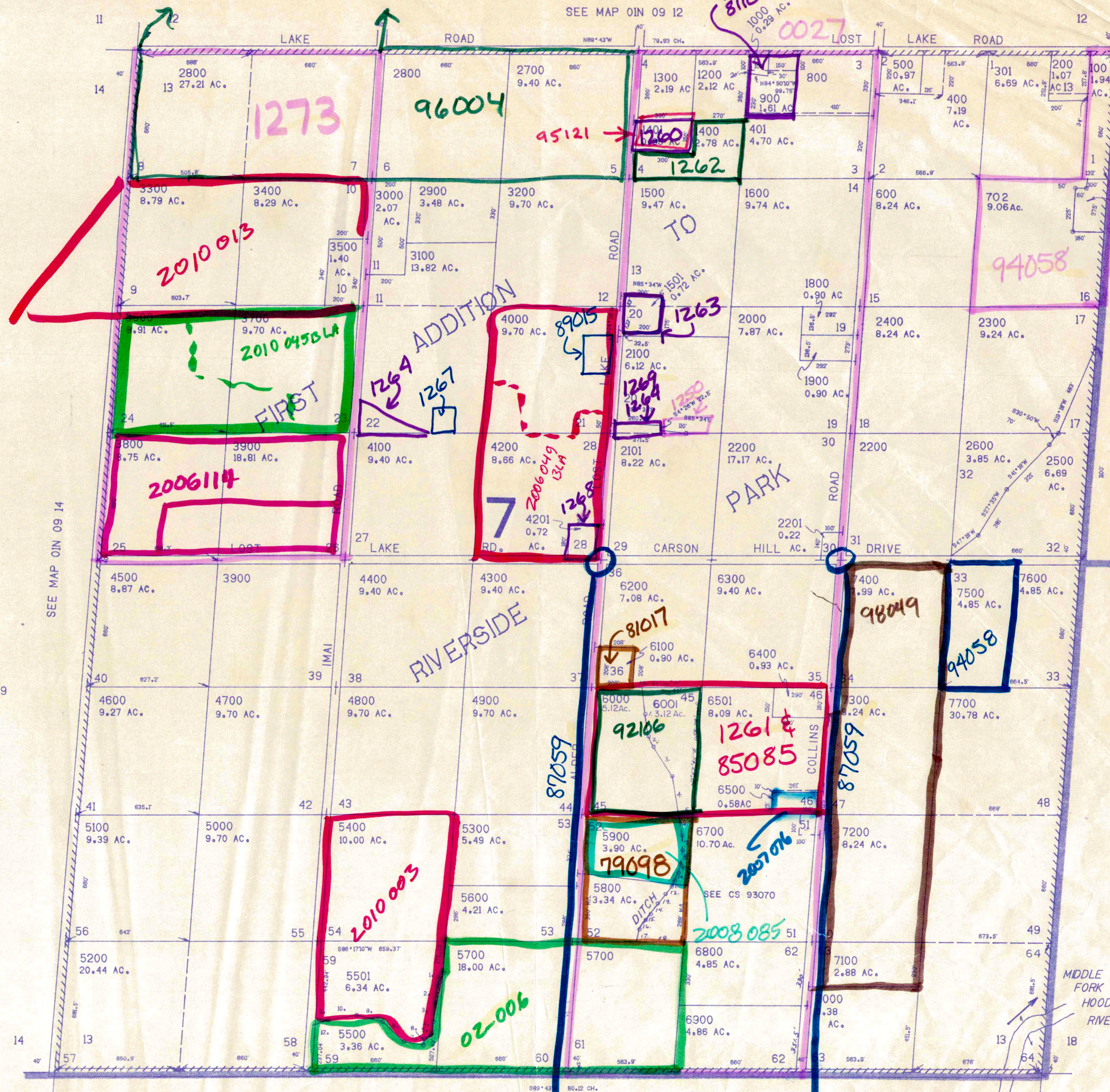
01N 09 13

THIS MAP WAS PREPARED FOR
ASSESSMENT PURPOSE ONLY.

1"=400'

CANCELLED
PARCEL NO.'S

- 300
- 501
- 701
- 901
- 1100
- 1700
- 2102
- 6502
- 6503
- 6600



SEC
BREAKDOWN
#1270

- LINE IN LOT 59
SURVEYED
1. 923°27'W 66.31'
 2. 83°23'30"W 95.06'
 3. 90°21'W 92.82'
 4. 81°05'W 66.46'
 5. 855°12'W 34.39'
 6. 811°31'W 33.91'
 7. N84°45'W 101.98'
 8. 17°W 153.15'
 9. N81°53'W 136.50'
 10. S77°16'W 142.84'
 11. S68°05'W 68.42'
 12. S69°10'W 35.82'

- PARCEL 6001
1. S10°54'49"E 252.99'
 2. S23°03'55"E 57.18'
 3. S34°06'30"E 180.55'
 4. S19°42'52"E 202.01'
 5. N84°35'57"E 70.50'
 6. S14°57'12"E 112.78'
 7. S 2° 1' 6"E 75.76'
 8. S 6° 10' 58"W 70.50'
 9. S 10° 24' 51"W 44.10'
 10. S 16° 19' W 44.19'
 11. S 22° 57' 23" W 30.36'
 12. S 34° 07' 37" W 52.52'
 13. S 36° 12' 32" W 63.43'
 14. S 38° 40' 5" W 74.96'
 15. S 39° 0' 33" W 43.07'
 16. S 27° 41' 8" W 51.92'
 17. S 16° 21' 6" W 64.56'
 18. N 86° 28' 34" E 255.20'

87059 see IN 9 24

01N 09 13