

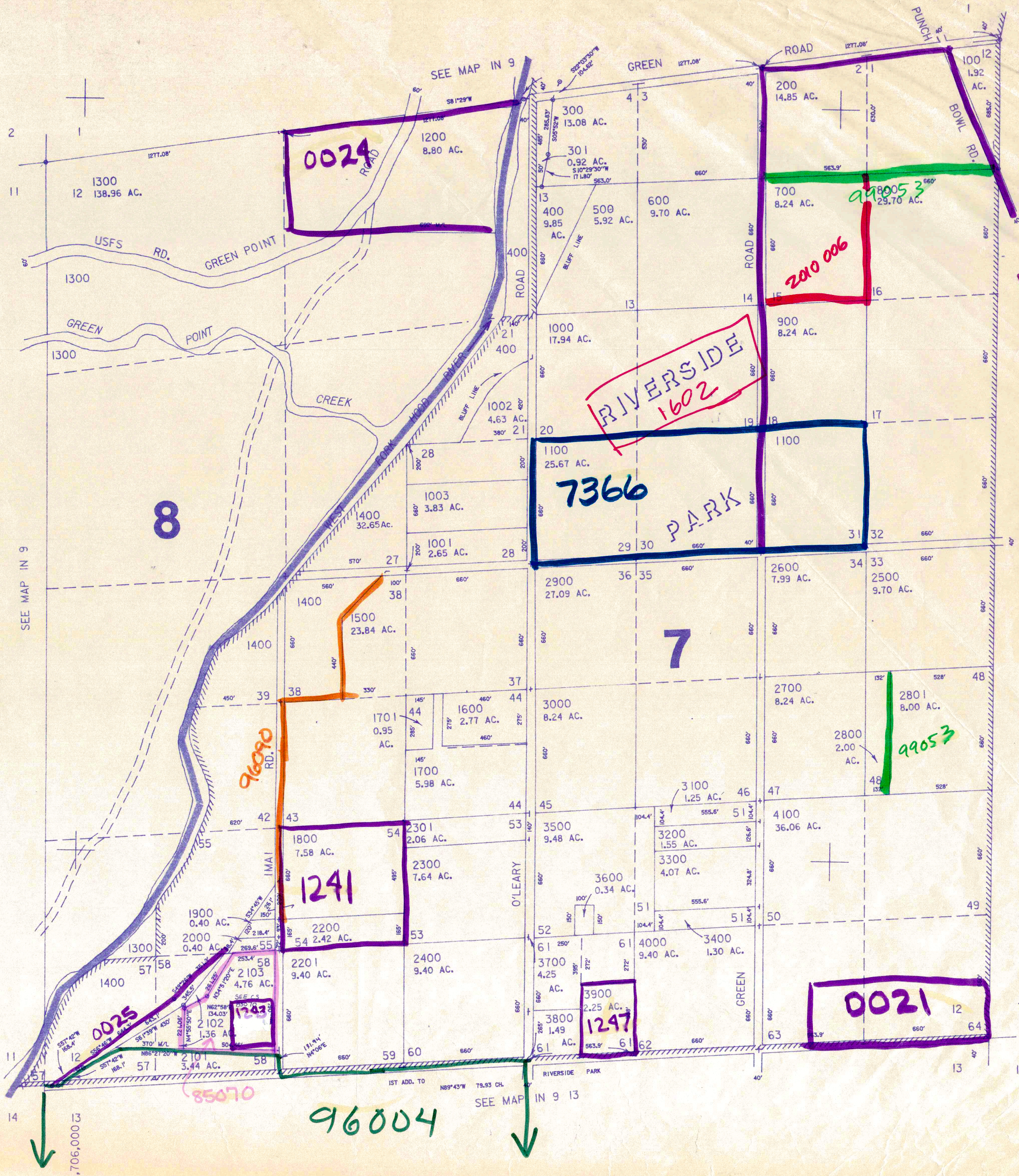
THIS MAP WAS PREPARED FOR ASSESSMENT PURPOSE ONLY

SECTION 12 T.1N. R.9E. W.M. HOOD RIVER COUNTY

1" = 400'

E 1/2 SEC. # 0023

IN 9 12



0076
CANCELLED NO'S
2100

88029

1266

RIVERSIDE
1602

7366
PARK

SEE MAP IN 10 7

700,000

0021

96004

SEE MAP IN 9 13

IN 9 12