

PIPELINE R.O.W.  
OREGON STATE HATCHERY  
0002

THIS MAP WAS PREPARED FOR  
ASSESSMENT PURPOSE ONLY

SECTION 1 T. 1N. R. 9E. W.M.  
HOOD RIVER COUNTY

1" = 400'

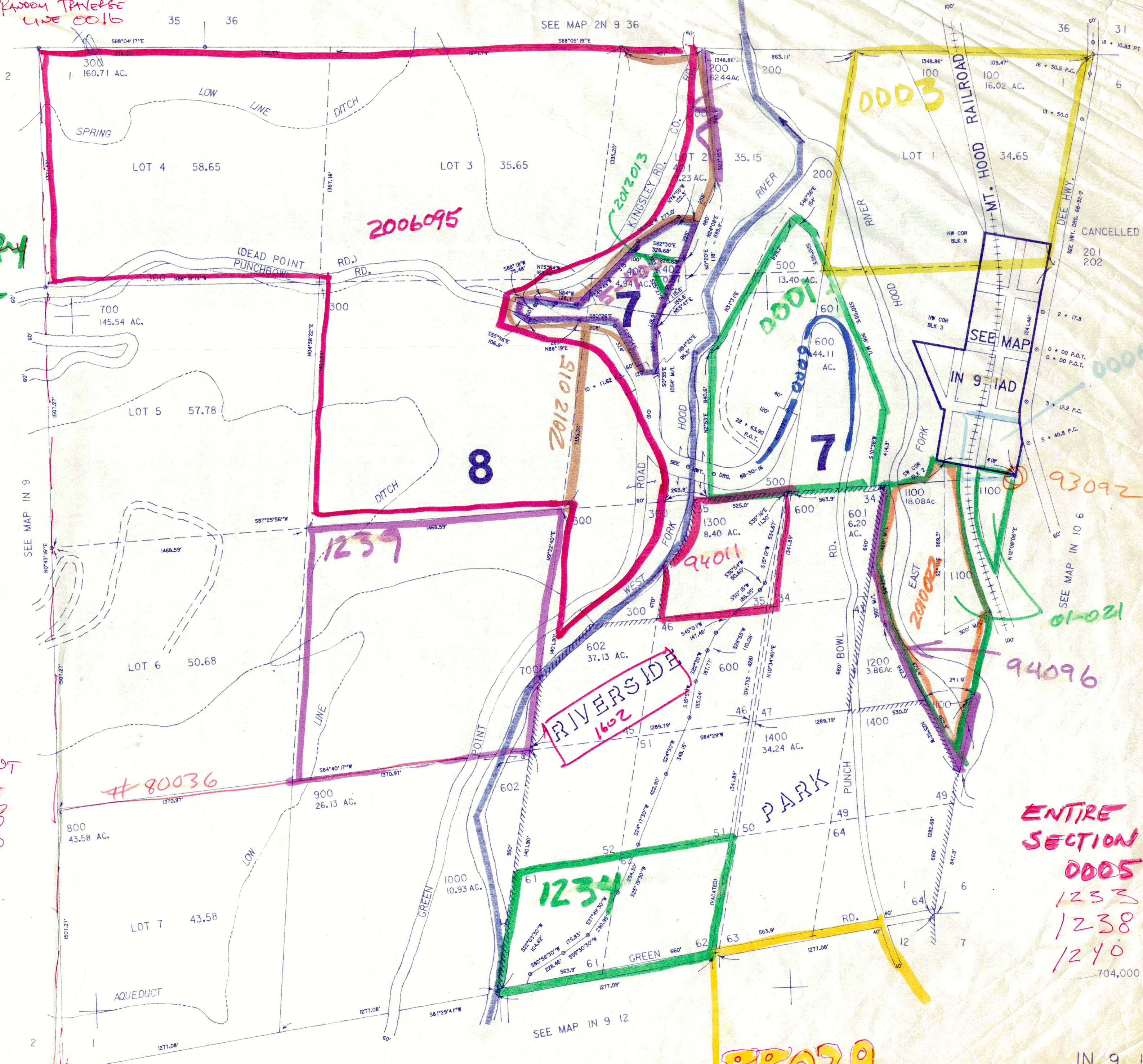
Handwritten: Frey Sec. Breakdown #0004  
see also #1238

IN 9 1  
& INDEX

Handwritten: PADDY TRAVELER  
LINE 0016

SEE MAP 2N 9 36

FISH  
HATCHERY  
0007



Handwritten: GREEN POINT  
BRIDGE  
0008  
0010  
0011

Handwritten: #80036

ENTIRE  
SECTION  
0005  
1233  
1238  
1240  
704,000

Handwritten: 88029

IN 9 1  
& INDEX