

87059

FILED

OCT 4, 1987

Richard G. Arnold
COUNTY SURVEYOR

TERRA SURVEYING
P.O. BOX 617
Hood River, Or. 97031

LEGAL DESCRIPTION
for
LONGVIEW FIBRE COMPANY TIMBERLANDS
SURVEY NARRATIVE
SECTION 24, TOWNSHIP 1 NORTH, RANGE 9 EAST

SEPTEMBER, 1987

PROJECT 8733

TERRA SURVEYING commenced with the purpose of outlining a 30 acre parcel owned by Hood River County in the Northwest corner of the section. The survey proceeded by checking the public records for the usual written information.

TERRA found a survey of record by TENNESON ENGINEERING CORP. (TEC) which was filed on April 29, 1969, under TEC work order number 3737. The survey listed Hood River County as the client. TERRA was prepared to accept the survey and its findings after verifying a few corners and the called distances between them.

The first traverse was started at a Frey brass cap accepted as the Section corner common to Sections 13, 14, 24 and 25. We ran Westward to an accepted brass cap at the corner common to Sections 14, 15, 22 and 23. Our Compass adjusted ground distance was 4941.50 feet while the TEC grid distance was 4904.64 feet. This discovery caused serious questions to arise about the validity of the survey since a number of GLO corners had been single and double proportioned using these two known and accepted corners.

TERRA then began to search for more evidence which could help establish the West and North lines of Section 24. The FIRST ADDITION TO RIVERSIDE PARK PLAT was consulted and a 1 1/2 inch iron pipe was tied on the North line of the section and identified as the corner between Lots 58 and 59. We then located two other known and accepted 1 1/2 inch pipes in the subdivision. These two pipes appeared to be of the same type, size and age as the first pipe. TERRA therefore accepted the found pipe as the lot corner even though it placed an angle point in the North line of the section.

TERRA contacted Mr. Roland Lewis of 5690 Alder Drive, Hood River, Or. Mr. Lewis had worked for the Oregon Lumber Company which

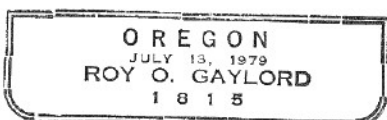
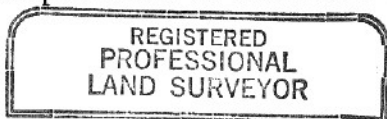
sold its lands through a chain of sales to LONGVIEW FIBRE. Mr. Lewis began working the woods in this area during the late 1930's eventually retiring from then CHAMPION TIMBERLANDS with the job title of Logging Manager. He has resided at the above address since the 1950's when he purchased the farm from his wife's parents. At the time of his retirement, he was responsible for property line locations and the preservation of existing property corners. According to Mr. Lewis's neighbors and friends he is a man of sound mind and high personal integrity, a person highly respected in the community.

TERRA consulted with Mr. Lewis about the section corner common to Sections 23, 24, 25 and 26. We told him of the TEC Survey and of that particular corner being double proportioned. He said that he had been to the corner and Mr. Frey had monumented the corner. We then asked Mr. Lewis to show us about where the section corner was located. He directed us up Steam Pot road and said it was at the bottom of the draw about 100 feet either East or West of where we had stopped. We search the area and found the Frey cap and confirmed the North-South location by a GLO creek call one chain West. TEC had not set a monument at their calculated position nor mentioned why they ignored the Frey monument.

TERRA went back to Mr. Lewis after this success and ask about the Quarter corner common to Sections 23 and 24 since that corner had also been proportioned by the TEC survey. Mr. Lewis said that corner also existed and gave us directions to locate it. We calculated a corner position using the found section corner and Mr. Lewis's directions and found the Fry monument. Southwest of this corner we found a 1/4 bark scribed on an old snag stump, (much older than the Frey monument), which appeared to reasonably confirm Frey's corner location. TEC had not set a monument at their calculated position nor mentioned why they ignored this Frey monument.

Mr. Lewis said these two corners had been used by Oregon Lumber Company and recognized by the local community as being valid corners as monumented by Frey. TERRA made the decision to accept the three Frey corners as the best evidence of corner locations for the various reasons stated above. The TEC Survey was disregarded for the following reasons.

- (1) A blunder in distance was discovered in the one section line.
- (2) No corners were set at the calculated GLO positions.
- (3) No reasons were given in the TEC Narrative why the Frey corners were not used.
- (4) A Creek call 15 chains away was used to help double proportion a section corner.



Sincerely,

A handwritten signature in cursive script, appearing to read "Roy O. Gaylord".

Roy O. Gaylord, PLS