

RECEIVED  
DATE 1/14/74

FIELD NOTES:

A survey for HOOD RIVER SHELTERED WORKSHOP of a tract of land in the N.E. 1/4 of the S.E. 1/4 of the S.E. 1/4 of Section 24, T. 2 N., R. 10 E., W.M., Hood River County, Oregon.

CREW: David L. Tuttle, Party Chief.  
Robert Wiggin, Transitman.  
Robert Ulrich, Chainman.

REFERENCES: Hood River County Surveyor's Section Corner Reference file.  
T.E.C. W.O. #2594.  
Hood River Quadrangle Map.

DATE COMPLETED: December 13, 1973.

On December 5, 1973, our firm was retained by Mrs. Judy Drescher, representing the Hood River Sheltered Workshop, to survey Tax Lot 4501, in Section 24, T. 2 N., R. 10 E., W.M., Hood River County, Oregon.

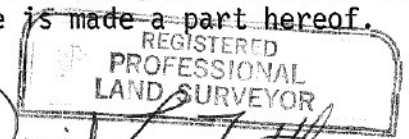
Before commencing the survey we researched the County Surveyor's Section Corner Reference files for those corners of record in the area. Copies of reference material were obtained and used in the field to aid in the search and verification of those corners necessary to carry out the survey. Those corners found, verified, and used during the course of this survey are as follows: The south 1/4 is monumented with a 1" pipe, buried approximately a foot deep in a pear orchard and referenced by a County Reference poster attached to a power pole. The S.E. corner of Section 24 is a bolt set about 2" below the paved surface of Thompson Road, and referenced with a County Poster. The east 1/4 is located at the intersection of two county roads. Due to the excavation necessary to recover this monument and the winter conditions of the roadway, it was not uncovered. Its position was established by intersecting lines drawn between four found reference nails. Its position on the road surface was monumented with a railroad spike. The west 1/4 corner is monumented with a 1" axel and referenced by a County Reference Poster on a fence post.

Commencing the survey at the S.E. corner of the section, we established a true line to the east 1/4 corner. The distance was measured with a Hewlett Packard Distance Meter and the 1/16 corner was established mid way between the two corners. Angles were turned to the south 1/4 corner and the west 1/4 corner, in order to properly subdivide the section. From the 1/16 corner we had established, the remainder of the survey was carried out in accordance with deed calls. (That being the N. 300 ft. of the S. 600 ft. of the E. 435.6 ft. of the N.E. 1/4, S.E. 1/4, S.E. 1/4 of Sec. 24.) As requested, just the south line was set.

All corners set are 3/8" iron rods except for a railroad spike placed along the centerline of Thompson Road to mark the projected lot line intersection. All distances were measured electronically. Corners found and established in the course of the above survey, together with measured bearings, distances and ties, are shown on the attached map, T.E.C. work order #5022, which by reference is made a part hereof.

Signed

*David L. Tuttle*  
David L. Tuttle, Oregon Land Surveyor #872



CHECKED AND APPROVED:

Tennessee Engineering Corporation  
*Donald J. Branton, FOR*  
Donald J. Branton, President

#7514

