

①

Survey William S. Neal Property

Sec 9 T2N, R10E, W1M

NE Corner ~~4 13~~
Section 9 9 10

Brass Marker located
in the intersection Bennell Rd
and Markham lane

East 1/4 Corner ~~9 10~~
Section 9

Brass Marker intersection
Portland Way Hayes Rd
(in Mom Case)

North 1/4 Corner ~~9 10~~
Section 9

Brass Cap intersection
County hwy and Rockford
Rd.

Starting @ N.E. Corner
Section 9

2092 feet

Set Temp Turning Point
① Turned on Bearing
S 89° 10' 43" W

On East Section
line TTPO

Party
G Parth Just
M. Parth Chain

Corner # 457

Corner # 562

Corner # 558

See
Tub
Sched
Tub
Tub

F I L E D

AUG 14 1973

By Carol Ann Elberg #11339
COUNTY SHERIFF
DEPUTY

Survey William S Neal Property
3/24/73 *[Signature]*

Temp Turn Point ①
On East Section line

30°- feet

Set 2'x2' Wood

W.U. (N.E. Corner)

30° feet west on Bearing

N 89° 10' 43" W from East Section Line

179°- feet

Set 2'x2' Wood

W.U. (N. Central Corner)

209° feet west on Bear

N 89° 10' 43" W from East Sec Line

TTP ①

236⁵⁰ feet

TTP ②

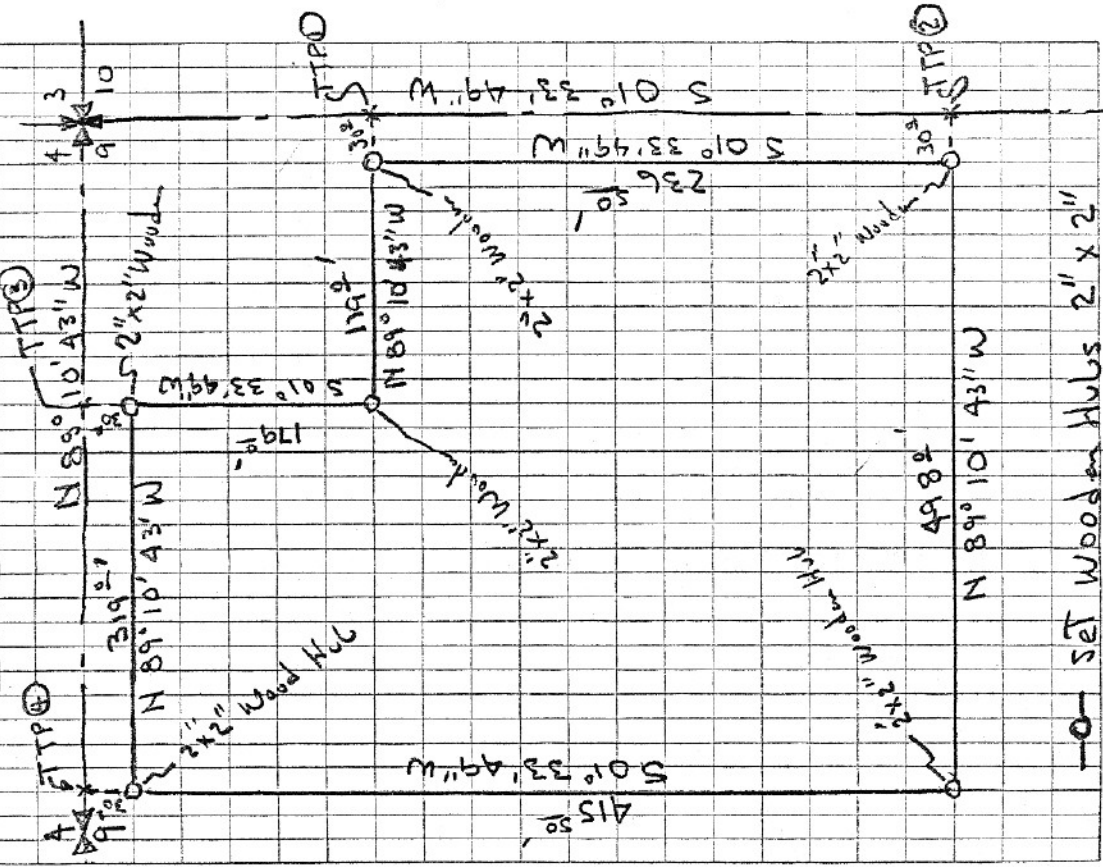
Set Temp Turn Point ②

on East Section line

236⁵⁰ feet South of

TTP ① Bearing from TTP ① 501° 33' 49" W

Section A T 2 N R 10 F W M



TTP ②

30⁰ feet

Set 2"x2" Wood Hub

(S.E. Prop Corner)

Set S.E. Prop Corner 30⁰ feet
West on Bearing N 89° 10' 43" W

498⁰ feet

Set 2"x2" Wood Hub
(S.W. Prop Corner)

Set S.W. Prop Corner 528⁰ feet
West of East Section line
on Bearing N 89° 10' 43" W

N.E. ~~804~~ Sec. 9

209⁰ feet

Returned to N.E. Corner
Section 9

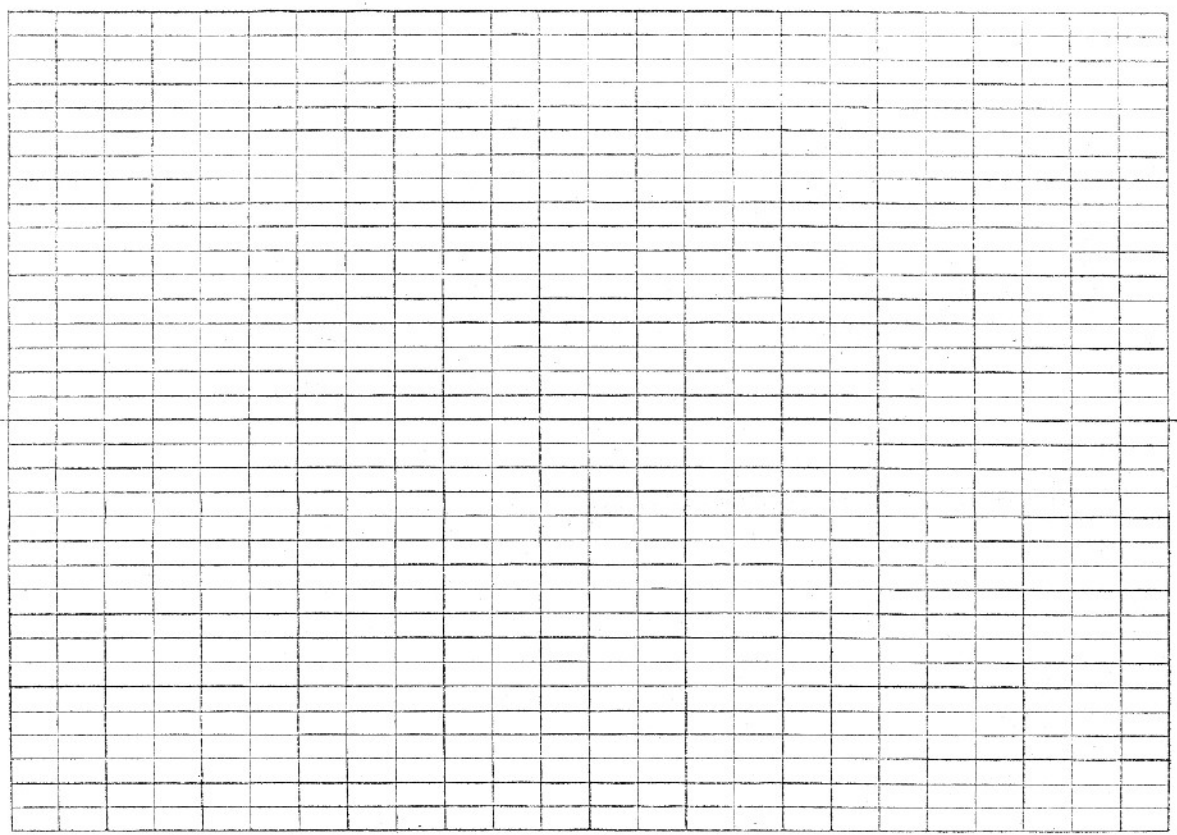
TTP ③

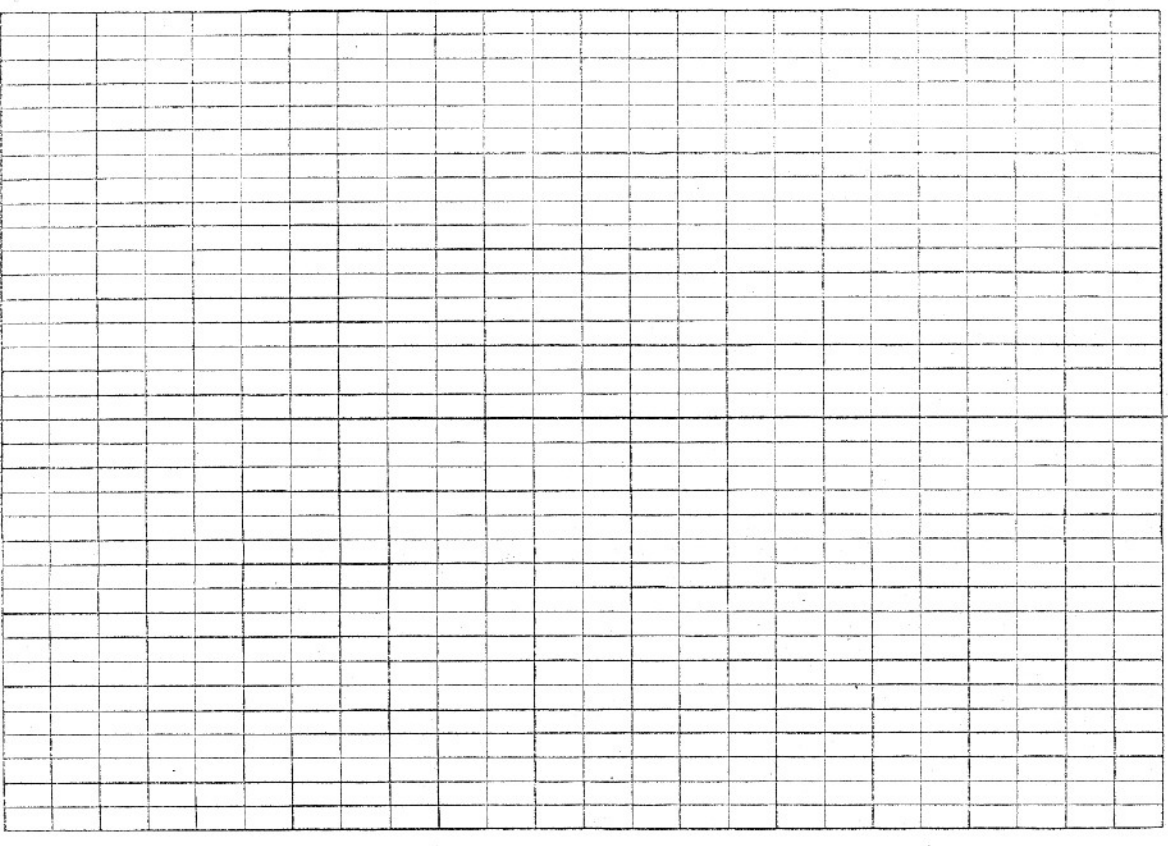
30⁰ feet

Set TTP ③ on Bearing
N. 89° 10' 43" W from
N.E. ~~804~~ Sec. 9

Set 2"x2" Wood Hub
(N Central Prop Corner)

Set N Central Prop Corner
on Bearing S 01° 33' 49" W
South of North Section line





TTP ③

319⁰ feet

TTP ④

Set TTP ④ on Bearing
N. 89° 10' 43" W from
TTP ③

30⁰ feet

Set 2"x2" Wood
Hub N.W. Prop
Corner

Set N.W. Prop Corner
on Bearing S. 01° 33' 49" W
South from TTP ④

1513
142
Ward

Aug 6 1973

Carlos Van Elsterg
Director of Public Works
Hood River County
Hood River Oregon
97031

Subject: Field Note William S. Neal
Section 9 T2N R10E W. 1/4

Dear Mr Van Elsterg

Please find enclosed copy of
Field Notes as requested.

Sincerely,
Your
Sam Paul
P.O. Box 297
Steverson WA