

Engineering

Surveying

Data Processing

**Dielschneider
Associates Inc**

No. 8 Fourth St. Hood River, Oregon 97031

Phones: Hood River 503/386-2912, The Dalles 503/296-3721



March 18, 1971

Carlos Van Elsberg, Director
Department of Public Works
Hood River County
P. O. Box 457
Hood River, Oregon 97031

Subject: U. S. Plywood - Harry Ketchum
Project No. 7033

Field Notes: U. S. Plywood - Harry Ketchum
Project No. 7033

Survey North Section line, Section 18, Township 1 North, Range
11 East of the Willamette Meridian.

Crew: Ed Vincent, Party Chief
Elmer Wilson, Chainman
Hood River County Tellerometer Crew

Dates performed: June - July 1970

Weather: Hot

In June of 1970, our firm was retained by Harry Ketchum and Steve Nance of U. S. Plywood to establish the North Section line of section 18, Township 1 North, Range 11 East of the Willamette Meridian. The Northwest Section corner, North Quarter corner and the Northeast Section corner of said Section 18 have been lost. The re-establishment of these corners was done by the following method: The West Quarter of Section 18 and the Northwest Section corner of Section 7 were recovered. The Northwest Section corner of Section 18 was established by single proportion between these corners. This position was tied into the recovered North Quarter corner of Section 13, Township 1 North, Range 10 East of the Willamette Meridian. Distance checked G.L.O. within 1.5' South position of the Northwest Section corner was held as calculated. The Northeast Section corner was double proportioned between the East Quarter corner of Section

Carlos Van Elsberg, Director
Hood River County Dept. of Public Works
March 18, 1971

18 and the Northeast Section corner of Section 7, Township 1 North Range 11 East of the Willamette Meridian, and from the Northwest Section corner and North Quarter corner of Section 17, Township 1 North, Range 11 East Willamette Meridian. The North Section line of said Section 18 was then run in the Field and the one/sixteenth corners set. Corners found and set are so noted on the survey map, together with G.L.O. distance per Government notes.

I certify that this work was done under my direct supervision.

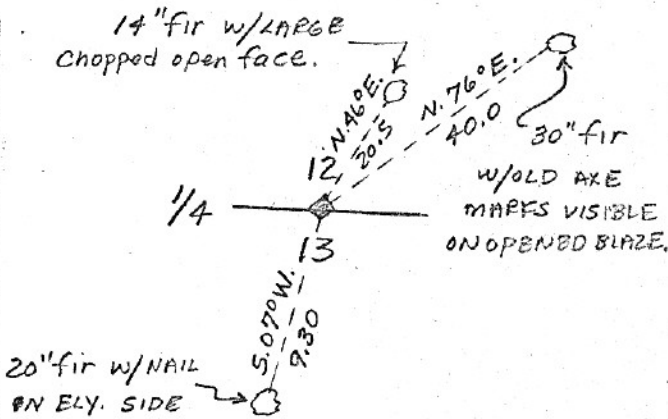
James S. Dielschneider, E.



AUG 11 1971

SECTION OR SUBDIVISION

TWP. 1 N., RANGE 10 E, W.M.



W.O. REF. 7033

CORNER No. _____ COUNTY SURVEYOR

By _____ DEPUTY
CORNER DESCRIPTION

AT CORNER - FOUND
STONE 12"X12"X12" WITH
1/4 CHISELED ON NORTH
FACE, IN MOUND OF STONE.

NO EVIDENCE OF ORIG.
DAK B.T.

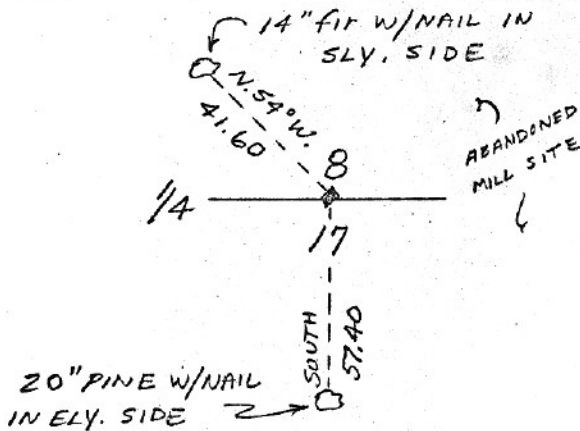
SET SQUARED FIR POST
AT CORNER.

TIMBERED AREA - SLOPES N.

CARD _____ OF _____

SECTION OR SUBDIVISION

TWP. 1 N., RANGE 11 E, W.M.



W.O. REF. 7033

CORNER No. _____

CORNER DESCRIPTION

AT CORNER - FOUND
OLD MOUND OF STONE.

SET 1\" GALVANIZED
PIPE ALONGSIDE.

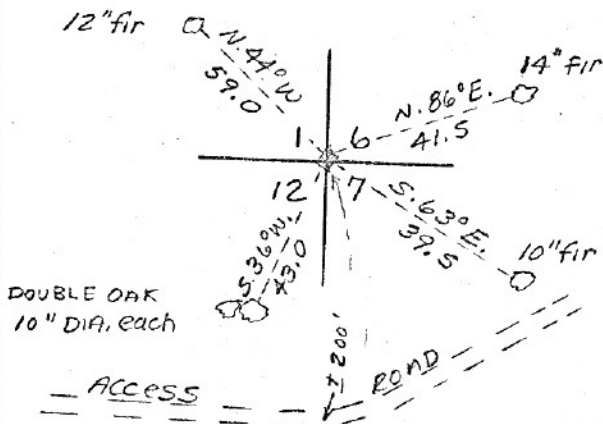
COR. FALLS AT WLY.
EDGE OF CLEARING.

BLAZED LINE RUNS
E-W FROM CORNER.

CARD _____ OF _____

SECTION OR SUBDIVISION

TWP. 1 N., RANGE 10 E. 11 E., W.M.



DOUBLE OAK
10" DIA. each

ACCESS

W.O. REF.

7033

CORNER No.

CORNER DESCRIPTION

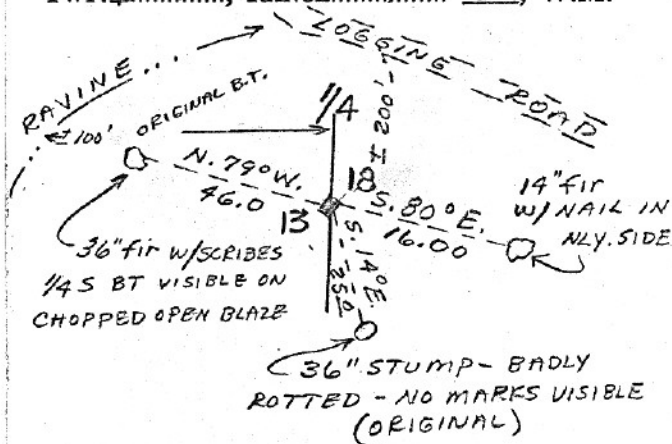
AT CORNER - STEEL AXLE
2" DIAM., 12" ABOVE GROUND
FIRMLY SET.

ALL BEARING TREES
(5 YEARS)
OF RECENT ORIGIN WITH
SCRIBE MARKS VISIBLE ON
PARTIALLY HEALED BLAZES.
COR. LOCATED ON NORTH
EDGE OF LOGGED AREA

CARD OF

SECTION OR SUBDIVISION

TWP. 1 N., RANGE 10 E. 11 E., W.M.



W.O. REF.

7033

CORNER No.

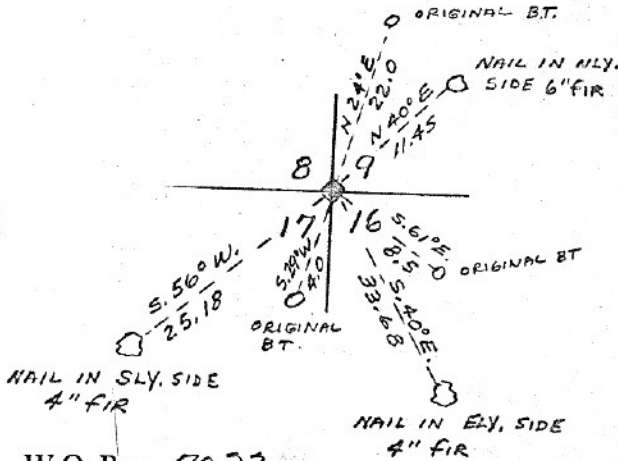
CORNER DESCRIPTION

AT CORNER - FOUND
STONE 10x8x6 WITH
1/4 CHISELED ON E FACE.
A GALVANIZED PIPE
1" DIAM. FIRMLY SET
ALONG SIDE.

CARD OF

SECTION OR SUBDIVISION 89
1716

TWP. 1 N., RANGE 11..... E, W.M.



W.O. REF. 7033

CORNER No.

CORNER DESCRIPTION

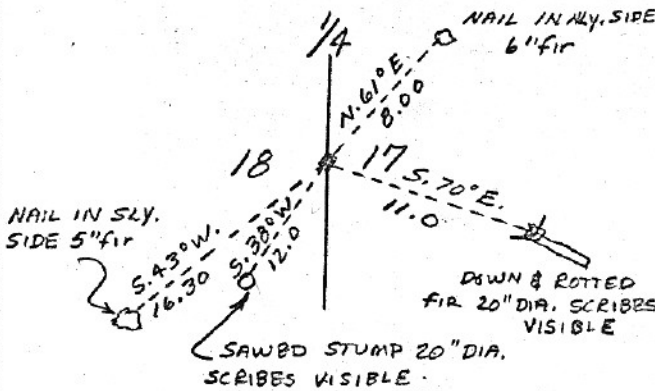
AT CORNER - STEEL
FENCE POST & SQUARED FIR POST.
ORIG. B.T.'S
NE - BROKEN SNAG 12" DIA. W/HEALED
14" BLAZE
SE - SAWED STUMP W/SCRIBES VISIBLE
12"
SW - SAWED STUMP W/SCRIBES VISIBLE

COR. FALLS AT NORTH
EDGE OF LOGGED AREA

CARD OF

SECTION OR SUBDIVISION

TWP. 1 N., RANGE 11..... E, W.M.



W.O. REF. 7033

CORNER No.

CORNER DESCRIPTION

AT CORNER -
SET 1" DIA.
GALVANIZED PIPE.
COR. FALLS IN
DENSE FIR REPRODUCTION.
A LOGGING ACCESS
ROAD IS S. 40° W.
APPROX 100' FROM COR.
AND BRS. WEST AND S.E.

CARD OF

SECTION OR SUBDIVISION

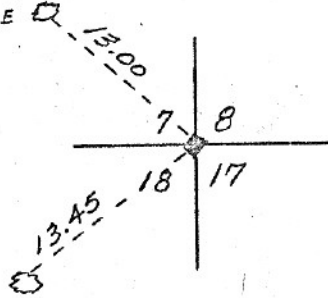
CORNER No.

TWP. 1 N., RANGE 11 E., W.M.

CORNER DESCRIPTION

NAIL IN SW.
SIDE 18" PINE

AT CORNER - SET 3/4"
x 3' PIPE.



THIS COR. RE-ESTAB.
BY PROPORTIONATE METHODS.

NAIL IN N.W. SIDE
28" FIR.

W.O. REF. 7033

CARD OF

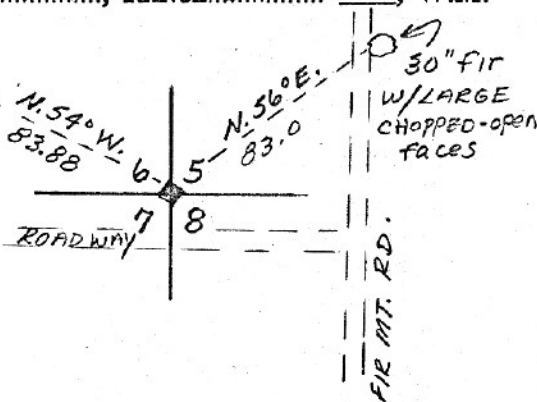
SECTION OR SUBDIVISION

CORNER No.

TWP. 1 N., RANGE 11 E., W.M.

CORNER DESCRIPTION

14" PINE W/ NAIL
IN NLY. SIDE



AT CORNER FOUND STONE
8" x 8" x 10" IN MOUND OF
STONE W X CHISELED ON
TOP. A PIPE 1" DIAM. IS
FIRMLY SET ALONGSIDE.

COR. FALLS IN CLEARING
NO EVIDENCE OF ORIGINAL
B.T.'S.

W.O. REF. 7033

CARD OF