



# United States Department of the Interior

BUREAU OF LAND MANAGEMENT  
Oregon State Office  
P.O. Box 2965  
Portland, Oregon 97208

IN REPLY REFER TO:

9630 (OR957)

July 9, 2003

Randy Johnson  
Hood River County Surveyor  
918 18th St.  
Hood River, Oregon 97031-1314

Dear Mr. Johnson:

The following record has been accepted and officially filed.

Township	Group No., State	Date Accepted	File Name
T. 1 N., R. 10 E.	2019, OR	June 18, 2003	t010n100e 002.jpg

A scanned copy of the Field Notes and a link to the scanned copy of the Plat can be accessed through the internet at the following address:

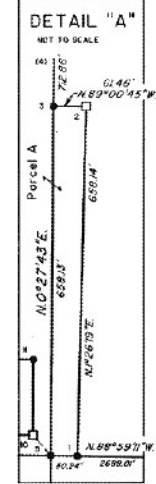
<http://www.or.blm.gov/or957/Cadastral/surveyindex.htm>

Sincerely,

Mary J.M. Hartel  
Chief, Branch of Geographic Sciences

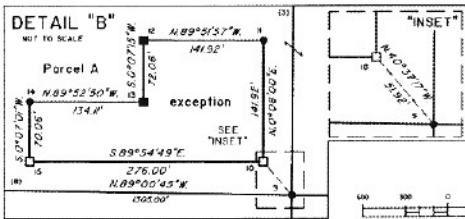
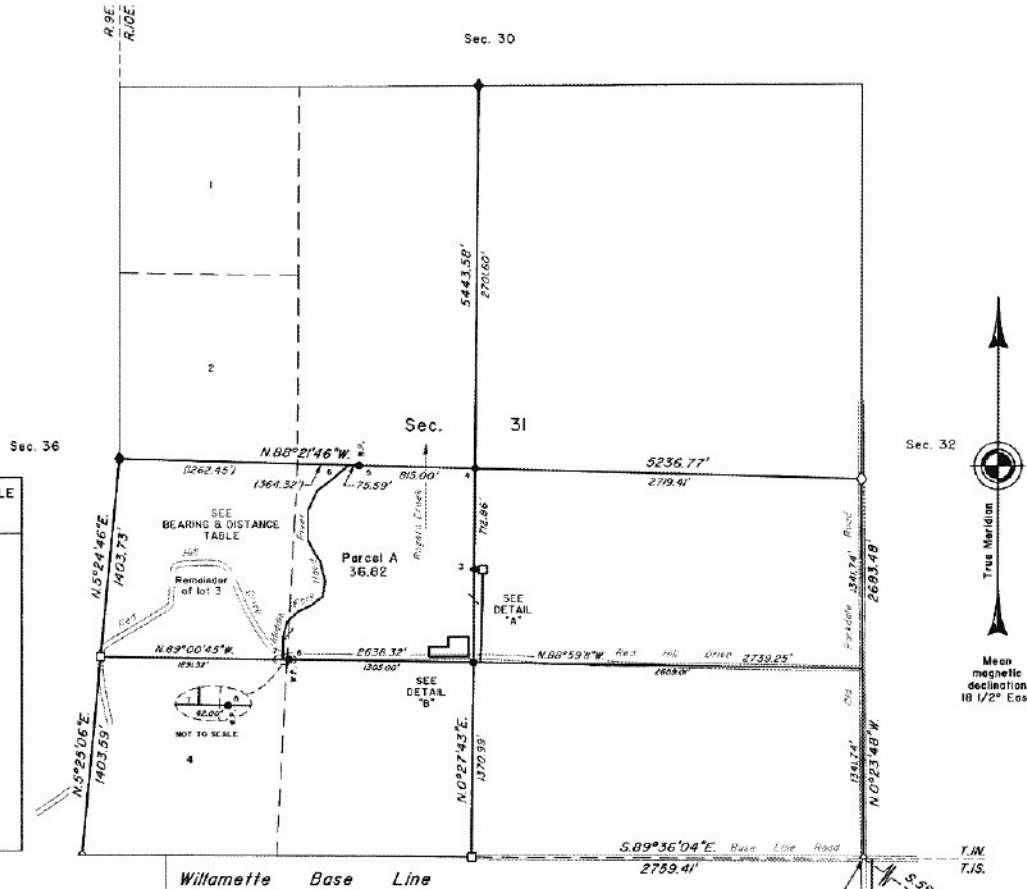
TOWNSHIP 1 NORTH, RANGE 10 EAST, OF THE WILLAMETTE MERIDIAN, OREGON

DEPENDENT RESURVEY, SUBDIVISION OF SECTION 31 AND SURVEY



**BEARING AND DISTANCE TABLE**  
Center of Channel  
Middle Fork Hood River

6	S 48° 38' 05\"/>
	S 52° 43' 00\"/>
	S 25° 38' 52\"/>
	S 0° 13' 46\"/>
	S 28° 27' 41\"/>
	S 34° 28' 23\"/>
	S 13° 08' 10\"/>
	S 7° 57' 16\"/>
	S 5° 18' 28\"/>
	S 65° 59' 36\"/>
	S 48° 05' 34\"/>
	S 14° 13' 58\"/>
7	S 0° 25' 37\"/>



A history of surveys is contained in the field notes.

This plat represents a dependent resurvey of portions of the west boundary and subdivision lines, T. 1 N., R. 10 E., Willamette Meridian, Oregon, designed to restore the corners in their true original locations according to the best available evidence, the subdivision of section 31, and the metes-and-bounds survey of Parcel A in section 31.

Measured distances and directions have been adjusted by Cadastral Measurement Management (CMM), computer software that incorporates a least squares adjustment routine. The adjusted bearings and distances are reported to the nearest second and 0.01 foot.

Except as shown hereon, the lottings and areas are as shown on the plat approved January 6, 1880.

The survey was executed by Daniel E. Weller, Cadastral Surveyor, beginning May 6, 2002, and completed May 16, 2002, pursuant to Special Instructions dated May 3, 2002, under Group Number 2019, Oregon.

Timber in this area consists of fir, cedar, and maple.

The tie to the geodetic control station is reported as mean bearing and sea level distance.

**LEGEND**

- ◊ Original corner previously remonumented
- ◻ Original corner remonumented this survey
- ◻ Corner previously established or reestablished
- Corner previously established or reestablished; remonumented this survey
- Corner established or reestablished this survey

UNITED STATES DEPARTMENT OF THE INTERIOR  
BUREAU OF LAND MANAGEMENT

Portland, Oregon June 18, 2003

This plat is strictly conformable to the approved field notes, and the survey, having been correctly executed in accordance with the requirements of law and the regulations of this Bureau, is hereby accepted.

For the Director

*Mary J. M. Hartzel*

Chief Cadastral Surveyor of Oregon

Latitude 45° 31' 0.89\"/>

U.S.F.S.  
ISIOE5  
1987