

Start Date
To Mt Hood
1000 Beginning of Project

1/2 Section line

Cras Davis

Truck
To Hood River
Cabin
To Hood River
Passing Tr

C.E. Lovell

Frank Purdy

Driveway

Driveway

Frank Purdy

ODELL

G. T. Early

To Section line

Fred Howard

Benfield

Section line

1/2 Section line

PCB
Δ 30°55'
T=143.4'
L=211.1'

PCB
Δ 8°05'
T=144.9'
L=212.1'

1°PCB
Δ 1°23'
T=69.2'
L=138.3'

PCB
Δ 20°
T=193.4'
L=372.6 FT

24188.6 FT

27143.6 FT

29101.7 FT

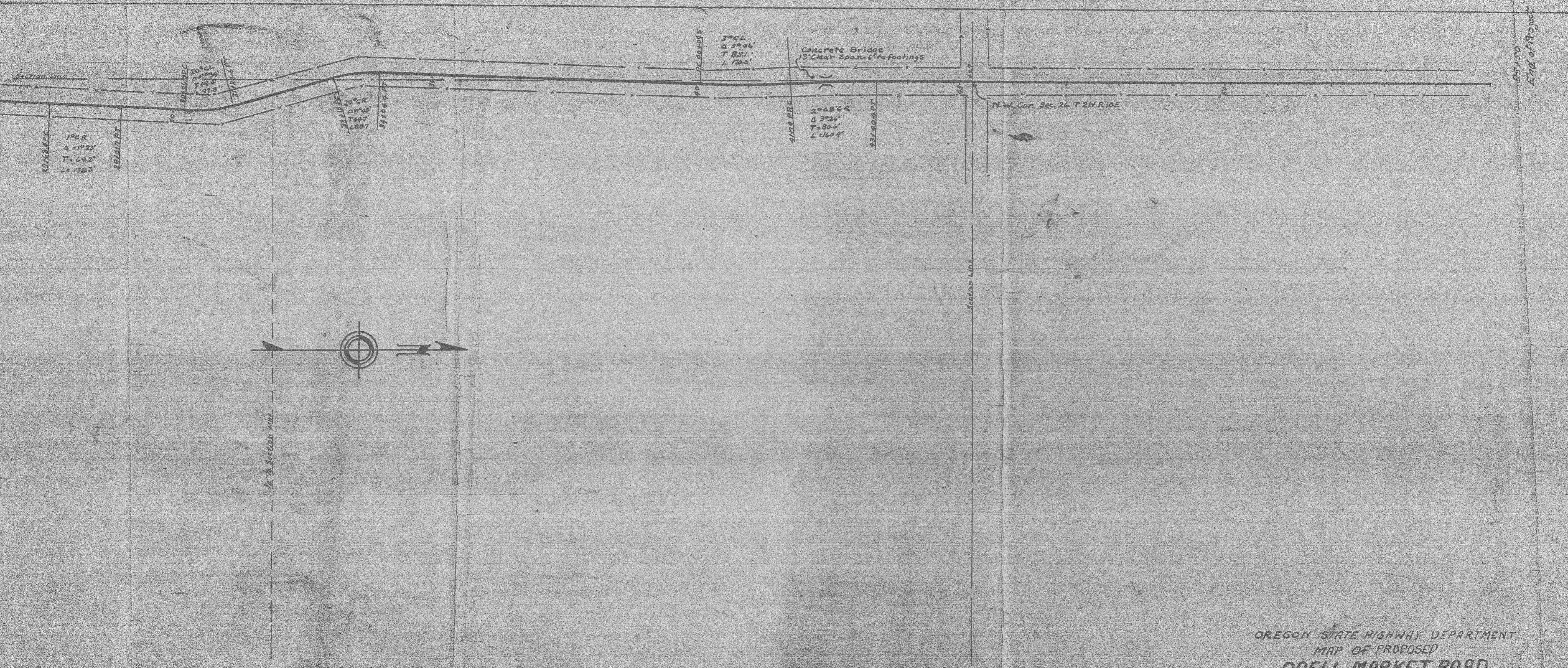
16150.3 FT

20

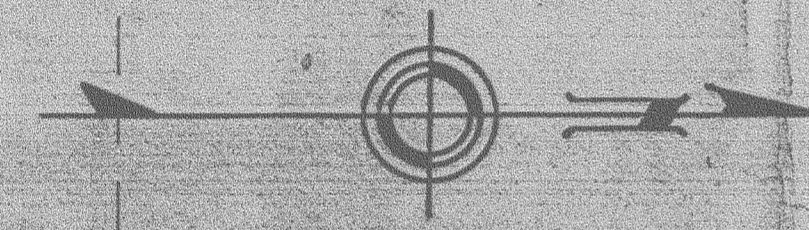
16

30

20



55450
End of Project



OREGON STATE HIGHWAY DEPARTMENT
 MAP OF PROPOSED
ODELL MARKET ROAD
 IN
 HOOD RIVER COUNTY
 Scale 1 Inch = 100 Feet

D. A. 1252 C