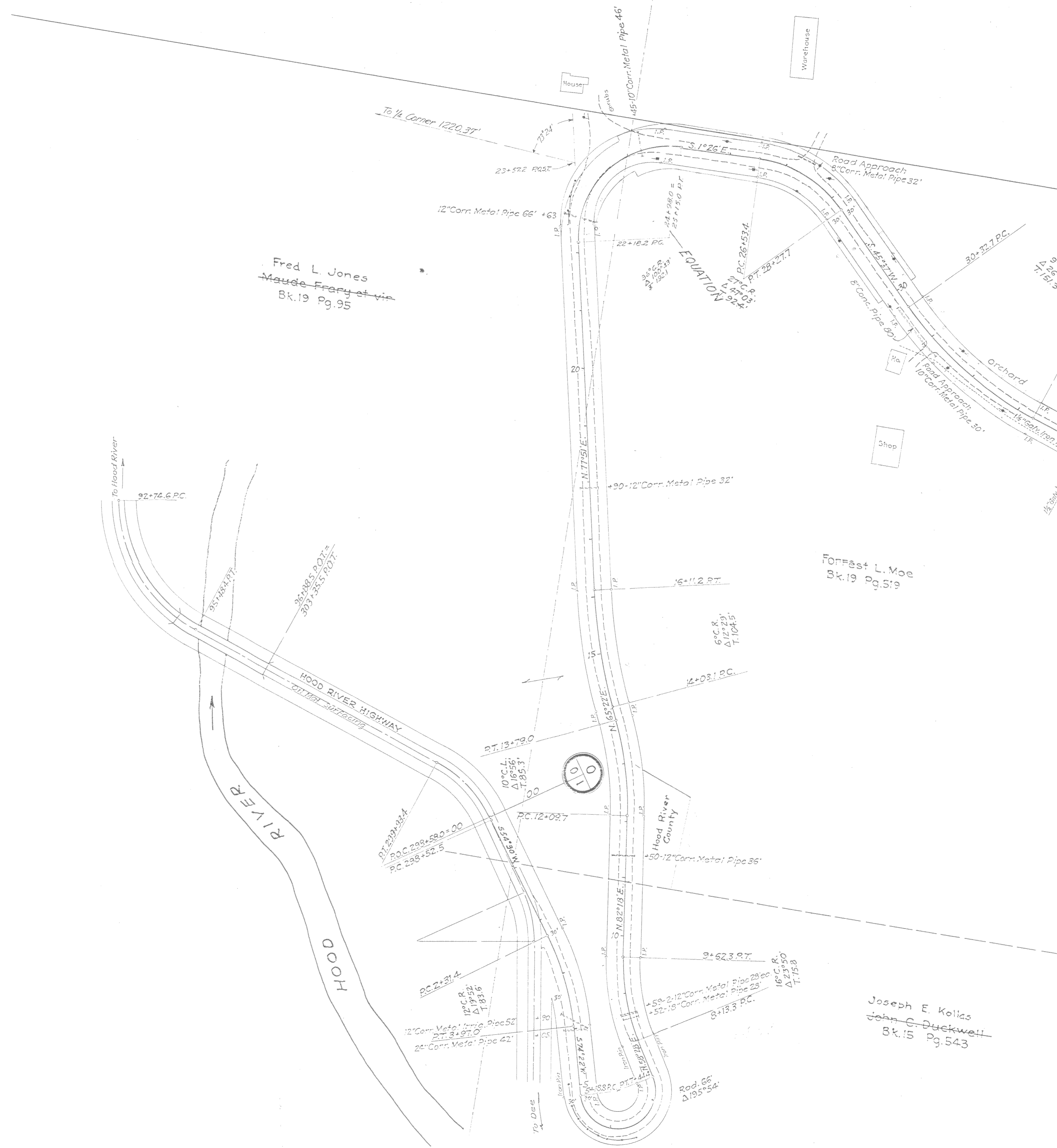


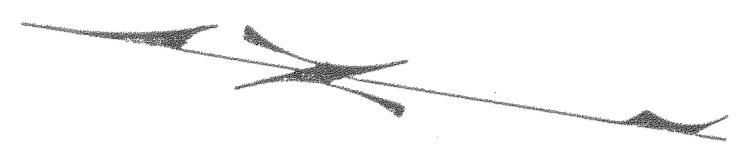
Tucker Bridge → Summit Rd.
 (Wabers Bros Store)

HWY 282 1948
 Loc line

OREGON STATE HIGHWAY DEPARTMENT
 Located Line
ODELL HIGHWAY
 HOOD RIVER COUNTY
 Scale 1"=100'
 Traced by C.E.R. January, 1948.
 Drg. No. 6B-26-20



T.2N. R.10E., W.M.



Wilfred L. Walter et ux
Bk.31 Pg.539

Harry
Harvey J. Plog et ux
Bk.25 Pg.104

Louis C. Plog et ux
Bk.25 Pg.105

14
15
22
23

1/4 Cor. Stone Found

Approach
Metal Pipe 32'
10" Cor. Metal Pipe 30'
Orchard
Shep

Frank Issei

Clarence C. Brock
Bk.23 Pg.522

L.E. & Florence Judd

Frank M. Cox
Bk.4 Pg.6

Roscoe E. and Mary Miller
Bk.15 Pg.488

L. Moe
Pg.519

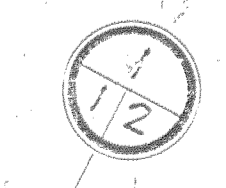
2" C.R.
4" x 8"
T.1051
PT. 371+20.1
PT. 381+19.4
PT. 401+18.4

53' 10" Wood Irrig. Pipe 48"
43' 40.9' P.C.
6" C.L.
4 1/2" x 4"
T.118.2
45' 78.1' P.T.

Barn

2 1/2" Pipe Siphon 20'
with concrete barn

5 1/8" 50' W. S.
25' 1/2" Cor. Metal Pipe 36"



110' 11.0' SOUTHWEST
24' 11.2' P.C.
24' 11.2' P.C.
24' 11.2' P.C.
24' 11.2' P.C.

6" C.L.
4 1/2" x 3"
T.121.6
PC. 391+12.8

Road Approach
8" Drain Tile 24'
Road Approach
12" Wood Box

Frank M. Cox
Bk.4 Pg.6

Joseph E. Kollas
John C. Duckwell
Bk.15 Pg.543

D-282-15

et ux

Wilfred L. Walter
Bk.3! Pg.539

Claude E. and Flora Y. Coppie
Bk.4 Pg.313

Michael A. and Hilda Udelius
Bk.16 Pg.349

Odell

Creek

Sec. 23

Sec. 26

nk M. Cox
Pg.6

Wembell I. and Bessie M. Kirby
Bk.30 Pg.302

Forrest L. Moe
Bk.12 Pg.67

Hood River County
Bk.17 Pg.100

Lenard Bedford
State of Oregon
Bk.21 Pg.86

J. P. Naumes
Bk.15 Pg.394

Sec. 27

Sec. 22

Church of Christ
20-165

Cox



Sec. 23

Sec. 26

Sec. 27

Elmer W. Moilanen

~~Adolph and Alma Rippe~~
Bk. 25 Pg. 29

To Mt. Hood Loop Hwy.

39+74.6

Kemp Lodge
1.00 E. Ho"

100+82.8 P.C.

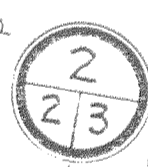
2°30' C.L.
Δ 4°15' =
7.85.0'

C.E. Love
Gar.

End of Gravel Surface
Beginning of Concr. P.V.
102+52.8 P.T.

55°35'E
Iron Pins

D. D. Kemp



L. M. Kemp

Road Approach
5'x16' Wood Bridge

School Dist. No. 5
Bk. 8 Pg. 347

3 Road Approaches
18" Wood Pipe 30'
10" Corr. Metal Pipe 20'
10" Corr. Metal Pipe 14'

Archie N. Kurt et ux.
Merlyn J. LaBounty

18' wide Concr. Bridge 15' - 136'
P.C. 102+63.8

3° C.R.
Δ 5° 57' =
7.99.3'

Irwin Bowerman
Yeva Sagarbon
22 470 23 606

P.T. 104+62.1

Gravel Foot