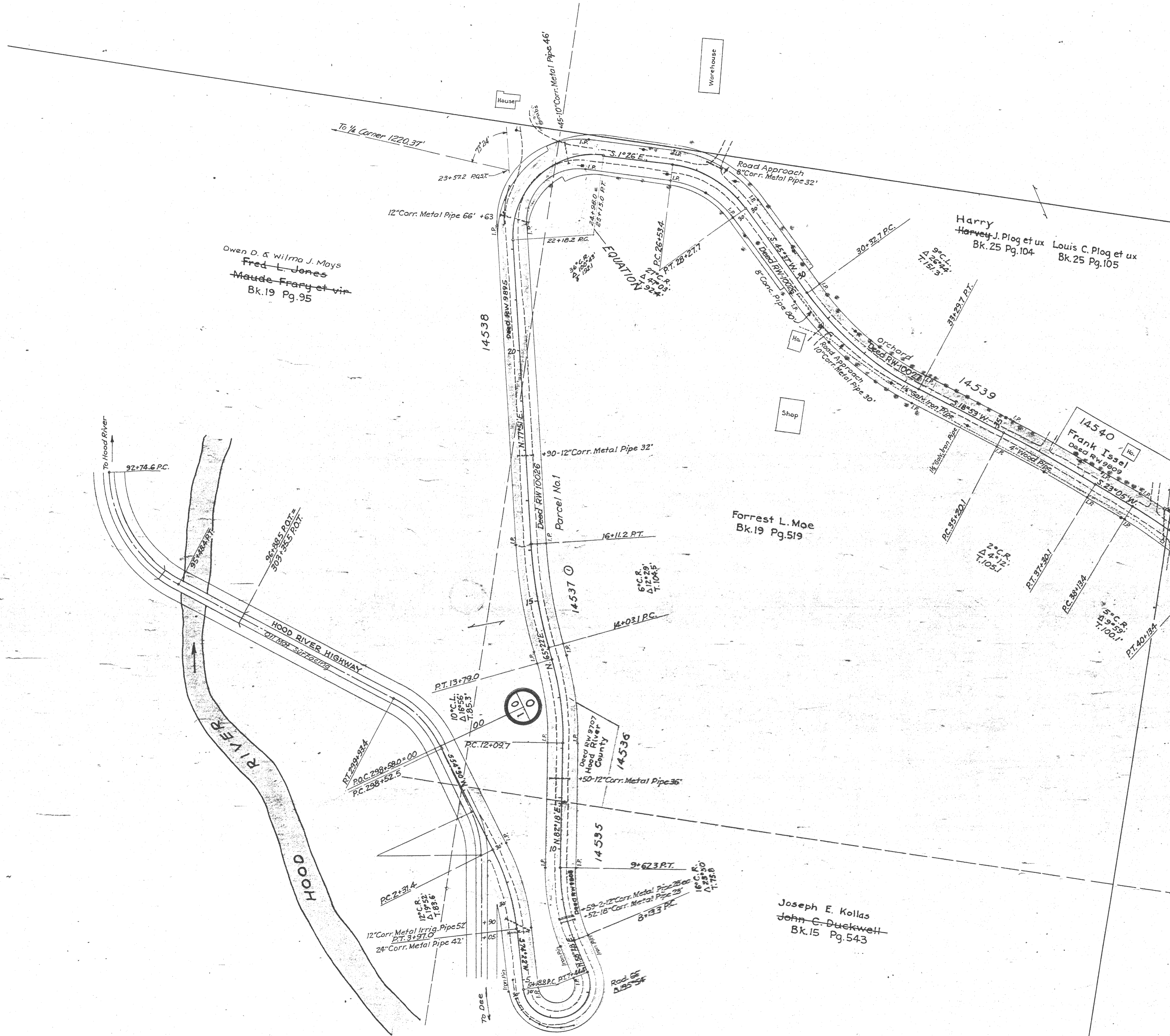


OREGON STATE HIGHWAY DEPARTMENT  
 Located Line  
**ODELL HIGHWAY**  
 HOOD RIVER COUNTY  
 Scale 1"=100'  
 Traced by C.E.R. January, 1948.  
 Drg. No. 6B-26-20



Owen D. & Wilma J. Mays  
 Fred L. Jones  
 Maude Frary et vir  
 Bk. 19 Pg. 95

Harry Harvey J. Plog et ux  
 Louis C. Plog et ux  
 Bk. 25 Pg. 104  
 Bk. 25 Pg. 105

Forrest L. Moe  
 Bk. 19 Pg. 519

Frank Isdel  
 Bk. 19 Pg. 999

Joseph E. Kollas  
 John C. Duckwell  
 Bk. 15 Pg. 543

T.2N. R.10E.,W.M.



Wilfred L. Walter et ux  
Bk.31 Pg.539

g et ux  
1.104

Louis C. Plog et ux  
Bk.25 Pg.105

14  
15  
22  
23

1/4 Cor. Stone Found

Clarence C. Brock  
Bk.23 Pg.522

L.E. & Florence Judd

H.C. Throop  
68-713

Rescoe E. and Mary Miller  
Bk.15 Pg.488

Frank M. Cox  
Bk.4 Pg.6

Wembell I. and B  
Bk.30 Pg.

14540  
Frank Tessel  
Deed RW 9809  
S 29° 05' W

90 12" Corr. Iron Siphon Pipe  
with 2 Conc. End Bars

53' 10" Wood Irrig. Pipe 48"  
43' 40.9 P.C.

2" Iron Pipe Siphon  
with Conc. End Bars

14387

Deed RW 9808  
S 18° 10' W

25' 12" Corr. Metal Pipe 36"

57' 14" P.C.



53' 58" S. 89° 26' W.

10" Corr. Metal Pipe 30"

Deed RW 25865  
78-198  
36853  
0.04Ac.

Road Approach  
12" Wood Box

Road Approach  
6" Clay Tile 18'

14376

Deed RW 9806  
S 33° 34' E

Road Approach  
12" Wood Box

Frank M. Cox  
Bk.4 Pg.6

Road Approach on R.  
8" Corr. Metal Pipe 40"

14" Corr. Metal Pipe 30"

12" Corr. Metal Pipe 40"

12" Corr. Metal Pipe 40"

12" Corr. Metal Pipe 40"

12" Corr. Metal Pipe 40"

12" Corr. Metal Pipe 40"

12" Corr. Metal Pipe 40"

12" Corr. Metal Pipe 40"

12" Corr. Metal Pipe 40"

12" Corr. Metal Pipe 40"

12" Corr. Metal Pipe 40"

12" Corr. Metal Pipe 40"

12" Corr. Metal Pipe 40"

12" Corr. Metal Pipe 40"

12" Corr. Metal Pipe 40"

12" Corr. Metal Pipe 40"

12" Corr. Metal Pipe 40"

12" Corr. Metal Pipe 40"

To Fikes

Road

Road

Road

Road

Road

Road

Road

Road

Road

Road

Road

Road

Road

Road

Road

Road

Road

Road

Road

Road

Wilfred L. Walter  
Bk. 31 Pg. 539

Claude E. and Flora Y. Cottle  
Bk. 4 Pg. 313

Michael A. and Hilda Udellius  
Bk. 16 Pg. 349

Elmer W. Moilanen  
Adolph and Alma Rippe  
Bk. 25 Pg. 29

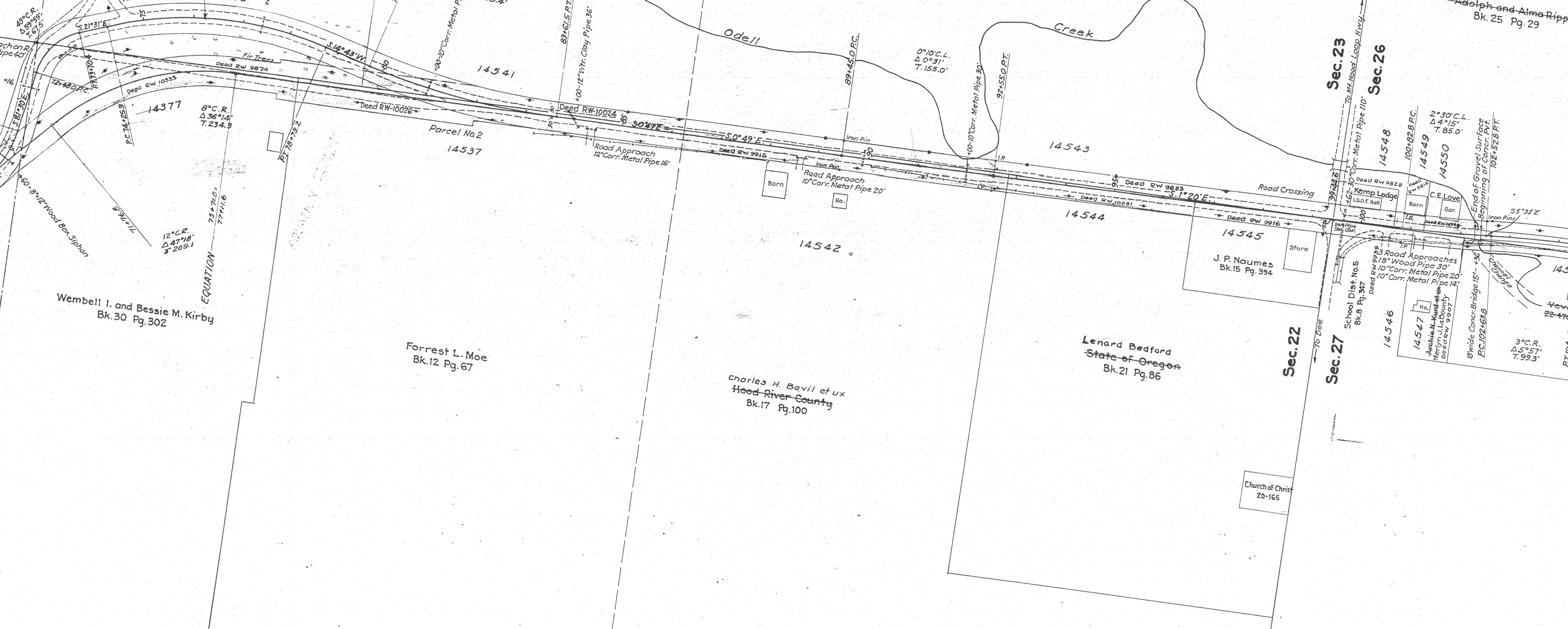
Old Route Abandoned  
as State Highway  
File A & R 185

Odell

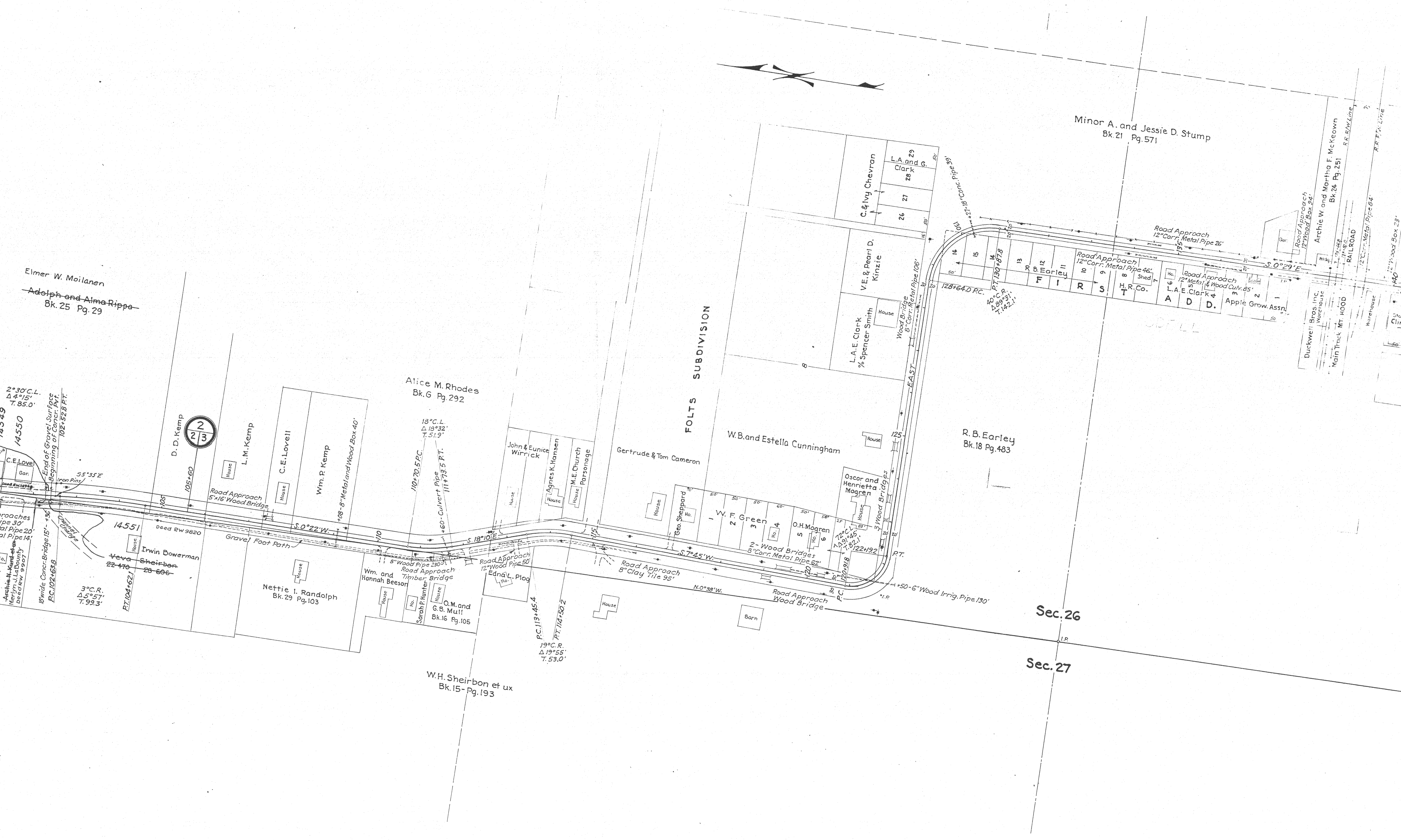
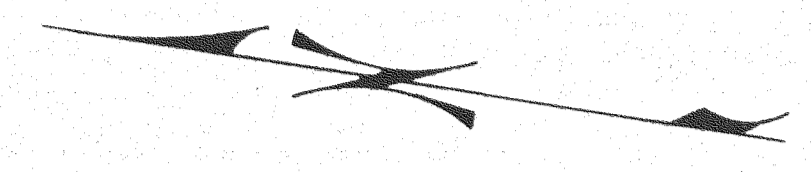
Creek

Sec. 23

Sec. 26



T.2N. R.10E., W.M.



Elmer W. Moilanen  
Adolph and Alma Rippe  
Bk. 25 Pg. 29

Alice M. Rhodes  
Bk. 6 Pg. 292

FOLTS  
SUBDIVISION

W.B. and Estella Cunningham

R. B. Earley  
Bk. 18 Pg. 483

Sec. 26

Sec. 27

2°30' C.L.  
Δ 4°15'  
7.85.0'

14550  
C.E. Love  
Bar.

14551  
Irwin Bowerman  
Veva Sheirbon  
22-470  
28-606

3° C.R.  
Δ 5°57'  
7.99.3'

14551  
Nettie I. Randolph  
Bk. 29 Pg. 103

19° C.R.  
Δ 19°55'  
7.53.0'

W.H. Sheirbon et ux  
Bk. 15 - Pg. 193

John & Eunice Wirrick  
Agnes K. Hansen  
M.E. Church Parsonage

Gertrude & Tom Cameron

Geo. Sheppard  
W.F. Green  
O.H. Mogren

Edna L. Plog  
O.M. and G.B. Mull  
Bk. 16 Pg. 105

Barn

C. & Ivy Chevron  
L.A. and G. Clark  
26 27

V.E. & Pearl D. Kinzie

L.A.E. Clark  
% Spencer Smith

128°64.0 P.C.  
P.T. 130°18.8

Earley II  
Earley I  
H.R. Co.

L.A.E. Clark  
Appie Grow Assn.

Oscar and Henrietta Mogren

120°9.8  
P.T. 122°49.2

Minor A. and Jessie D. Stump  
Bk. 21 Pg. 571

Road Approach  
12" Corr. Metal Pipe 26'

Road Approach  
12" Corr. Metal Pipe 46'

Road Approach  
12" Metal & Wood Cuv. 85'

Road Approach  
12" Wood Box 94'

Road Approach  
12" Metal Pipe 64'

Road Approach  
12" Metal Pipe 64'

Road Approach  
12" Metal Pipe 64'

Road Approach  
12" Metal Pipe 64'

Road Approach  
12" Metal Pipe 64'

Road Approach  
12" Metal Pipe 64'

Road Approach  
12" Metal Pipe 64'

Road Approach  
12" Metal Pipe 64'

Road Approach  
12" Metal Pipe 64'

Road Approach  
12" Metal Pipe 64'

Road Approach  
12" Metal Pipe 64'

Road Approach  
12" Metal Pipe 64'

Road Approach  
12" Metal Pipe 64'

Road Approach  
12" Metal Pipe 64'

Road Approach  
12" Metal Pipe 64'

Road Approach  
12" Metal Pipe 64'

Road Approach  
12" Metal Pipe 64'

Road Approach  
12" Metal Pipe 64'

Road Approach  
12" Metal Pipe 64'

Road Approach  
12" Metal Pipe 64'

Road Approach  
12" Metal Pipe 64'

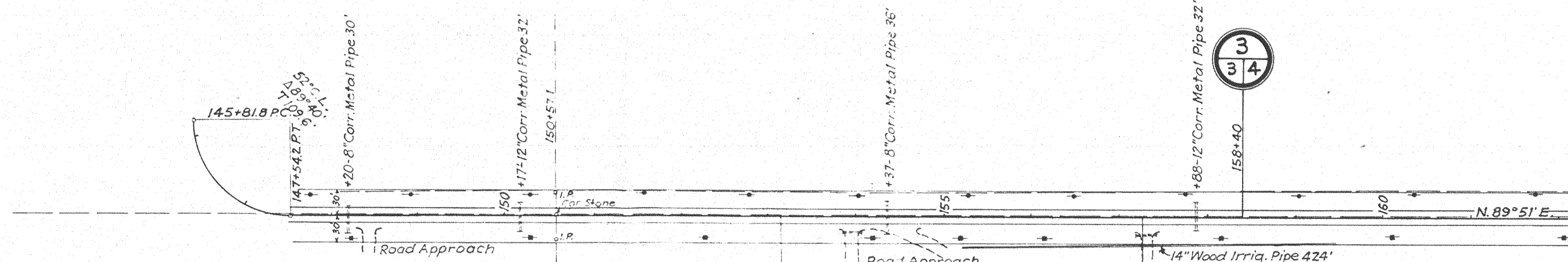
Road Approach  
12" Metal Pipe 64'

Road Approach  
12" Metal Pipe 64'



Margaret A. Davis  
Bk. 25, Pg. 58

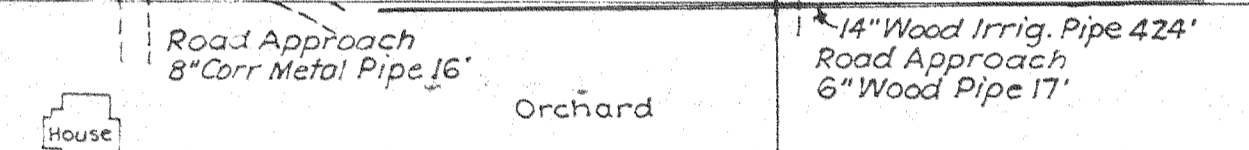
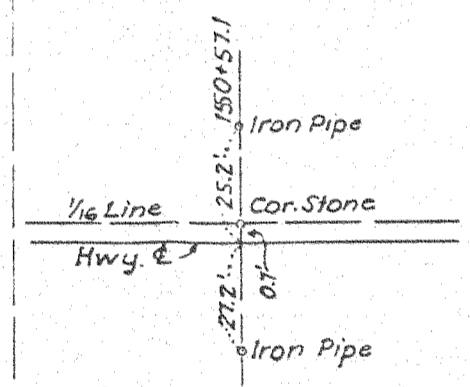
Margaret A. Davis  
Bk. 25, Pg. 56-58



Margaret A. Davis  
Bk. 25, Pg. 58

Grace M. Chambers  
Bk. 14, Pg. 54

Fred & Leone Petri  
Bk. 27, Pg. 237



Sec.26

William G. & Grace N. Morris  
B.-22 Pg.5

Dennis & Mabel Statton  
Bk.21, Pg.547

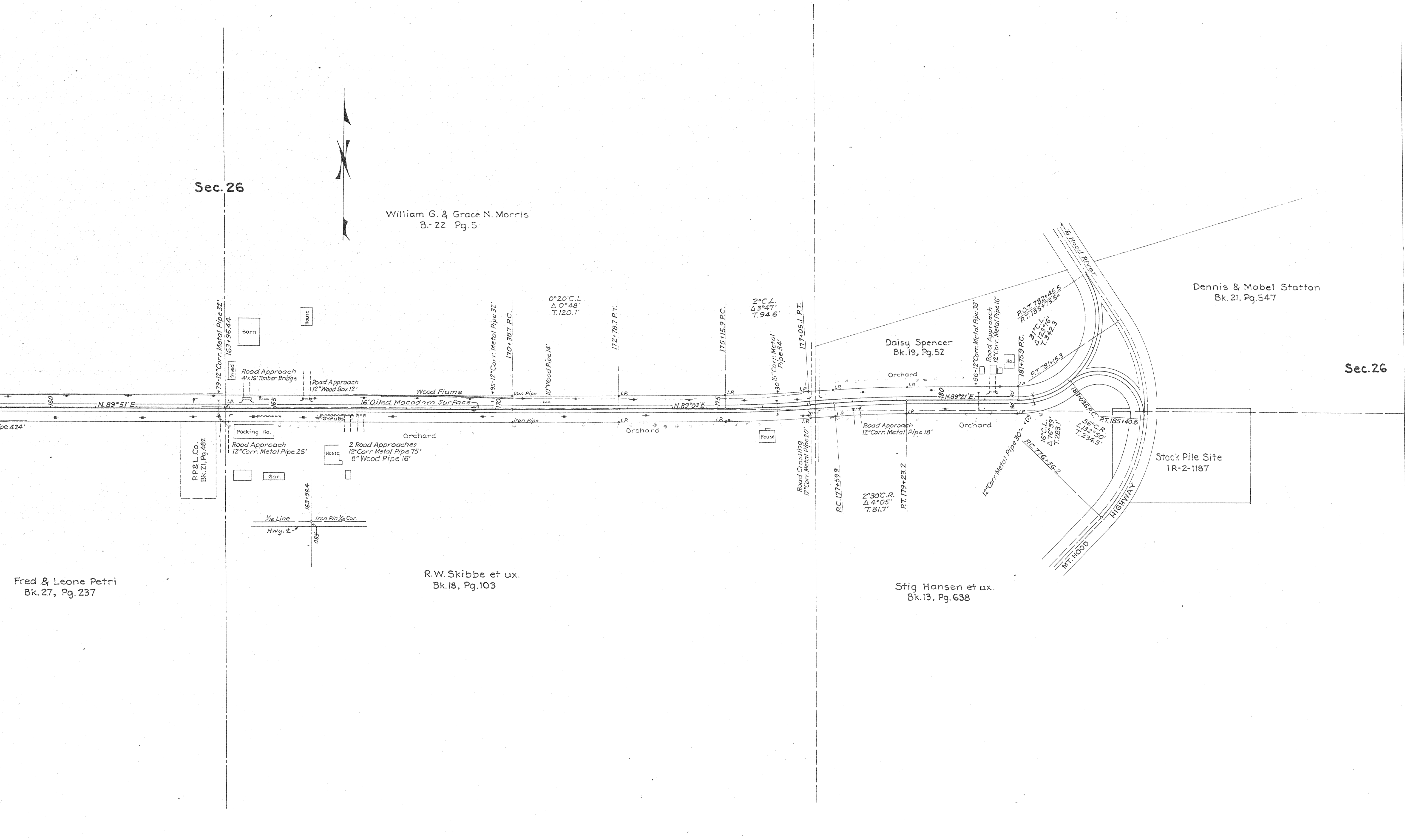
Sec.26

Fred & Leone Petri  
Bk.27, Pg.237

R.W.Skibbe et ux.  
Bk.18, Pg.103

Stig Hansen et ux.  
Bk.13, Pg.638

Stock Pile Site  
1R-2-1187



79'-12" Corr. Metal Pipe 32'  
 1637+36.44  
 Barn  
 House  
 Road Approach  
 4x16 Timber Bridge  
 Road Approach  
 12" Wood Box 12'  
 Wood Flume  
 35'-12" Corr. Metal Pipe 32'  
 170+387 P.C.  
 10" Wood Pipe 14'  
 172+787 P.T.  
 0°20' C.L.  
 $\Delta 0^{\circ}48'$   
 T.120.1'  
 175+15.9 P.C.  
 2° C.L.  
 $\Delta 3^{\circ}47'$   
 T.94.6'  
 177+05.1 P.T.  
 30'-15" Corr. Metal Pipe 34'  
 180  
 N.89°21'E  
 86'-12" Corr. Metal Pipe 38'  
 Road Approach  
 12" Corr. Metal Pipe 16'  
 P.O.T. 782+45.5  
 P.T. 185+73.5  
 31' C.L.  
 $\Delta 12^{\circ}16'$   
 T.542.3  
 P.T. 781+15.3  
 181+759 P.C.  
 12" Corr. Metal Pipe 30' 108  
 P.C. 177+59.9  
 P.T. 179+23.2  
 2°30' C.R.  
 $\Delta 4^{\circ}05'$   
 T.81.7'  
 12" Corr. Metal Pipe 30' 108  
 P.C. 176+35.2  
 P.T. 185+40.8  
 56° C.R.  
 $\Delta 19^{\circ}50'$   
 T.234.3'  
 Stock Pile Site  
 1R-2-1187  
 MT. HOOD HIGHWAY

station

Sec.26

Sec.25

Drg. No. 6B-26-20