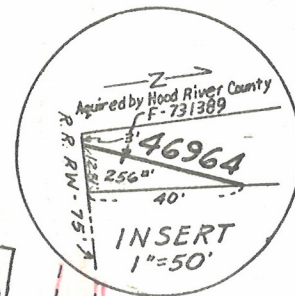
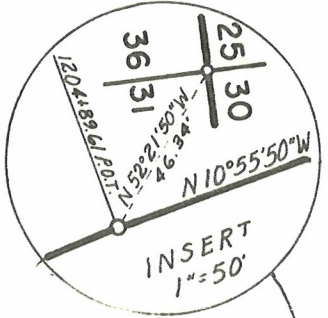


T. 3 N., R. 10 E., W.M.

NATHAN L. BENSON
D.L.C. NO. 40

276.23



22° C.L.
TΔ = 45° 29' 10"
S = 110.0 Sps.
a = 12° 06'
Q = 20.0

22° C.R.
TΔ = 164° 20' 57"
S = 110.0 Sps.
a = 12° 06'
Q = 20.0

EQ. Const. 1130 + 34.17 P.O.C. Bk. = 36

T. 3 N., R. 10 E., W.M.
T. 3 N., R. 11 E., W.M.

See 9B-2-19
MT. HOOD HWY.
N 30° 10' W

Const. 1127 + 59.37 P.C.
7° C.R.
Δ = 19° 14' 10"
T = 138.71'

Const. 1127 + 03.37 P.T.

Y Inn, Inc.
Film No. 681143

GRID BEARINGS-NORTH ZONE
OREGON STATE HIGHWAY DEPARTMENT

Acquire From	As Shown
For	R/W
Highway	MT. HOOD Button County Road
County	Hood River
Scale	1" = 100'
Date	Dec., 1971

6B-24-4 9B-2-19

See Encroachment Map 9B-9-17

