

OREGON STATE HIGHWAY DIVISION

Located Line

MT. HOOD-LONG PRAIRIE ROAD SEC.

MT. HOOD HIGHWAY

HOOD RIVER COUNTY

Scale: 1 inch = 100 feet

APRIL, 1988

PRELIMINARY
Subject to Change

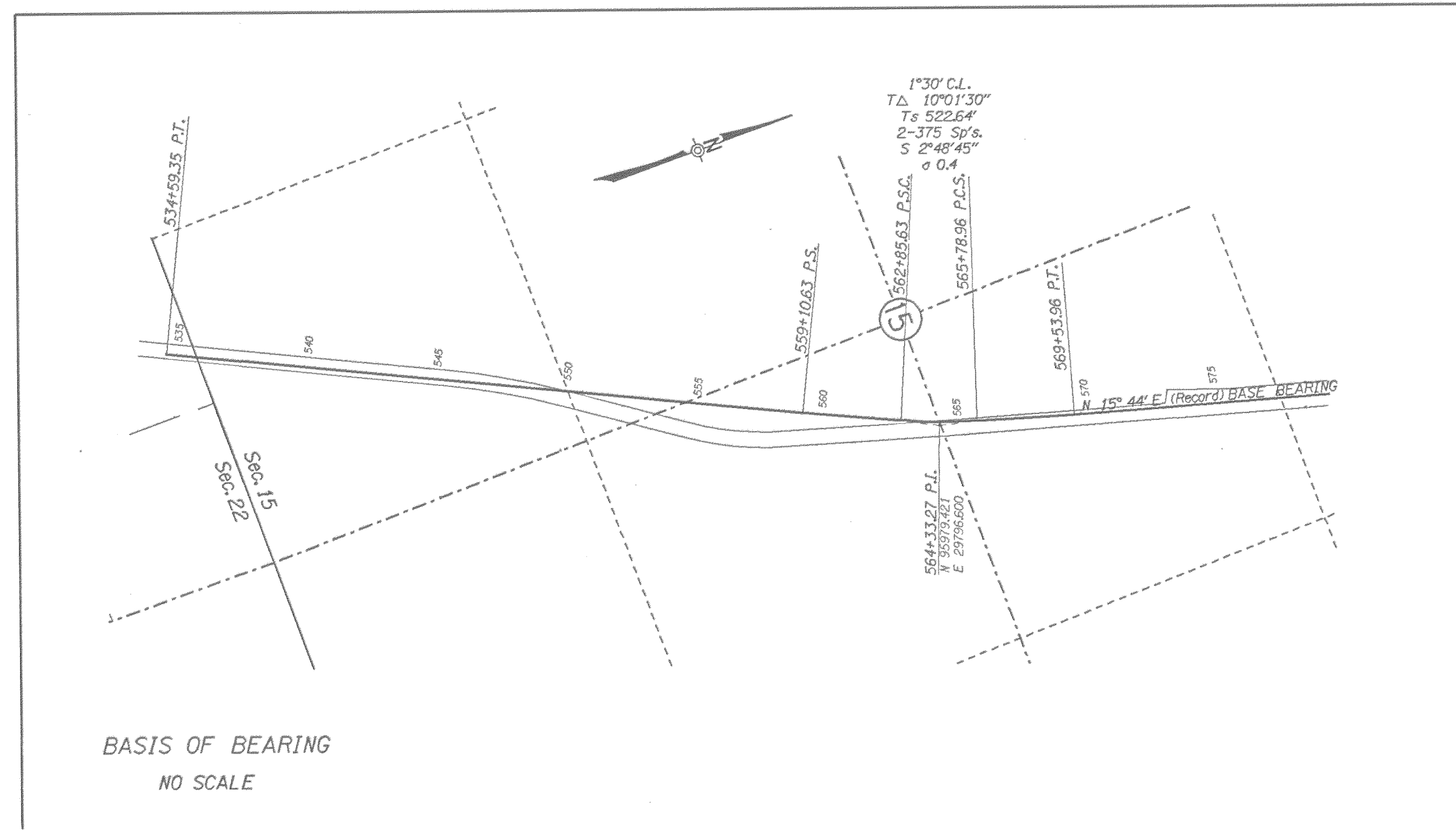
BEARINGS BASED ON AN OREGON STATE HIGHWAY DIVISION SURVEY. SEE DRG. NO. 9B-2-11, DATED MAY, 1967.

ASSUMED COORDINATES

DRG. NO. 9B-30-4

PART 1 OF 2 PARTS

OS3:[370,101]MHL P87.DGN;1



SEE MAPS 2B-17-13

Hood River Hwy.
(Formerly Mt. Hood Loop H...)

649488272
N 89°09'42"
E 297°06'60"
3334
2827

SEE MAPS 8B-17-19
9B-2-11

PRELIMINARY
Subject to Change

W.J. & J.M. Frost
F-850427

D.H. McGRAW
F-792927

W.F. & B. Siegle
F-841013

W.A. & A. Forwig
F-760137

F.E. & P.L. Fauver
F-810748
MT. Hood Corner, Inc. (C.P.)
F-810749

3 G. Inc.
F-880406

H.C. & M.J. Bowman
F-772078

L.B. Dominguez
F-784095

R.W. Huskey
H.M. Huskey
F-772858
F-792359

K.D. Momberg
F-850713

Hood River County
F-732395

R.A. Zeman Jr.
L.C. Zeman Jr.
F-800857

L.K. & M. Zeman
46-386
52-166
63-403
31-152

R. & I. Cunningham
67-31

D.R. Cunningham
F-870289

MAPS 8B-17-19
9B-2-11

P.N. & D.J. Au
70-393

COOPER SPUR ROAD
Hood River Hwy.
(Formerly Mt. Hood Loop Hwy.)

CUNNINGHAM DRIVE

AUBERT DRIVE

Lot 13

Lot 12

Lot 9

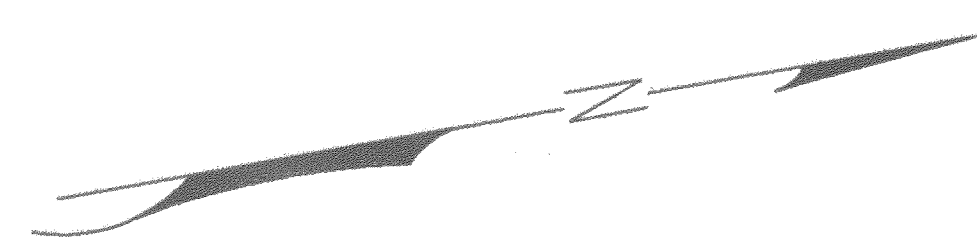


WOODWORTH DRIVE

T. & T. Draper
F-802411

R. & A. Braun
F-671386

PRELIMINARY
Subject to Change



L.L. Green, M.C. Green &
J.H. Green D.B.A.
Green Brothers Logging Co.
79-594

W.A. & A. Farwig
F-760137

Center Line Irrigation Canal

Central Oregon Production
Credit Association
F-820106
K.H. Stawsky & P. Jensen (C.P.)
F-812282

J.L. Butterfield
K.P. Young
F-810838

00°30' C.L.
Δ 1°11'
T 118.34'

467+14.77 P.I.
N 57°27'09"
E 285°10'29"

B.E. Olson
F-851034

T.L. & H. Hansberger
F-840434

S.F. & M. Wilcox
F-783588

M.B. Troxel
F-821914

B. & K. Hirata
F-871867

J.O. Bailey, Jr. &
H.N. Bailey
F-700789
Browning Timber, Inc. (C)
F-841563

P.N. & D.J. Aubert
70-393

Lot 5

Lot 4

Lot 13

Fd. Brass Cap (T-25-84)
1/4" Brass Cap
E 235°12'22"





P.W. Jensen
F-772546

J.V. & M.A. Hunt
F-712437

C. & C. Nastasi
75-341

505+35.76 P.T.
E.P. Kortge
F-772870
A.A. Noble (C.P.)
F-820837

1.25 Ac.±L.T.
R. & M. Santacroe
F-772547

1.65 Ac.±L.T.

C.E. & L. Muma
34-296
0.56 Ac.±L.T.

D. Patterson
F-811516

R.C. & H.K. Semmes
F-731788

B.A. Patterson
F-811517

H.R. & D.I. Jamison
F-782387
L. & N. Ayers (C.P.)
F-792210

S.A. & C.A. Hansen
F-791991

J.O. Bailey, Jr. &
H.N. Bailey
F-700789
Browning Timber, Inc. (C.P.)
F-841563

G.M. & C.D. Goss
F-790857

J.L. & R.L. Gross
F-770370
F-772652

K.G. & V. Lope
F-720792

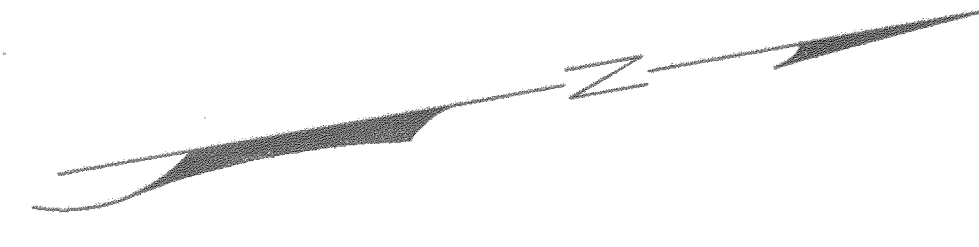
D. & M.S. Sword
F-771230

H.L. & B. Hazen
F-784124

L.H. & G.J. Campbell
F-731050

M.F. & M.E. Young
F-762669

J.R. Sanders (Trustee)
F-831781



PRELIMINARY
Subject to Change



21
22

16
15

MT. HOOD-LONG PRAIRIE ROAD SEC.
 MT. HOOD HIGHWAY
 HOOD RIVER COUNTY
 LOCATED LINE
 SCALE: 1"=100'
 PART 1 OF 2 PARTS
 DRG. NO. 9B-30-4

PRELIMINARY
Subject to Change

SEE MAP 9B-30-5