

MT. HOOD-LONG PRAIRIE ROAD SEC. MT. HOOD HIGHWAY HOOD RIVER COUNTY PART 1 OF 2 PARTS DRG. NO. 9B-30-4

OREGON STATE HIGHWAY DIVISION

Located Line

# MT. HOOD-LONG PRAIRIE ROAD SEC.

## MT. HOOD HIGHWAY

HOOD RIVER COUNTY

Scale: 1 inch = 100 feet

APRIL, 1988

REVISED NOV., 1988  
MAY, 1989  
NOV., 1990  
DEC., 1991  
APRIL, 1992  
MAY, 1992  
SEPT., 1992  
FEB., 1993  
MARCH, 1993  
JULY, 1993  
NOV., 1999 AJA

BEARINGS BASED ON AN OREGON STATE HIGHWAY DIVISION SURVEY. SEE DRG. NO. 9B-2-11, DATED MAY, 1967 .

ASSUMED COORDINATES

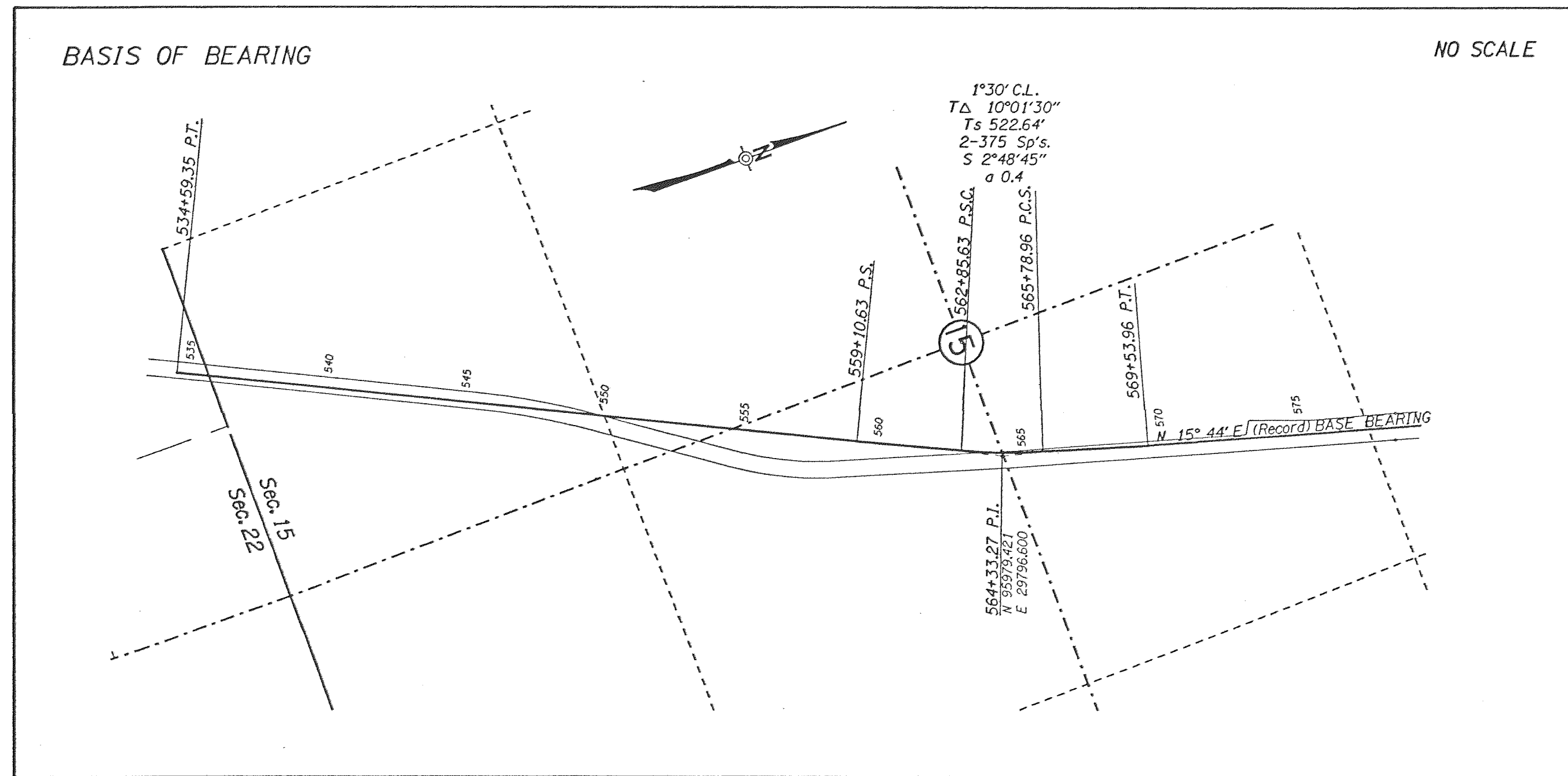
DRG. NO. 9B-30-4

PART 1 OF 2 PARTS

THIS DRAWING WAS PREPARED FROM AN OREGON STATE HIGHWAY DIVISION SURVEY. THE SURVEY TRANSIT NOTES ARE RETAINED IN THE FILES AS FIELD BOOK NUMBER 3101.

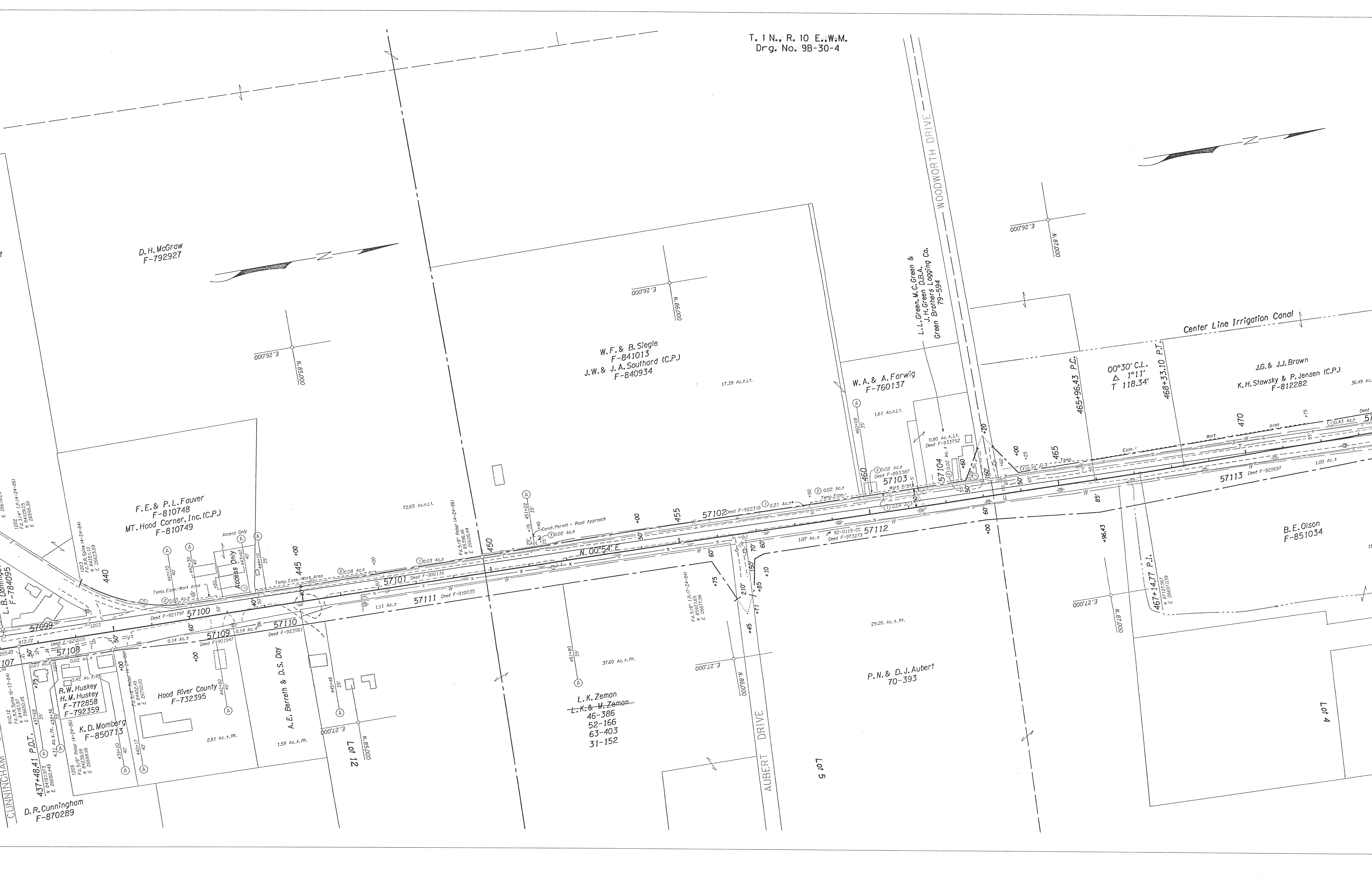
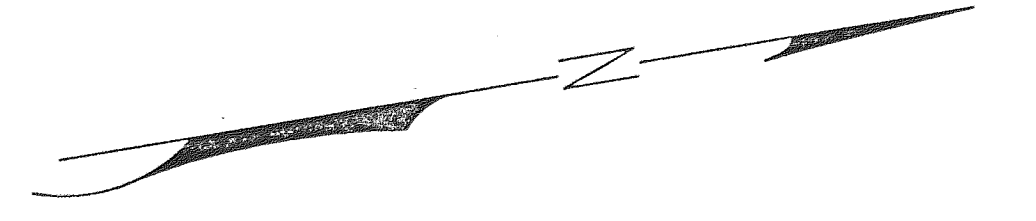
C:\usr\Projects\tobechecked\mhlp87.dgn

23-NOV-1999



SEE MAPS  
8B-17-19  
9B-2-11

SEE MAP 2B-17-13



D.H. McGraw  
F-792927

W.F. & B. Siegle  
F-841013  
J.W. & J.A. Southard (C.P.)  
F-840934

W.A. & A. Farwig  
F-760137

F.E. & P.L. Fauver  
F-810748  
MT. Hood Corner, Inc. (C.P.)  
F-810749

L.L. Green, M.C. Green &  
J.H. Green, D.B.A.  
Green Brothers Logging Co.  
79-594

J.G. & J.J. Brown  
K.H. Stowsky & P. Jensen (C.P.)  
F-812282

B.E. Olson  
F-851034

P.N. & D.J. Aubert  
70-393

L.K. Zeman  
L.K. & M. Zeman  
46-386  
52-166  
63-403  
31-152

D.R. Cunningham  
F-870289

K.D. Momborg  
F-850713

R.W. Huskey  
H.M. Huskey  
F-772858  
F-792359

Hood River County  
F-732395

A.E. Berreth & D.S. Day

Lot 12

Lot 5

Lot 4



T. 1 N., R. 10 E., W.M.  
Drg. No. 9B-30-4

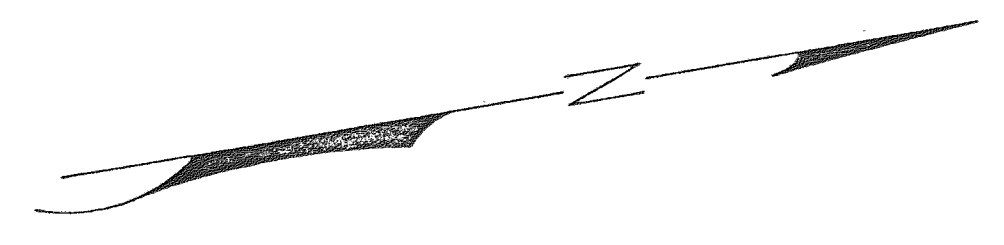


Irrigation Canal

LEASURE DRIVE



2°30' C.R.  
TA 40°57'30"  
Ts 1107.53'  
2-500' Sp's  
S 6°15'  
a 0.5



Fd. Brass Cap (7-25-84)  
1/4 Sec. Cor.  
N 87°56'12"  
E 25°12'12"

941  
Fd. Stone (3-18-86)  
W/ "x" Chisled On Top  
Sec. Cor.  
N 88°03'32"  
E 26°05'47"

628  
Fd. 5/8" I.R. 18-23-84  
W/ Alum Cap  
N 90°28'63"  
E 26°52'74"

629  
Fd. 5/8" I.R. 18-23-84  
W/ Alum Cap  
N 90°73'81"  
E 26°52'56"

1040  
Fd. 1 1/4" I.P. (4-22-86)  
Thought To Be Witness Pipe To  
1/4 Cor. Betw. Secs. 21 & 22  
N 90°49'59"  
E 26°68'73"

V. Lat  
F-720



MT. HOOD-LONG PRAIRIE  
 MT. HOOD HIGHWAY  
 HOOD RIVER COUNTY  
 LOCATED LINE  
 SCALE: 1"=100'  
 PART 1 OF 2 PARTS  
 DRG. NO. 9B-30-4

SEE MAP 9B-30-5

MT. HOOD-LONG PRAIRIE ROAD SEC. MT. HOOD HIGHWAY HOOD RIVER COUNTY LOCATED LINE SCALE: 1"=100' PART 1 OF 5 PARTS DRG. NO. 9B-30-4

MT. HOOD-LONG PRAIRIE ROAD SEC.

MT. HOOD HIGHWAY

HOOD RIVER COUNTY

LOCATED LINE

SCALE: 1"=100'

PART 1 OF 2 PARTS

DRG. NO. 9B-30-4

P 9B-30-5