

Polallie Creek - Dog River Bridge
Hwy. 35 1981
Loc. Lines
Preliminary Copy

OREGON STATE HIGHWAY DIVISION
Located Line

POLALLIE CREEK - DOG RIVER SECTION

MT. HOOD HIGHWAY

HOOD RIVER COUNTY

Scale: 1 inch = 100 feet

Traced by A.L.D. May, 1981

GRID BEARINGS-NORTH ZONE

DRG. NO. 98-19-8

Note: Coordinates used on this map are on a Local Datum Plane which represents true ground distances. Bearings are Oregon State Grid North Zone. To convert LDP Coordinates to Oregon State Grid North Zone, multiply LDP Coordinates by 0.9997987.

PRELIMINARY COPY
SUBJECT TO CHANGE



3824.8430 P.I.
2. 231.8851 P.I.
6/7/82 201.54

T. 2 S., R. 10 E., W. 1.
DRG. NO. 9B-19-9

SEE 9B-9-20 FOR PRIOR RW



$7^{\circ} 02'$
 $73^{\circ} 09' 30''$
 $786.77'$
 $350' Sps.$
 $S 12^{\circ} 15'$
 $\circ 2$

1
 2
 3
 4
 5
 6
 7
 8
 9
 10
 11
 12

U.S.A.
(National Forest)

E 1726 200

890 L 8430 P.L.
 N. 84, 201.51
 E. 1725 288.11
 P.O. - cross Cap (1-14-90)
 E. 1725 288.11
 E. 1725 288.11
 E. 1725 288.11

P.O. - cross Cap (1-14-90)
 N. 84, 201.51
 E. 1725 288.11
 P.O. - cross Cap (1-14-90)
 E. 1725 288.11
 E. 1725 288.11

P.O. - cross Cap (1-14-90)
 N. 84, 201.51
 E. 1725 288.11
 P.O. - cross Cap (1-14-90)
 E. 1725 288.11
 E. 1725 288.11

P.O. - cross Cap (1-14-90)
 N. 84, 201.51
 E. 1725 288.11
 P.O. - cross Cap (1-14-90)
 E. 1725 288.11
 E. 1725 288.11

921 L 8213 P.L.
 N. 84, 201.51
 E. 1725 288.11
 P.O. - cross Cap (1-14-90)
 E. 1725 288.11
 E. 1725 288.11

896 L 6325 P.L.

$75^{\circ} 27' 23''$ W
 117
 P.O. - cross Cap (1-14-90)
 N. 84, 201.51
 E. 1725 288.11
 P.O. - cross Cap (1-14-90)
 E. 1725 288.11
 E. 1725 288.11

898 L 4052 P.S.

902 L 4052 P.S.

911 L 2621 P.O.S.

915 L 2627 P.L.

917 L 3591 P.S.

920 L 3591 P.S.C.

$117^{\circ} 43' 36''$ E

907 L 6402 P.L.

FORK

Hood

EAST

SEE 93-9-20 FOR PRIOR RW

T.1 S., R.10 E., W.M.
T.2 S., R.10 E., W.M.

3° CL.
T₂ 17° 37'
T₃ 446.22'
S 300' Sp.
S 4° 30'
0 1

4
E 1,724.000

U.S.F.
(National Forest)

920 ± 35.01 P.S.C.
923 ± 23.13 P.C.S.
926 ± 23.13 P.T.

930

935

N 9° 47' 24" W

940

945

92 - Brass Peg (1-12-61)
N. 645.576 ± 0.2
E. 1,724.000 ± 0.2

921 ± 32.13 P.L.
E 223.13 ± 0.2

EAST

FORK

HOOD

946 ± 09.39 P.S.

943 ± 09.39 P.S.C.

RIVER

R11

U.S.A.
(National Forest)

U.S.A.
(National Forest)

0
5
1
6
2
9
9
0
0
5
2
5
5
2
2
5
2
5
2

233 F. 30.85 P.I.
E. 1224.00
N. 122.00

E. 1224.00
N. 122.00

697 F. 15.10 P.I.
E. 1224.00
N. 122.00

975 F. 59.81 P.I.

972 F. 59.87 P.C.S.

964 F. 34.31 P.S.

967 F. 34.31 P.S.C.

N. 43° 25' 24" W

113° 08' 36" E

960

961 F. 02.72 P.C.S.
E. 1224.00
N. 122.00

959 F. 02.72 P.C.S.

961 F. 02.72 P.P.I.

970 F. 26.56 P.I.
E. 1224.00
N. 122.00

1° CR
T₁ 12° 56'
T₂ 763.46'
200' 5ps.
3 1°
6 0.5

Point of Beginning
E. 1224.00
N. 122.00

Point of Beginning
E. 1224.00
N. 122.00

976 F. 16.79 P.S.

978 F. 29.6 P.S.C.

975 P.C.S.

976 P.I.

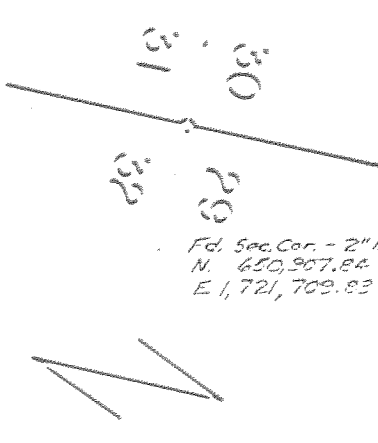
CR

EAS

T.1S., R.10E., W.1
DRG. NO. 98-19-8

SEE 98-9-20 FOR PRIOR RW

Pl. Sec. Con. - 2" Pipe w/ Brass Disc (6-12-81)
N. 859, 938, 932
E. 1,721, 700, 83



Hood River County
75-689
F 661446

1004+60.33 P.L.
N. 859, 938, 932
E. 1,721, 700, 83

N 7°42'24" W

1000

N 36°01'24" W

995

N 13°55'36" E

E 1,728, 000

992+62.18 P.C.S.

994+28.51 P.C.S.

1000+40.54 P.S.

EQUA. 998+28.51 P.F.Bk =
998+20.45 P.O.L. 1/4

1004+40.54 P.S.C.
1004+73.21 P.C.S.

1008+73.21 P.T.

5° C.P.
Tc 21'38"
Ts 413.85
S 10"
6' 1.25

Pl. Brass Con. (12-81)
N. 859, 938, 932
E. 1,728, 000

Pl. Brass Con. (12-81)
N. 859, 938, 932
E. 1,728, 644.59

Pl. Brass Con. (12-81)
N. 859, 938, 932
E. 1,728, 000

Pl. Brass Con. (12-81)
N. 859, 938, 932
E. 1,728, 000

1013+77.56 P.L.
N. 859, 938, 932
E. 1,728, 000

10
9
8
7
6
5
4
3
2
1

1
2
3
4
5
6
7
8
9
10
C.P.
20' 59.93
20' 00.00
19' 59.93

FORK

HOOD

EAST

RIVER

U.S.A.
(National Forest)

32
29

5° CL
T₂ 25° 17'
T₃ 437.03'
S 400' Sp.
S 10°
C 1.25

E. 1725.000

1013 F 10.18 P.S.C.
1014 F 06.15 P.C.S.

Hood River Box & Veneer Inc.
F 670685

1018 F 06.15 P.T.

M. E. Emry
F 700738

1022 F 08.60 P.L.
W 539' 11.00
E 1725.000

N 3° 21' 24" W

115° 06' 36" E

1013 F 11.56 P.L.
W 539' 11.00
E 1725.000

1019 F 10.83 P.S.

1019 - Eriqua 1155 (1-12-81)
W 522 745.07
E 1725 182.15
1019 - Eriqua 1155 (1-12-81)
W 522 745.07
E 1725 182.15

1022 F 10.83 P.S.C.

1023 F 18.61 P.C.S.

1026 F 18.61 P.T.

FORK

HOOD

RIVER

6° C.R.
T₂ 24° 28'
T₃ 557.77'
S 300' Sp.
S 9°
C 2

Mt. Hood Meadows Oregon, Ltd.
F 670048

4° CL
T₂ 157' 42"
T₃ 31.11'
S 200' Sp.
S 5°

D. E. Browning
F 700737

52° 50' 42" W
122'

For See Cor. of Plum Cr. Dr. 2-10.
N. 85° 04' 58"
E. 1721.831.62

T. 1 S., R. 10 E., W. 1 M.
DRG. NO. 98-19-8

SEE 88-9-21 FOR PRIOR RW

1056 + 82.1
N. 85° 16' 75"
E. 1726.523.75

Crystal Springs Water Dist.
74-1687

4" C.L.
Ta 15714.30'
Ts 31.95'
a 1/8

D.E. Browning
F. 700737

13" C.R.
Ta 42° 55'
Ts 901.45'
S 300' Sp.
S 4' 30"

Mt. Hood Meadows Oregon, Ltd.
F. 670043



19 20
30 29

1045 N 33° 51' 21" E

1050 + 81.24 P.S.C.

1047 + 81.24 P.S.

1043 + 94.95 P.T.

1040 + 94.95 P.C.S.

1038 + 84.05 P.S.C.

1037 + 84.05 P.S.

N 0° 07' 54" W

1030 + 82.09 P.S.C.

N 15° 06' 34" E

20 29

EAST

FORK

HOOD

RIVER

13" C.R.
Ta 33° 33' 15"
Ts 300' Sp.
S 4' 30"

1056 + 82.63 P1
N 85° 14' 25"
E 1726.523 75

Mt. Hood Meadows Oregon, Ltd.
F 6700-43

1062 + 11.80 P23

1176° 26' 21" E
1070

1065 + 11.80 P1, Dk's
1065 + 25.69 P21, Mh

FORK

EAST

1075

HOOD

RIVER

1083

1081 + 09.87 P5

SEE 6B-9-21
N 85° 14' 25"
E 1726.523 75

Mt. Hood Meadows Oregon, Ltd.
F 6700-43

R.
° 55'
1.45'
195.
30'

POLALLIE CREEK - DOG RIVER SECTION

MT. HOOD HIGHWAY

HOOD RIVER COUNTY

SCALE: 1" = 100'

DRG. NO. 9B-19-8

