

T.2S., R.10E., WM.
DRG. NO. 9B-19-8

SEE 8B-9-20 FOR PRIOR RW

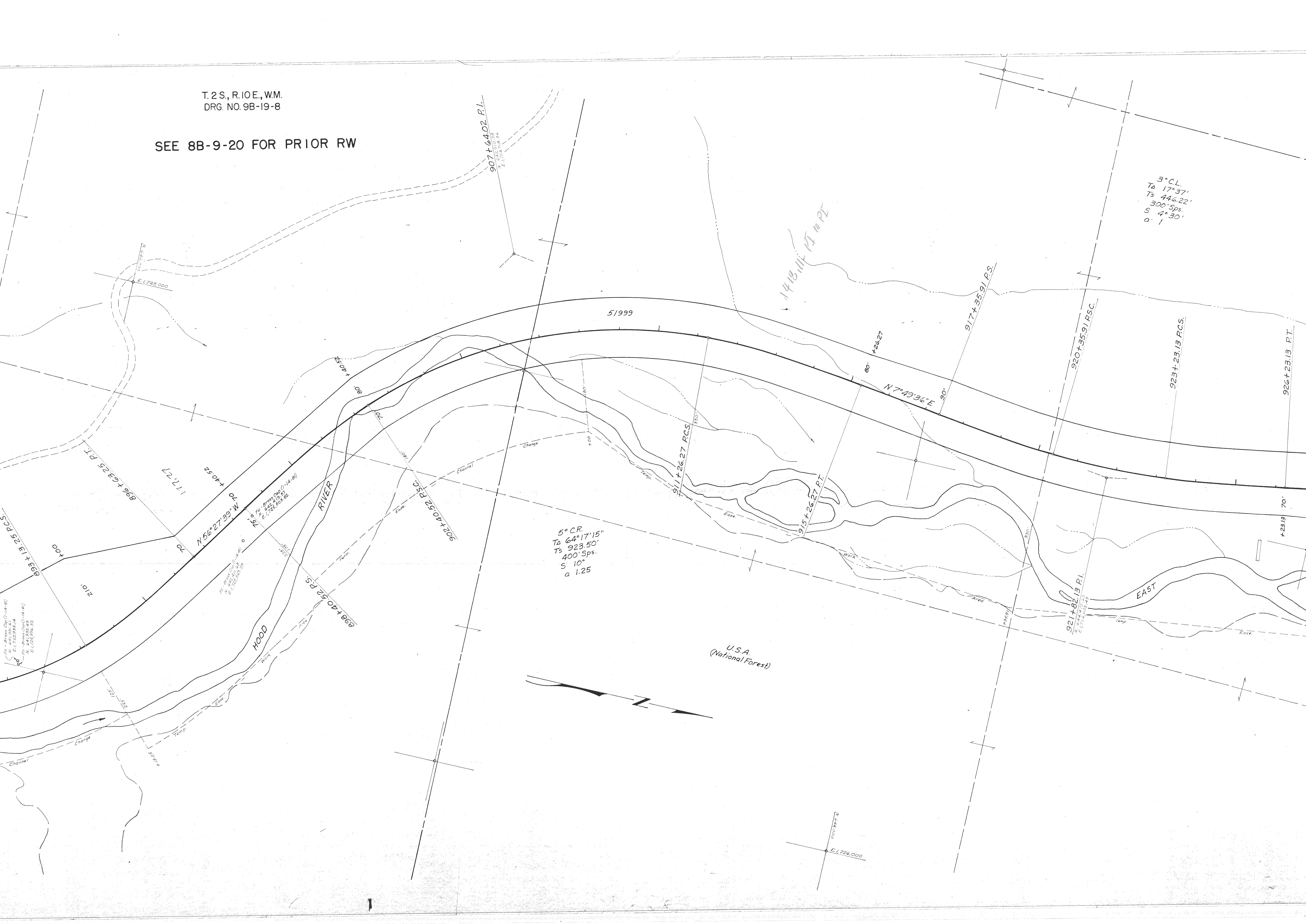
3° C.L.
Ta 17° 37'
Ts 446.22'
300' Sps.
S 4° 30'
a - 1

1418.1117 171 to P2

51999

5° C.R.
Ta 64° 17' 15"
Ts 923.50'
400' Sps.
S 10°
a 1.25

U.S.A.
(National Forest)



Pa. - Brass Cap (14-81)
N. 64° 39' 41"
E. 1725.9814
Pa. - Brass Cap (14-81)
N. 64° 39' 41"
E. 1725.9814

N 56° 27' 39" W 70'
+40.52

HOOD RIVER

902+40.52 R.S.C.
998+40.52 R.S.

907+64.02 P.L.
E. 1723.1032
E. 1723.1032

911+26.27 P.C.S.

915+26.27 P.T.

917+35.91 P.S.

920+35.91 R.S.C.

923+23.13 P.C.S.

926+23.13 P.T.

921+82.13 P.L.
E. 1724.3325
E. 1724.3325

896+63.25 P.T.

177.71

70'

75.0'

80'

70'

400'

210'

+26.27

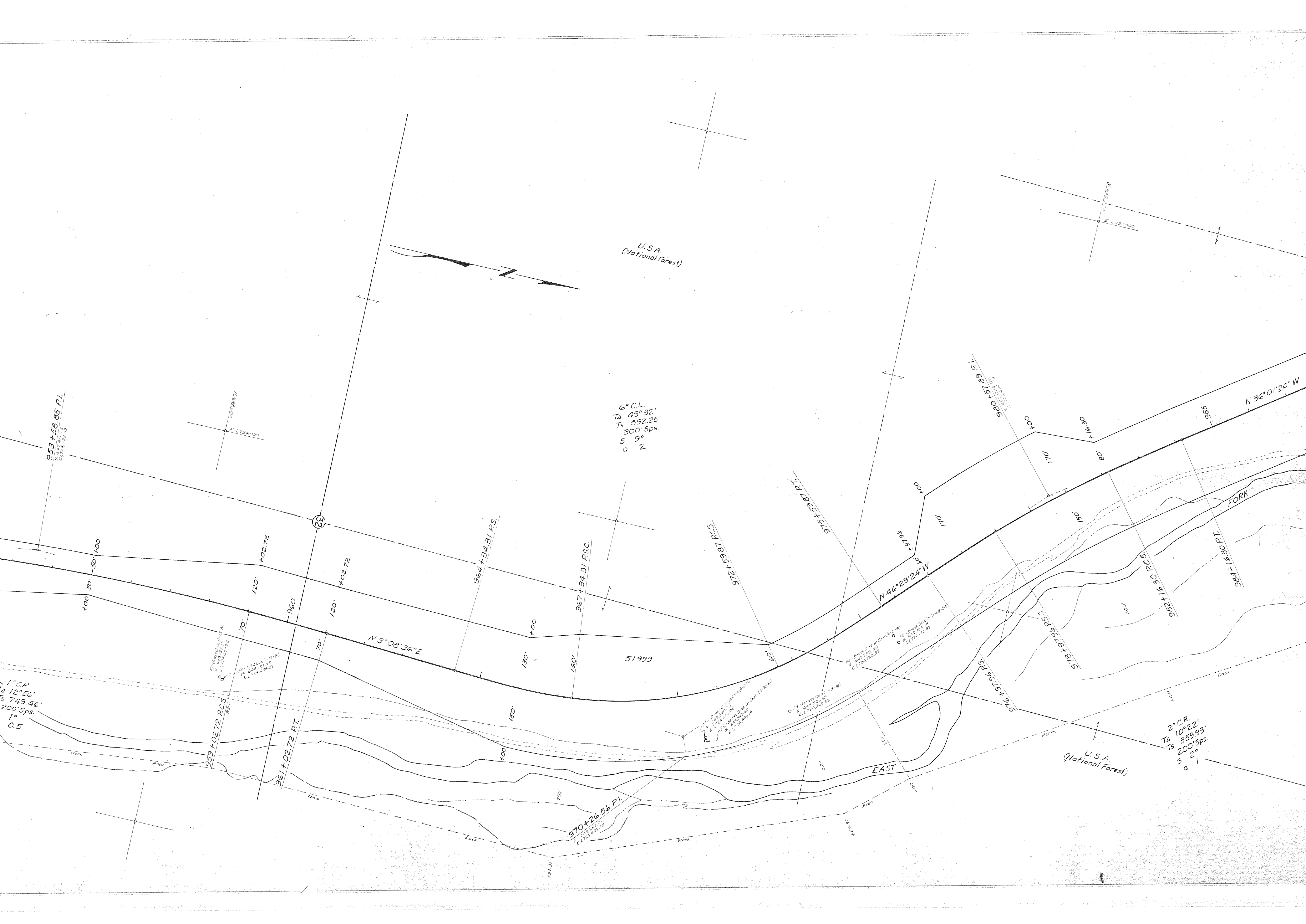
N 7° 43' 36" E

70'

+23.13

N 44° 03'

E. 1726.000



U.S.A.
(National Forest)

6° C.L.
Ta 49° 32'
Ts 592.25'
300' Sps.
S 9°
a 2

U.S.A.
(National Forest)

2° C.R.
Ta 10° 22'
Ts 359.93'
200' Sps.
S 2°
a 1

959+58.85 P.I.
Ta 12° 56'
Ts 749.46'
200' Sps.
S 1°
a 0.5

959+02.72 P.C.S.
Ta 12° 56'
Ts 749.46'
200' Sps.
S 1°
a 0.5

970+26.56 P.I.
Ta 12° 56'
Ts 749.46'
200' Sps.
S 1°
a 0.5

976+97.56 P.S.
Ta 12° 56'
Ts 749.46'
200' Sps.
S 1°
a 0.5

984+16.30 P.T.
Ta 12° 56'
Ts 749.46'
200' Sps.
S 1°
a 0.5

N 36° 01' 24" W

N 46° 23' 24" W

N 3° 08' 36" E

964+34.31 P.S.

967+34.31 P.S.C.

975+59.87 P.T.

980+57.89 P.T.

978+72.67 P.S.C.

984+16.30 P.T.

51999

EAST

FORK

1° C.R.
Ta 12° 56'
Ts 749.46'
200' Sps.
S 1°
a 0.5

959+02.72 P.C.S.
Ta 12° 56'
Ts 749.46'
200' Sps.
S 1°
a 0.5

961+02.72 P.T.

972+26.56 P.I.
Ta 12° 56'
Ts 749.46'
200' Sps.
S 1°
a 0.5

976+97.56 P.S.
Ta 12° 56'
Ts 749.46'
200' Sps.
S 1°
a 0.5

2° C.R.
Ta 10° 22'
Ts 359.93'
200' Sps.
S 2°
a 1

N 36° 01' 24" W

N 46° 23' 24" W

N 3° 08' 36" E

964+34.31 P.S.

967+34.31 P.S.C.

975+59.87 P.T.

980+57.89 P.T.

978+72.67 P.S.C.

984+16.30 P.T.

51999

EAST

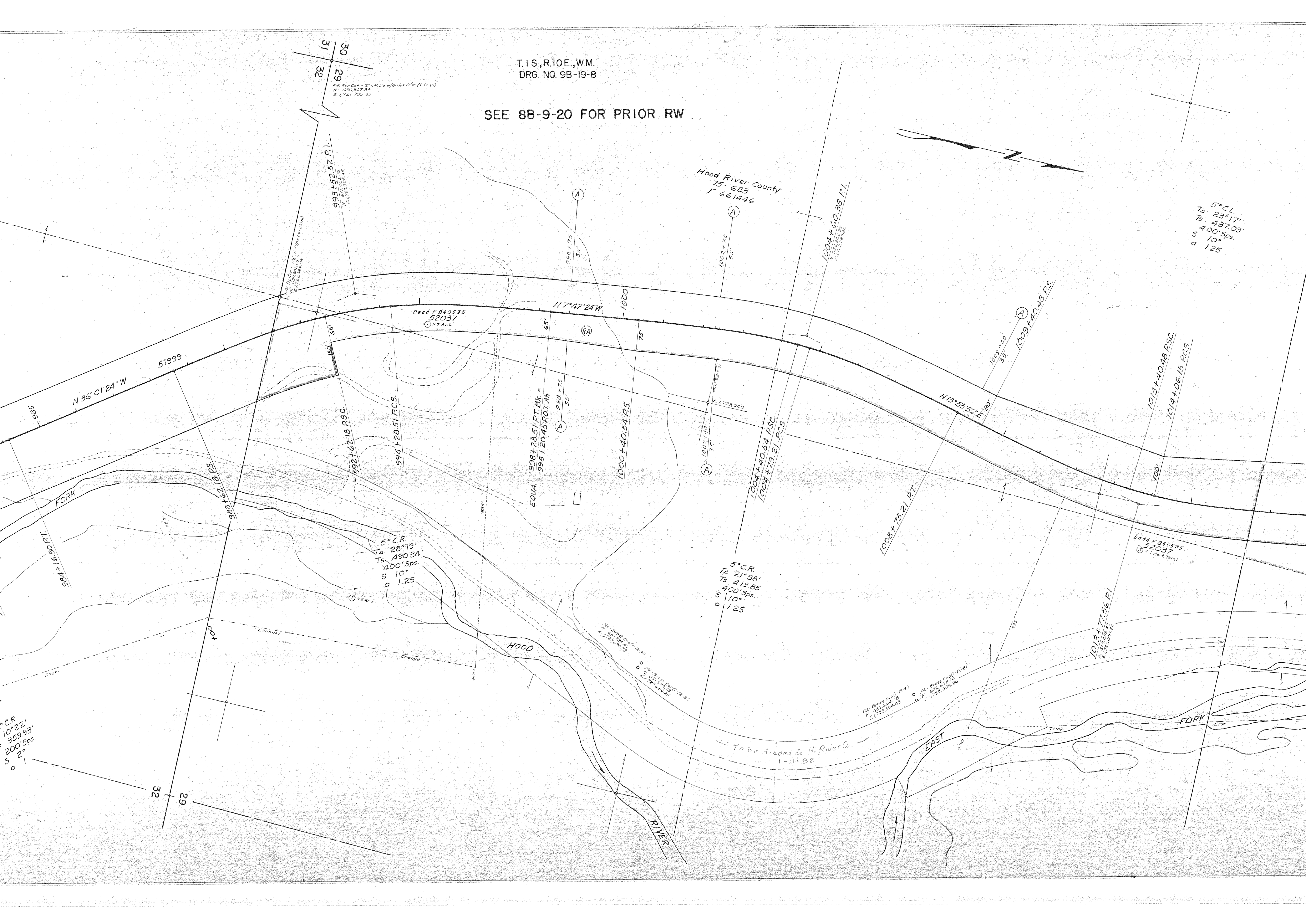
FORK

T. 1 S., R. 10 E., W.M.
DRG. NO. 9B-19-8

SEE 8B-9-20 FOR PRIOR RW



5° C.L.
T_A 23° 17'
T_S 437.09'
S 10° Sps.
a 1.25



31
30
29
32
Fid. Sec. Cor. - 2" Pipe w/ Brass Disc (5-12-8)
N. 652.307, 84
E. 1,721, 709, 83

Hood River County
75-683
F 661446

Deed F 840535
52037
① 97 Ac. ±

Deed F 840535
52037
② 4.1 Ac. ± Total

5° C.R.
T_A 28° 19'
T_S 490.34'
S 10° Sps.
a 1.25

5° C.R.
T_A 21° 38'
T_S 419.85'
S 10° Sps.
a 1.25

5° C.R.
T_A 10° 22'
T_S 359.93'
S 2° Sps.
a 1.25

Fid. Brass Cap (1-12-81)
N. 652.464, 18
E. 1,723, 594, 43

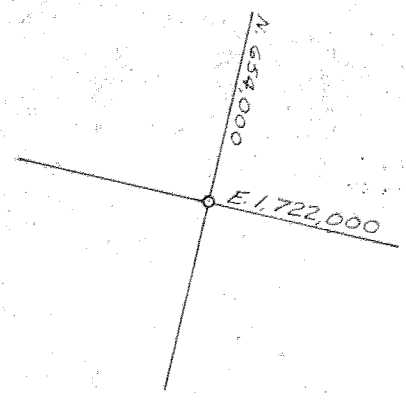
Fid. Brass Cap (1-12-81)
N. 652.475, 18
E. 1,723, 605, 36

Fid. Brass Cap (1-12-81)
N. 652.464, 18
E. 1,723, 594, 43

Fid. Brass Cap (1-12-81)
N. 652.464, 18
E. 1,723, 594, 43

To be traded to H. River Co
1-11-82

5° C.L.
T₁ 23° 17'
T₂ 437.09'
S 10° Sps.
a 1.25



Hood River Box & Veneer Inc.
F 670685

M.E. Emry
F 700733

4° C.L.
T₁ 15° 14' 30"
T₂ 300' Sps.
S 16° S
a 1 1/2

1018+06.15 RT.

1022+100
+10.83

1022+168.60 P.L.
N 83° 37' 00"
E 1722.857' 08"

N 9° 21' 24" W

Deed F-820402
52000
① 3.3 Ac. ±
② 1.6 Ac. ±

Deed F-820403
52001
① 1.5 Ac. ±
② 0.6 Ac. ±

52004

1019+10.83 P.S.

Plat - Brass Circle (1-12-81)
N 62° 34' 07"
E 1723.182.19
Plat - Brass Circle (1-12-81)
N 62° 34' 07"
E 1723.195.83

1022+10.83 P.S.

1023+18.61 P.C.S.

1026+18.61 P.T.

N 15° 06' 36" E

D.E. Browning
F 700737

1030+42.03 P.S.
1031+23.07 P.C.S.

1019+10.83 P.S.

6° C.R.
T₁ 24° 28'
T₂ 357.77'
S 300' Sps.
S 9° S
a 2

Mt. Hood Meadows Oregon, Ltd.
F 670046

17 Ac. ±
52002
Deed F-820063

N 15° 06' 36" E

EAST

Fid. Sec. Cor. Alum. Cap. (5-12-8)
N. 656, 042.92
E. 1,721, 031.45

19
20
30
29

T. I. S., R. 10 E., W. M.
DRG. NO. 9B-19-8

SEE 8B-9-21 FOR PRIOR RW

1056 + 82.69 P.I.
N. 85° 11' 4.73"
E. 1,724, 023.70

Crystal Springs Water Dist.
74-687

Deed F-820468
52004
19.4 Ac. Total

Deed F-82003
52003
Deed F-82003

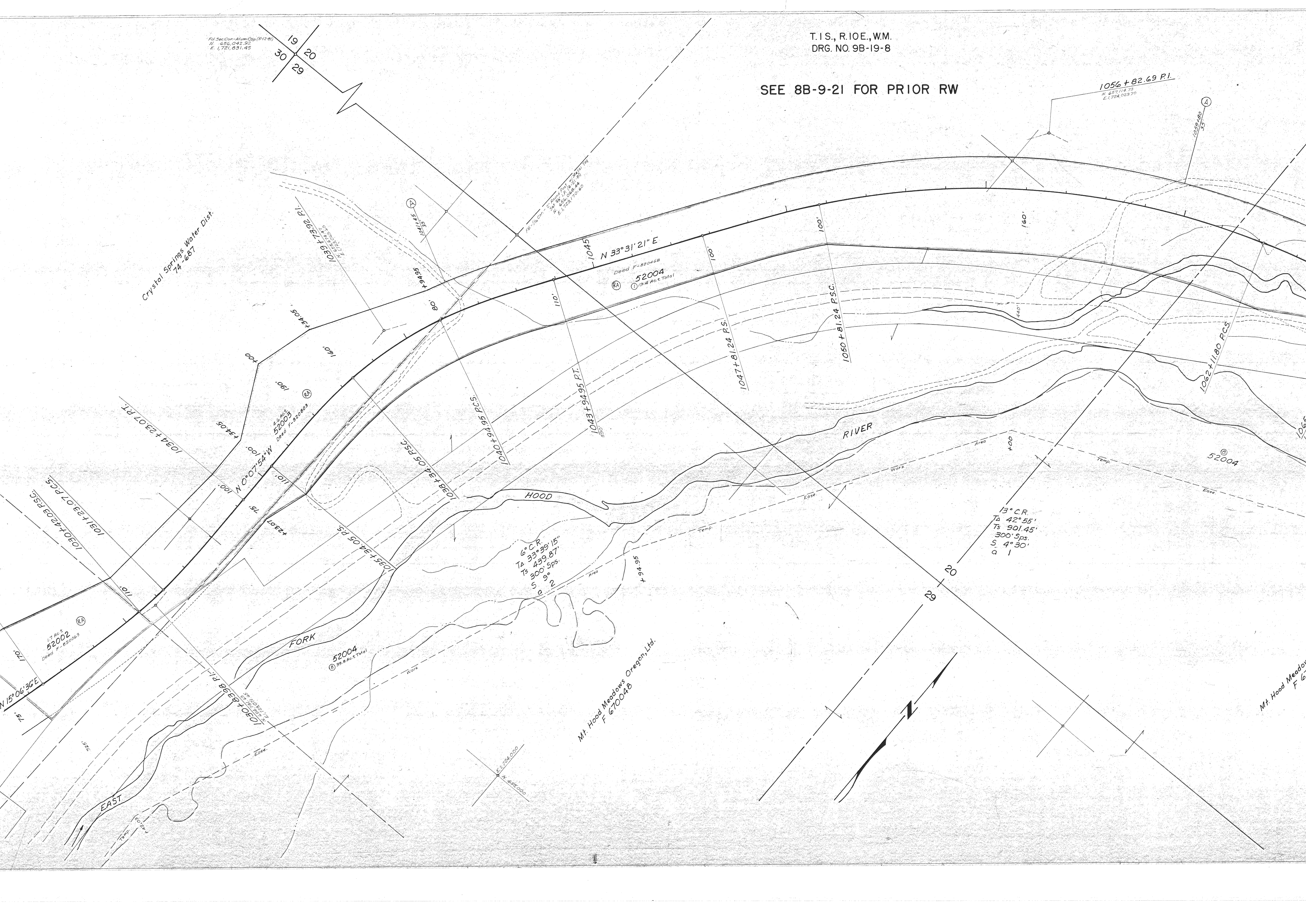
52004

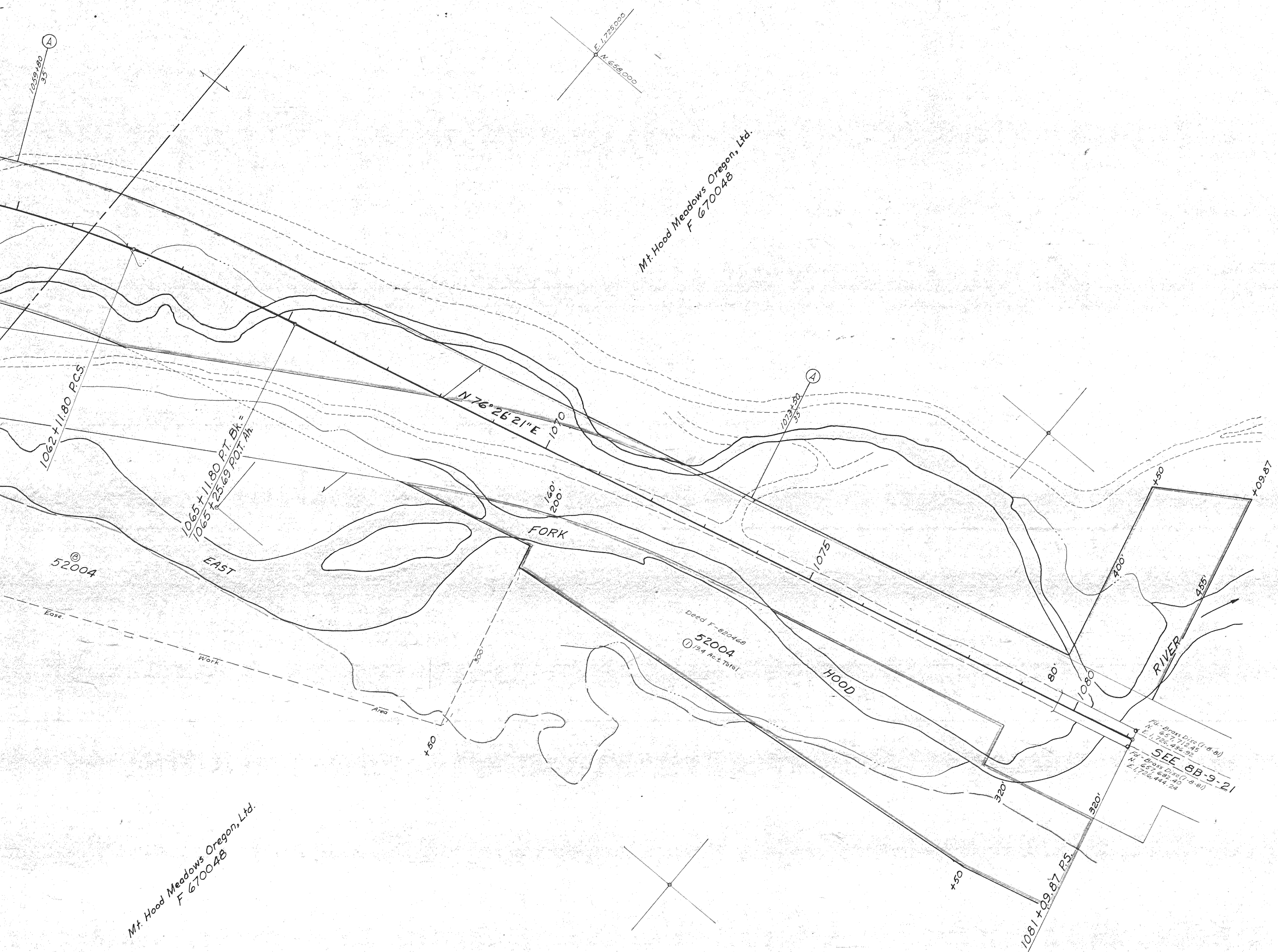
6° C.R.
T₁ 33° 39' 15"
T₂ 439.87'
S 300' Sp.
S 9' Sp.
S 9' 2

13° C.R.
T₁ 42° 55'
T₂ 901.45'
S 300' Sp.
S 4° 30'
S 1'

Mt. Hood Meadows Oregon, Ltd.
F 670048

Mt. Hood Meadows
F 670048





POLALLIE CREEK - DOG RIVER SECTION
 MT. HOOD HIGHWAY
 HOOD RIVER COUNTY
 SCALE: 1" = 100'
 DRG. NO. 9B-19-8

SEE 6B-9-21
 SEE 6B-9-21
 SEE 6B-9-21