

# HOOD RIVER BRIDGE SECTION

OREGON STATE HIGHWAY DEPARTMENT  
 Located Line

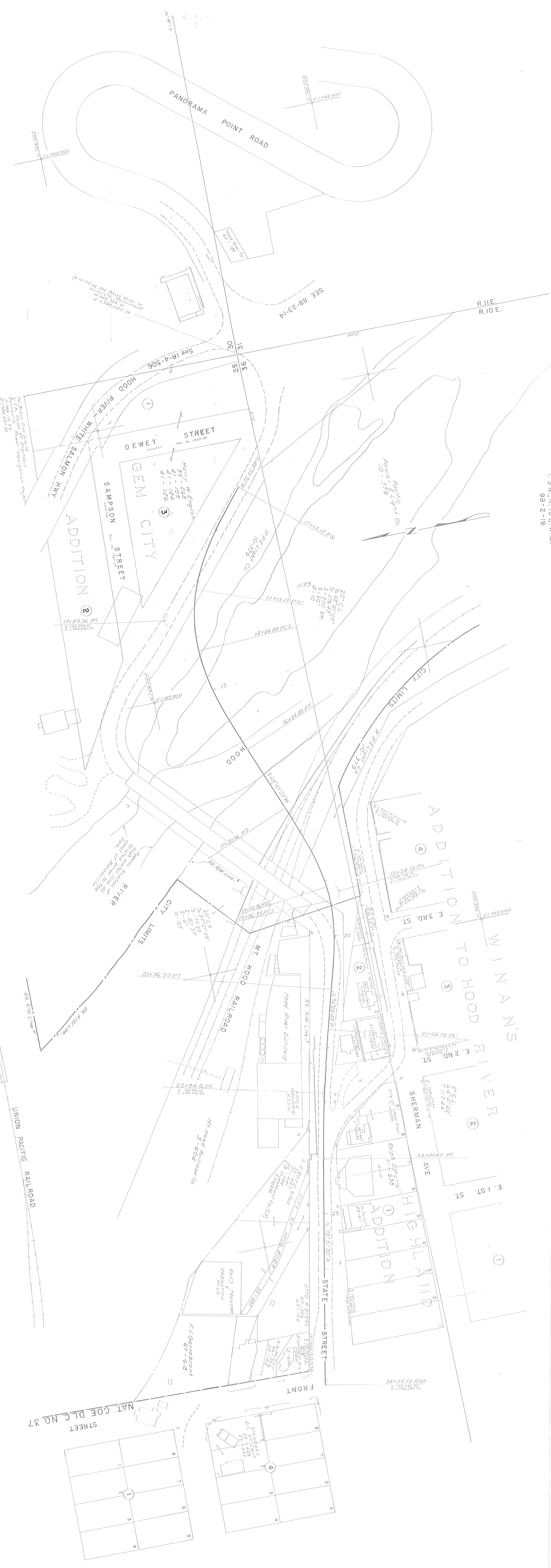
MT. HOOD HIGHWAY  
 HOOD RIVER COUNTY

Scale: 1 inch = 50 feet  
 Traced by L. J. May, 1967  
 Revised: Dec. 1979

GRID BEARINGS-NORTH ZONE  
 DRG. NO. 98-2-19

**PRELIMINARY COPY**  
 SUBJECT TO CHANGE

T. J. N. J. R. I. O. E. W. M.  
 98-2-19



HOOD RIVER BRIDGE SEC.  
 MT. HOOD HWY.  
 HOOD RIVER CO.  
 MAY, 1967  
 SCALE: 1" = 50'  
 DRG. NO. 98-2-19